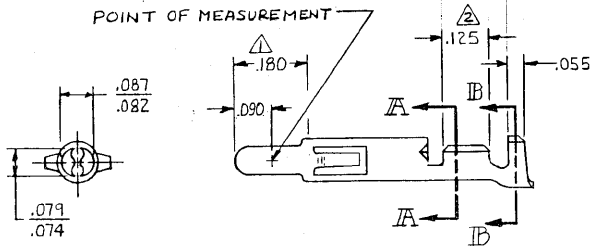
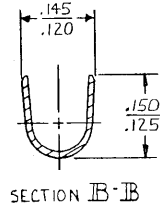
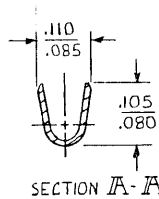
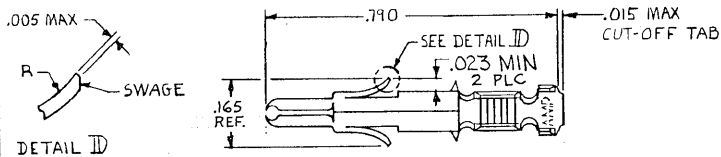


167 4
DRAWING MADE IN THIRD ANGLE PROJECTION

© COPYRIGHT 1975 BY AMP INCORPORATED, HARRISBURG, PA.
ALL INTERNATIONAL RIGHTS RESERVED. AMP INCORPORATED PRODUCTS
COVERED BY U. S. AND FOREIGN PATENTS AND/OR PATENTS PENDING.



△ PLATED WITH .000030 GOLD, OVER .000050 NICKEL UNDERPLATE.
△ PLATED INTERNALLY WITH .000030 GOLD.

		REVISIONS				
REV	DATE	ZONE	LTR	DESCRIPTION	DATE	APPROVED
✓			D	REDRAWN & UPDATED	M-6457	6-8-81 MSF/2H
✓			E	REVISED	M-7350	7/25/83 DAV/SH
✓			F	REVISED	AG 57	10/21/83 [Signature]
✓			F1	RESTORED		4/23/85 MC/RS
✓			G	REVISED PER CM-1728		9-6-88 PH/TB
			H	REV PER EC 0730-3607-91		1-7-94 RV/RS

.012 BRASS	GOLD	△	350706-7
.012 BRASS	GOLD	△△	350706-2
	PRE-TIN		350706-1
MATERIAL	FINISH		PART NO

UNLESS OTHERWISE SPECIFIED DIMENSIONS ARE IN INCHES. TOLERANCES ON: DECIMALS ±.015 ANGLES ±	CONTRACT NO	AMP AMP INCORPORATED Harrisburg, Pa.	
	DR	M. Feher 4-9-81	
	CHKD	D. Heide 6/9/81	
	APPD	[Signature]	
WIRE RANGE	APPD	NAME	SPLIT PIN, (LOOSE PIECE)
24-18 AVVG	DSGN APPD	UNIVERSAL MATE-N-LOK	
INSULATION RANGE	OTHER APPD	SIZE	B
.100 DIA MAX		CODE IDENT NO	00779
		DRAWING NO	350706
		SCALE	4-1
		SHEET	

AMP 1470-15 REV 8-79

CUSTOMER DRAWING