

4

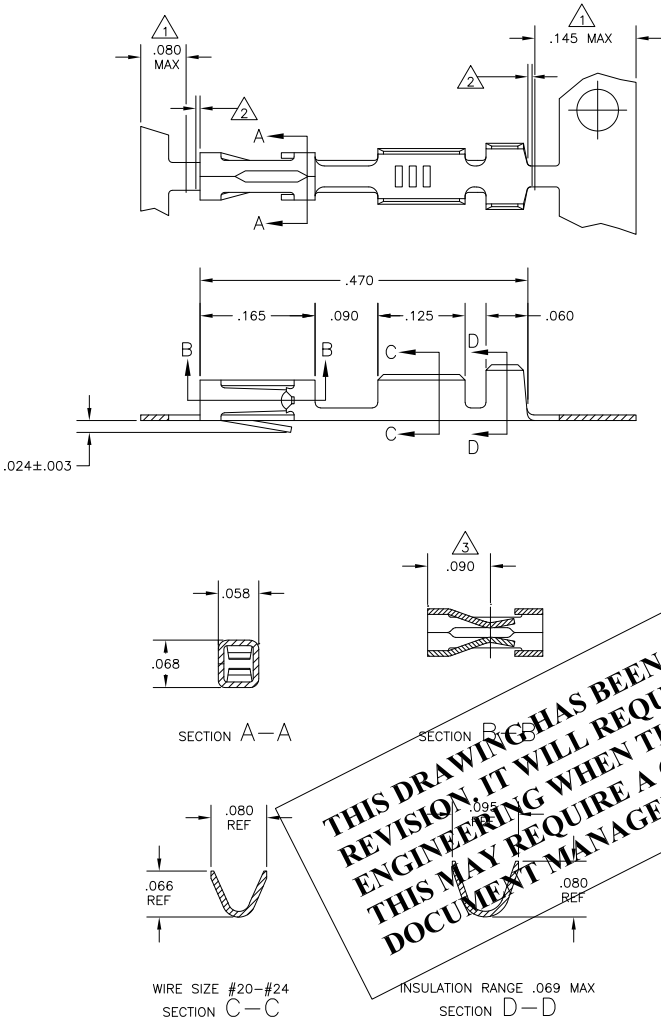
3

2

1

THIS DRAWING IS UNPUBLISHED. RELEASED FOR PUBLICATION. ALL RIGHTS RESERVED.

LOC	DIST	REVISIONS				
AD	00	P	LR	DATE	MIN	APD
		L1	REVISED PER ECO-11-004587	11MAR11	RK	HMR



- 1 PLATING IS NOT REQUIRED IN THIS AREA.
- 2 .006 MAX LOOSE PIECE CUT-OFF.
- 3 POINT OF MEASUREMENT FOR PLATING THICKNESS, INSIDE BEAMS
- 4 .000050-.000150 PREPLATED BRIGHT TIN.
- 5 .000030 GOLD IN CONTACT AREA, GOLD FLASH ON THE REMAINDER, ALL OVER .000050 NICKEL.
- 6 .000030 GOLD OVER .000050 NICKEL ENTIRE TERMINAL.
- 7 .000050 GOLD OVER .000050 NICKEL ENTIRE TERMINAL.
- 8 .000015 GOLD IN CONTACT AREA, GOLD FLASH ON THE REMAINDER, ALL OVER .000050 NICKEL.
- 9 SHEAR EDGES ARE PERMITTED TO BE UNPLATED.
- 10 .000015 GOLD IN CONTACT AREA, .000050 NICKEL ON ENTIRE TERMINAL.
- 11 OBSOLETE PART NUMBER.

THIS DRAWING HAS BEEN TRANSLATED AND REFLECTS THE PREVIOUS REVISION. IT WILL REQUIRE A COMPLETE DRAWING CHECK BY PRODUCT ENGINEERING WHEN THE NEXT ECO CHANGE IS WRITTEN - THIS MAY REQUIRE A CHANGE TO THE REVISION OF THE DOCUMENT MANAGER FOLDER AND THIS DRAWING.

2-87309-5	OBSOLETE	2-87309-4
2- -3	OBSOLETE	2- -1
2- 11 -0	1- 11 -8	9 10 1 11 -9
1- 11 -7	11 -6	8 1 -2
1- 11 -6	11 -5	7 1 11 -1
1- 11 -5	11 -4	6 1 11 -0
1- -4	-3	5 -9
1-87309-3	87309-2	87309-8
LOOSE PIECE PART NUMBER	STANDARD APPLICATOR PART NUMBER	MINI APPLICATOR PART NUMBER
	FINISH	

THIS DRAWING IS A CONTROLLED DOCUMENT.		MIN L. D. RINGLEY 28JAN85	TE Connectivity
DIMENSIONS: INCHES		CHK R. J. DAVIS 30JAN85	
OTHER DIMENSIONS: MILLIMETERS		APP'D R. J. DAVIS 30JAN85	TE CONTACT, MOD V CRIMP SNAP-IN
MATERIAL PHOS. BRONZE .008 THICK		FINISH SEE TABLE	SIZE CASE CODE DRAWING NO. A2 00779 C-87309
RESTRICTED TO		CUSTOMER DRAWING	SCALE 10:1 SHEET 1 of 1 REV L1