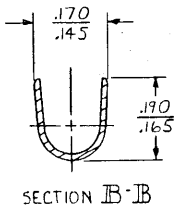
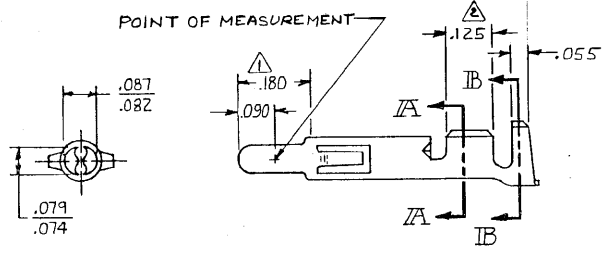
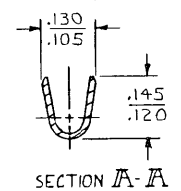
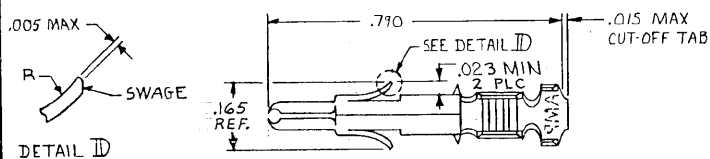


DRAWING MADE IN THIRD ANGLE PROJECTION

© COPYRIGHT 1974 BY AMP INCORPORATED, HARRISBURG, PA. ALL INTERNATIONAL RIGHTS RESERVED. AMP INCORPORATED PRODUCTS COVERED BY U. S. AND FOREIGN PATENTS AND/OR PATENTS PENDING.



		REVISIONS				
P	F	ZONE	LTR	DESCRIPTION	DATE	APPROVED
✓	✓		E	REDRAWN & UPDATED	M-6457	6-8-81 MSF/DH
✓	✓		F	REVISED	M-7350	9/25/83 DWS/DH
✓	✓		G	REVISED	AG 57	10/2/83 [Signature]
✓	✓		G1	RESTORED		4/23/85 MC/KS
✓	✓		H	REVISED PER CM-1728		9-6-88 DH JB
✓	✓		J	REV PER EC 0730-3607-93		1-7-94 RV RS

⚠️ PLATED WITH .000030 GOLD, OVER .000050 NICKEL UNDERPLATE.  
 ⚠️ PLATED INTERNALLY WITH .000030 GOLD.

MATERIAL	FINISH	PART NO
.012 BRASS	GOLD ⚠️	350705-7
.012 BRASS	GOLD ⚠️ ⚠️	350705-2
.012 BRASS	PRE-TIN	350705-1

UNLESS OTHERWISE SPECIFIED DIMENSIONS ARE IN INCHES. TOLERANCES ON: DECIMALS ±.015 ANGLES ±	CONTRACT NO	<b>AMP</b>   AMP INCORPORATED Harrisburg, Pa.	
	DR m.FEHER 4-8-81		
WIRE RANGE 20-14 AWG	CHK D.S. Heide 4/9/81	NAME SPLIT PIN, (LOOSE PIECE) UNIVERSAL MATE-N-LOK	
INSULATION RANGE .130 DIA MAX	APPR [Signature]	SIZE <b>B</b>	CODE IDENT NO <b>00779</b>
	APPD	DRAWING NO <b>350705</b>	
	DSGN APPD	SCALE 4-1	SHEET
	OTHER APPD		

AMP 1470-15 REV 8-79

**CUSTOMER DRAWING**