

4

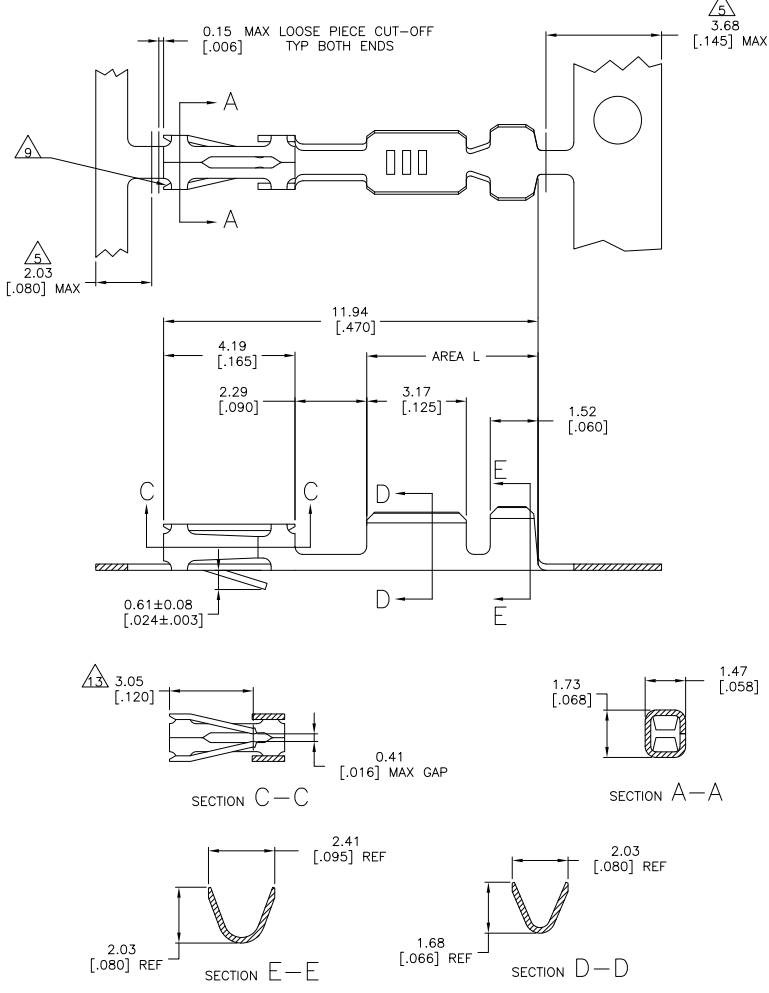
3

2

1

THIS DRAWING IS UNPUBLISHED. RELEASED FOR PUBLICATION. ALL RIGHTS RESERVED.

LOC	DIST	REVISIONS			
F	LNK	DESCRIPTION	DATE	BY	APPD
AD	00				
	U2	REVISED PER ECO-11-004587	11MAR11	RK	HMR



- 1 GOLD FLASH OVER 0.00127[.000050] NICKEL,.000762[.000030] GOLD ON CONTACT AREA.
- 2 GOLD FLASH OVER 0.00127[.000050] NICKEL,.000381[.000015] GOLD ON CONTACT AREA.
- 3 PREPLATED .00127-.00381 (.000050-.000150) BRIGHT TIN.
- 4 REELED FOR MINI APPLICATOR.
- 5 GOLD PLATING NOT REQUIRED - THIS AREA.
- 6 REELED FOR STANDARD APPLICATOR
- 7 0.000127[.000050] NICKEL OVER ENTIRE CONTACT, 0.000381[.000015] GOLD IN CONTACT AREA.
- 8 SHEARED EDGES ARE PERMITTED TO BE UNPLATED.
- 9 CUT OUTS ON BOX AT MANUFACTURER'S OPTION.
- 10 0.000381[.000015] GOLD IN CONTACT AREA. 0.00254-0.00508[.000100-.000200] BRIGHT TIN-LEAD IN AREA L, ALL OVER 0.000127[.000050] NICKEL.
- 11 0.000762[.000030] GOLD IN CONTACT AREA. 0.00254-0.00508[.000100-.000200] BRIGHT TIN-LEAD IN AREA L, ALL OVER 0.000127[.000050] NICKEL.
- 12 OBSOLETE PART NUMBER.
- 13 POINT OF MEASUREMENT FOR PLATING THICKNESS(INSIDE BEAMS).
- 14 0.000127[.000050] NICKEL OVER ENTIRE CONTACT, 0.000762[.000030] GOLD IN CONTACT AREA.
- 15 .000015 GOLD IN CONTACT AREA. .000100-.000200 BRIGHT TIN IN AREA L, ALL OVER .000050 NICKEL.
- 16 0.000762[.000030] GOLD IN CONTACT AREA. 0.00254-0.00508[.000100-.000200] MATTE TIN IN AREA L, ALL OVER 0.000127[.000050] NICKEL.
- 17 OBSOLETE PARTS: OBSOLETE CIS STREAMLININGPERD.RENAUD/D.SINISI

DESCRIPTION	FINISH	PART NUMBER
LOOSE PIECE	△△△	6-87523-9
REELED	△△△	6-87523-8
LOOSE PIECE	△△△	2-87523-4
REELED	△△△	2-87523-3
LOOSE PIECE	△△△	2-87523-2
REELED	△△△	2-87523-1
LOOSE PIECE	△△△	1-87523-9
REELED	△△△	1-87523-8
LOOSE PIECE	△△△	1-87523-6
REELED	△△△	1-87523-5
LOOSE PIECE	△△△	1-87523-4
REELED	△△△	1-87523-3
LOOSE PIECE	△△△	1-87523-0
REELED	△△△	87523-9
LOOSE PIECE	△△△	87523-8
REELED	△△△	87523-7
LOOSE PIECE	△△△	87523-6
REELED	△△△	87523-5
LOOSE PIECE	△△△	87523-4
REELED	△△△	87523-3
LOOSE PIECE	△△△	87523-2
REELED	△△△	87523-1

THIS DRAWING IS A CONTROLLED DOCUMENT.

DRM E BRANDBERG 5-5-94
CHK B STAUCH 5-5-94

APPRO B STAUCH
PRODUCT SPEC

APPLICATION SPEC: _____
WEIGHT: _____

MATERIAL CU-SN-P, ALY 521
FINISH SEE TABLE

SIZE CASE CODE DRAWING NO
A2 00779 C-87523

CUSTOMER DRAWING SCALE 10:1 SHEET 1 of 1 REV U2

WIRE SIZE #20-#24

1471-9 (3/11)