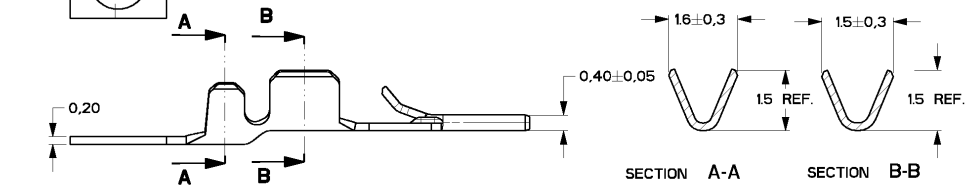
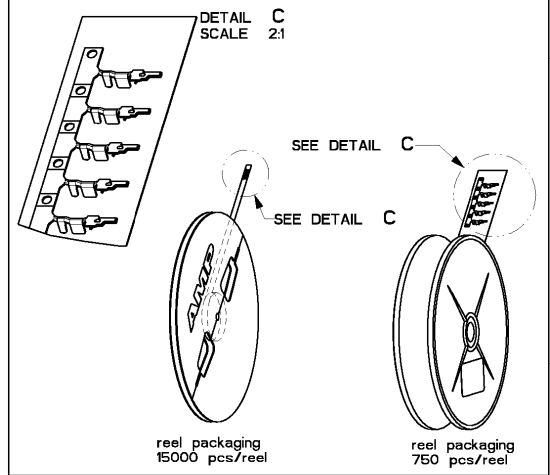
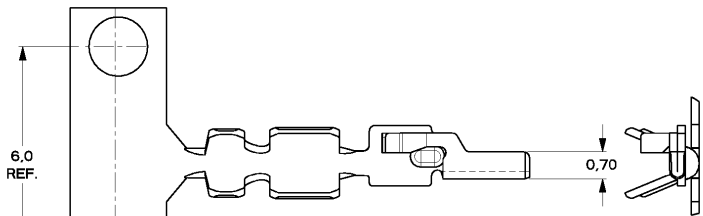
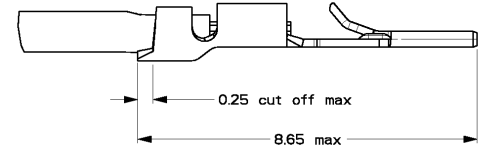
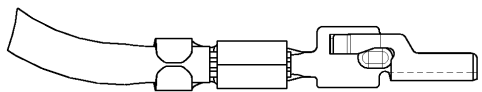


THIS DRAWING IS UNPUBLISHED. **XXXXXXXXXXXX** DATE: -  
 © COPYRIGHT - 97 by Tyco Electronics Nederland B.V. ALL RIGHTS RESERVED.

REVISIONS				
LTR	DESCRIPTION	DATE	APVD	
A	ECN 260/98	02/07/98	MG	
D	ECN 0080-00	18/04/00	MG	
E	EH01-0232-04	16 FEB 04	EL	



- NOTES:
1. WIRE RANGE 24-28 AWG
  2. INSULATION RANGE  $\varnothing$  .030-.040 (0,76-1,00 mm)
  3. FOR APPLICATOR USE ONLY
  4. FOR HANDTOOL USE ONLY
  5. FOR APPLICABLE CONNECTOR HOUSINGS SEE C-338095.



THIS DRAWING IS A CONTROLLED DOCUMENT FOR Tyco Electronics Nederland B.V. IT IS SUBJECT TO COMPANY AND CUSTOMER ENGINEERING. DRAWING CHANGES SHOULD BE CONTACTED FOR THE LATEST REVISION.

DIMENSIONS:	TOLERANCES UNLESS OTHERWISE SPECIFIED:
mm	
0 PLC	± 02
1 PLC	± 01
2 PLC	± 005
3 PLC	± 001
4 PLC	± .
ANGLES	± .°
MATERIAL	FINISH
Brass	Pre-tinplated

750	Pre-Tin	COSI-contact	Phosphorbronze	1-0338096-1
15000	Pre-Tin	COSI-Contact	Phosphorbronze	0-0338096-1
Pcs/reel	Finish	Description	Material	Part number

OWN: M.v.Amelsfoort  
 CHK: H.v.Delft  
 APVD: -  
 PRODUCT SPEC: 108-19052  
 APPLICATION SPEC: 114-19051  
 WEIGHT: -

**AMP Tyco Electronics Nederland B.V.**  
 HERTOGENBOSCH, THE NETHERLANDS

NAME: Micro-MaTch  
 COSI-CONTACT

SIZE: A3 CAGE CODE: 00779 DRAWING NO: C-338096  
 CUSTOMER DRAWING

SCALE: 10:1 SHEET: 1 OF 1 REV: E

AMP 1470-19 REV 02APRIL96

PROFESSOR DRAWING