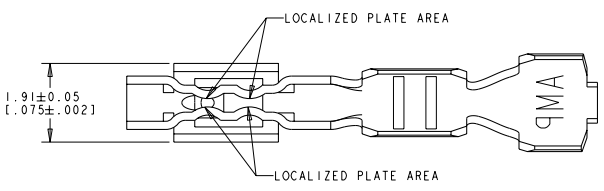
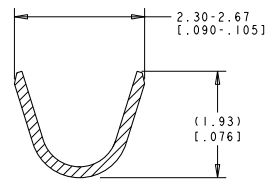
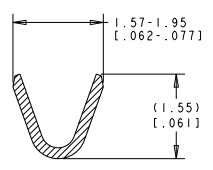
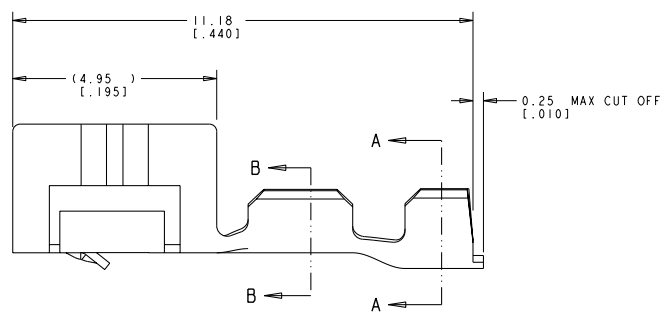


REV	DATE	BY	CHKD	APPROV
A	06APR2009	CR	CR	
B	28JUL2010	CJV	CWR	



1. WIRE RANGE .13 - .35 mm<sup>2</sup> (26 -22 AWG).
  2. INSULATION RANGE 0.89 - 1.65 [.035 - .065].
  3.  $\Delta$  0.00038 [.000015] MIN GOLD STRIPE IN LOCALIZED AREA OVER 0.00127 [.000050] MIN NICKEL OVER ENTIRE CONTACT -OR- GOLD FLASH OVER PALLADIUM-NICKEL .00038 [.000015] MIN TOTAL IN LOCALIZED AREA OVER .00127 [.000050] MIN NICKEL OVER ENTIRE CONTACT.
  4.  $\Delta$  0.00076 [.000030] MIN GOLD STRIPE IN LOCALIZED AREA OVER 0.00127 [.000050] MIN NICKEL OVER ENTIRE CONTACT. -OR- GOLD FLASH OVER PALLADIUM-NICKEL .00076 [.000030] MIN TOTAL IN LOCALIZED AREA OVER .00127 [.000050] MIN NICKEL OVER ENTIRE CONTACT.
  5. NOT FOR USE IN HOUSING PART NUMBER 770602.
- $\Delta$  CONTACTS COATED WITH ANTI-FRETTING LUBRICANT.



$\Delta$	PH BRZ	1445336-3
$\Delta$	PH BRZ	1445336-2
PRE-TIN	PH BRZ	1445336-1
FINISH	MATERIAL	PART NUMBER

**METRIC**

DATE: 21 JUNE 2001	BY: WHL/ELLS	CHKD: JELLS	APPR: JELLS	NAME: JELLS	PRODUCT SPEC: 108-1948	APPLICATION SPEC: 114-13036	WEIGHT: -	CUSTOMER DRAWING	
DIMENSIONS: mm (INCHES)		TOLERANCES UNLESS OTHERWISE SPECIFIED:		D 1 PLC ±.015		F 1 PLC ±.015		G 1 PLC ±.015	
MATERIAL: SEE TABLE		FINISH: SEE TABLE		SCALE: 5:1		SHEET 1 OF 1		REV B	