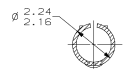
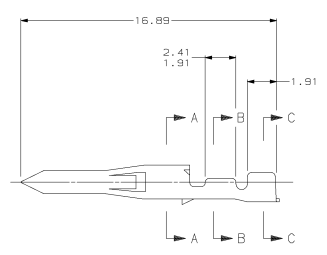
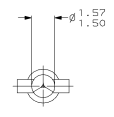
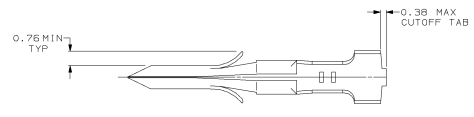
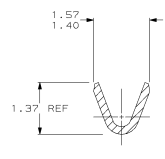


DRAWING MADE IN THIRD ANGLE PROJECTION
 THIS DRAWING IS UNPUBLISHED. RELEASED FOR PUBLICATION
 © COPYRIGHT 19 BY AMP INCORPORATED. ALL INTERNATIONAL RIGHTS RESERVED.

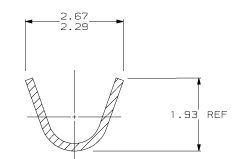
REVOLUTIONS		DATE		APPRO	
CM	53	0	7-14-93	LS	ES
CM	53	0	7-14-93	LS	ES



SECTION A-A
SCALE 10:1



SECTION B-B
SCALE 20:1



SECTION C-C
SCALE 20:1

1.91	.075		
1.57	.062		
1.52	.060		
1.50	.059	16.89	.665
1.40	.055	2.67	.105
1.37	.054	2.41	.095
0.76	.030	2.29	.090
0.38	.015	2.24	.088
0.20	.008	2.16	.085
0.19	.005	1.93	.076
MM	IN	MM	IN

CONVERSION TABLE



PRE-TIN	0.20 BRASS	1.52 MAX	0.2 - 0.5 mm ² (30-24 AWG)	794018-1
FINISH	MATERIAL	INSULATION DIAMETER	WIRE RANGE	PART NO
DO NOT SCALE PRINT. UNLESS SPECIFIED. DIMENSIONS IN mm TOLERANCES ON: 2 PLC DEC = 0.19 3 PLC DEC = 0.13 ANGLES = °	DR 7-14-93 L 3HTH GKR 2-14-93 G. SANE			AMP Incorporated Harrisburg, PA 17105-3608
MATERIAL	SEE TABLE	APPRO 7-15-93 C. SORP	PRODUCT SPEC	NAME
				.062 PIN, LOOSE PIECE, COMMERCIAL PIN AND SOCKET
FINISH	SEE TABLE	APPLICATION SPEC	SIZE	CAGE CODE
			00779	794018
		WEIGHT	SCALE	SHEET
			B:1	1 OF 1

AMP 794018-1 14 JUL 1993 14:26:05 AMP10679 <C079B0EP13333>AMP10679AJ.P531-69

CUSTOMER DRAWING