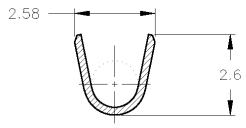
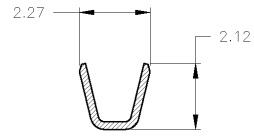


THIS DRAWING IS UNPUBLISHED. RELEASED FOR PUBLICATION 1998  
 BY AMP INCORPORATED ALL RIGHTS RESERVED.

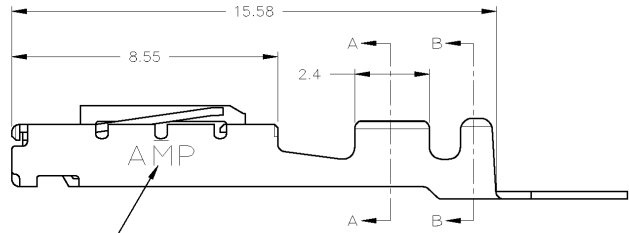
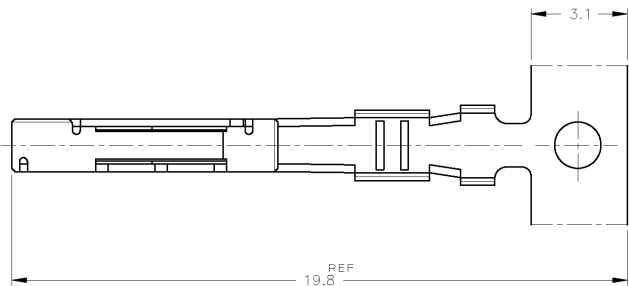
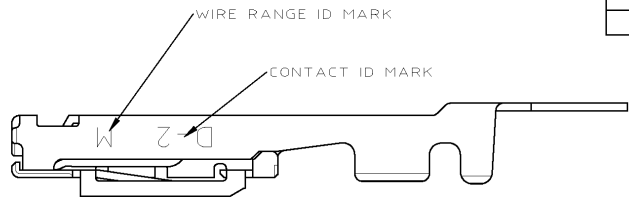
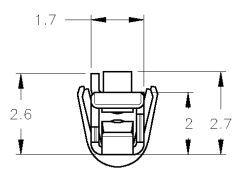
REVISIONS						
P	LTR	DESCRIPTION	ECN	DATE	DWN	APVD
	B	REVISED	ECR-10-026389	28DEC10	TT	TM



SECT B-B



SECT A-A



-1:AS SHOWN

NOTES

- FINISH (CONTACT AREA): 0.38μm MIN GOLD PLATING OVER Ni PLATING

<small>THIS DRAWING IS A CONTROLLED DOCUMENT FOR AMP INCORPORATED. IT IS SUBJECT TO CHANGE AND THE CONTROLLING ENGINEERING ORGANIZATION SHOULD BE CONTACTED FOR THE LATEST REVISION.</small>		DWN 7/DEC/98 <b>KIKEDA</b>	INSULATION DIA 1.3 ~ 1.9
DIMENSIONS: mm	TOLERANCES UNLESS OTHERWISE SPECIFIED: 10 - ±0.3 >10 - ±0.35 >>10 - ±0.4 ANGLE: ±3°	CHR 7/DEC/98 <b>NMATSUBARA</b>	<b>Tyco Electronics</b> Tyco Electronics Corporation Kawasaki, Japan
		APVD 7/DEC/98 <b>IHASEGAWA</b>	REC CONTACT 'M' SIZE <DYNAMIC D-2 SERIES>
MATERIAL (COPPER ALLOY)	FINISH SEE NOTE	PRODUCT SPEC 108-5619	SIZE CAGE CODE DRAWING NO RESTRICTED TO A3 00779 C-1318105 -
		APPLICATION SPEC 114-5258	SCALE SHEET OF REV 8-1 1 OF 1 B
		CUSTOMER DRAWING	

AMP1470-19 REV 10/93