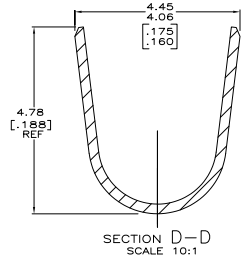
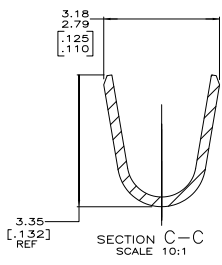
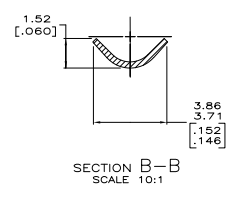
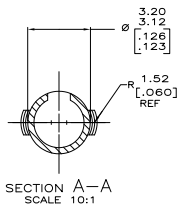
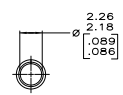
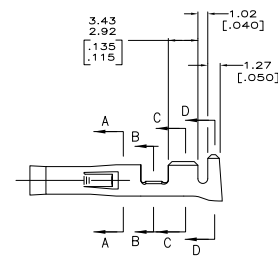


- 1. 0.00127 [0.00050] NICKEL PLATE WITH 0.00076 [0.00030] GOLD PLATE ON INSIDE OF RECEPTACLE.
- 2. WIRE RANGE: 0.5-2mm<sup>2</sup> (20-14 AWG).
- 3. INSULATION RANGE: 3.56 [1.40] MAX. DIA.
- 4. DIMENSIONS IN BRACKETS ARE IN INCHES.



PRE-TIN	0.25 [0.010] PHOS BRZ	770144-6
△	0.25 [0.010] BRASS	770144-5
PRE-TIN	0.25 [0.010] BRASS	770144-1
FINISH	MATERIAL	PART NO

**METRIC**

THIS DRAWING IS A CONTROLLED DOCUMENT. TYS ELECTRONICS CORPORATION, Harrisburg, PA 17105-3608

UNLESS OTHERWISE SPECIFIED:	UNLESS OTHERWISE SPECIFIED:	UNLESS OTHERWISE SPECIFIED:
1. DIMENSIONS ARE IN INCHES	2. DIMENSIONS ARE IN MILLIMETERS	3. DIMENSIONS ARE IN MILLIMETERS
4. DIMENSIONS ARE IN MILLIMETERS	5. DIMENSIONS ARE IN MILLIMETERS	6. DIMENSIONS ARE IN MILLIMETERS
7. DIMENSIONS ARE IN MILLIMETERS	8. DIMENSIONS ARE IN MILLIMETERS	9. DIMENSIONS ARE IN MILLIMETERS
10. DIMENSIONS ARE IN MILLIMETERS	11. DIMENSIONS ARE IN MILLIMETERS	12. DIMENSIONS ARE IN MILLIMETERS

DATE: 08/07/08  
 DRAWING NO: A100779  
 CUSTOMER DRAWING