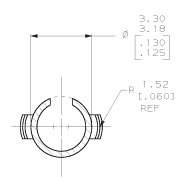
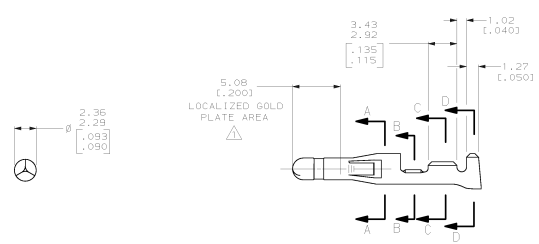
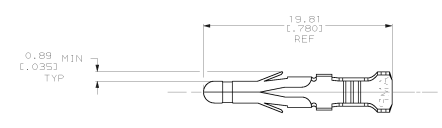
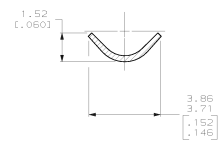


REV. NO.		DATE		APPROVED	
CM	53				
D		REV PER EC 0618-0103-98		8-11-98	

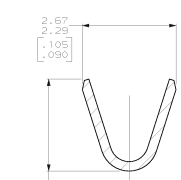
- 1. 0.00076 [.000090] MIN GOLD IN LOCALIZED GOLD PLATE AREA OVER 0.00127 [.000050] MIN NICKEL.
- 2. WIRE RANGE: 0.3 - 0.84mm² (24-18 AWG).
- 3. INSULATION RANGE: 2.78 [.110] MAX. DIA.
- 4. DIMENSIONS IN BRACKETS ARE IN INCHES.



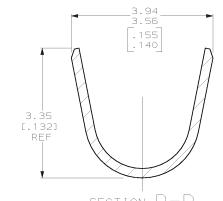
SECTION A-A
SCALE 10:1



SECTION B-B
SCALE 10:1



SECTION C-C
SCALE 10:1



SECTION D-D
SCALE 10:1



FINISH	MATERIAL	PART NO.
PRE-TIN	0.25 [.010] BRASS	770147-5
	0.25 [.010] BRASS	770147-1

DO NOT SCALE PRINT. UNLESS SPECIFIED DIMENSIONS IN mm (INCHES) TOLERANCES IN μm 3 PL DEC # = MICLES # =	DR 11-3-93 R. VESTAL CHR 11-3-93 R. ZAHN APPD 11-3-93 C. CASH APPD 11-3-93 C. CASH PRODCT SPEC =	AMP Incorporated Harrisburg, PA 17105-3608 PIN, .093, LOOSE PIECE, COMMERCIAL PIN AND SOCKET
FINISH SEE TABLE	APPLICATION SPEC -	SIZE D 00779
SCALE SEE TABLE	SCALE 5:1	DRAWING NO G=770147

CUSTOMER DRAWING