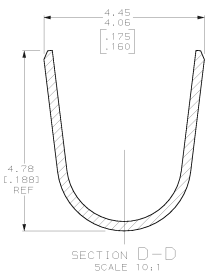
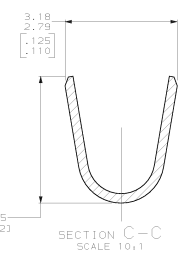
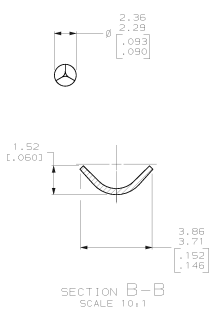
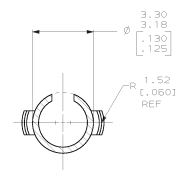
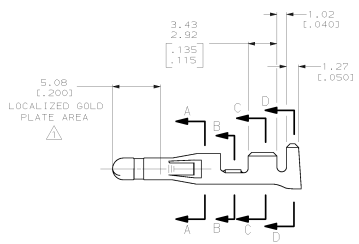
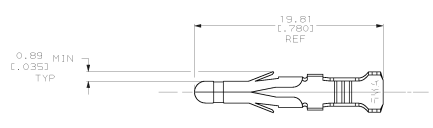


REV. NO.		DATE		APPROVED	
CM	53				
D		REV PER EC 0618-0103-98		E-11-98	

- 1 0.00076 [.000090] MIN GOLD IN LOCALIZED GOLD PLATE AREA OVER 0.00127 [.000050] MIN NICKEL.
- 2 WIRE RANGE: 0.5-2mm² (20-14 AWG).
- 3 INSULATION RANGE: 3.56 [.140] MAX. DIA.
- 4 DIMENSIONS IN BRACKETS ARE IN INCHES.



FINISH	MATERIAL	PART NO.
PRE-TIN	0.25 [.010] BRASS	770145-5
	0.25 [.010] BRASS	770145-1

DO NOT SCALE PRINT. UNLESS SPECIFIED DIMENSIONS IN MM (INCHES) TOLERANCES IN μ P L/C DEC # 0.131,090 S P/L DEC # ANGLES # °	DR 11-2-93 S. VESTAL CHK 11-2-93 R. SAINE APPD 11-2-93 C. CASH APPD 11-2-93 C. CASH PRODUT SPEC -	AMP AMP INCORPORATED Harrisburg, PA 17105 PIN, .093, LOOSE PIECE, COMMERCIAL PIN AND SOCKET
SEE TABLE	APPLICATION SPEC -	SIZE D PSCR NO 00779 DRAWING NO 770145
SEE TABLE	RETURN -	SCALE 5:1 SHEET 1 OF 1

