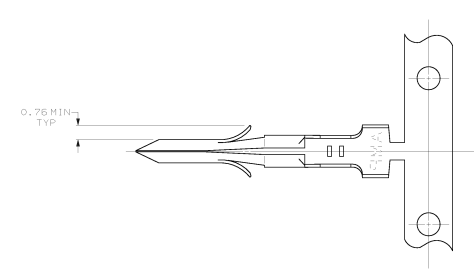
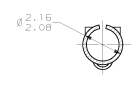
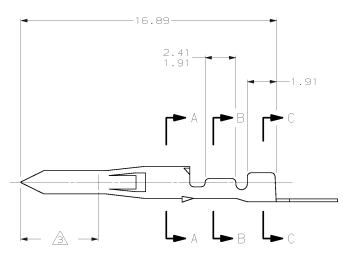
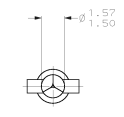


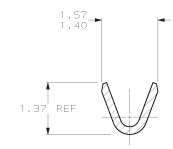
REV	DATE	DESCRIPTION	APP'D
CM 53		N REV PER EC 0730-0019-94	+4-84 BS-2



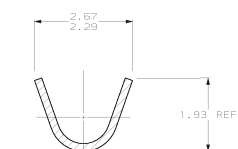
△ NICKEL OVER ENTIRE TERMINAL WITH 0.00076 THICK GOLD OVER 5.08 LENGTH.



SECTION A-A  
SCALE 10:1



SECTION B-B  
SCALE 20:1



SECTION C-C  
SCALE 20:1

IN	MIL	MM	IN
1.57	.062	-	-
1.52	.050	16.89	.625
1.50	.059	15.08	.200
1.40	.055	2.67	.105
1.37	.054	2.41	.095
0.76	.030	2.29	.090
0.20	.008	2.16	.085
0.13	.005	2.08	.082
0.00127	.000050	1.93	.076
0.00076	.000030	1.91	.075
MM	IN	MM	IN

CONVERSION TABLE

FINISH	MATERIAL	INSULATION DIAMETER	WIRE RANGE	PART NO
△	0.20 BRASS	1.52 MAX	0.5 - 0.2 mm <sup>2</sup> (30-24 AWG)	640391-S
PRE-TIN	0.20 BRASS	1.52 MAX	0.5 - 0.2 mm <sup>2</sup> (30-24 AWG)	640391-I

DO NOT SCALE PRINT. UNLESS SPECIFIED DIMENSIONS IN MM TOLERANCES IN μm P R/C DEC = 0.13 MILES = .	IN 9-12-90 B. LENS CHK 9-13-90 C. 2496 APP'D 9-27-90 C. 2496 MATERIAL SEE TABLE FINISH SEE TABLE	AMP Incorporated Harrisburg, PA 17105-3608  .062 PIN, COMMERCIAL PIN AND SOCKET  SIZE D PAGE CODE 00779 DRAWING NO 640391 SCALE B:1 SHEET 1 OF 1
--	---	--

