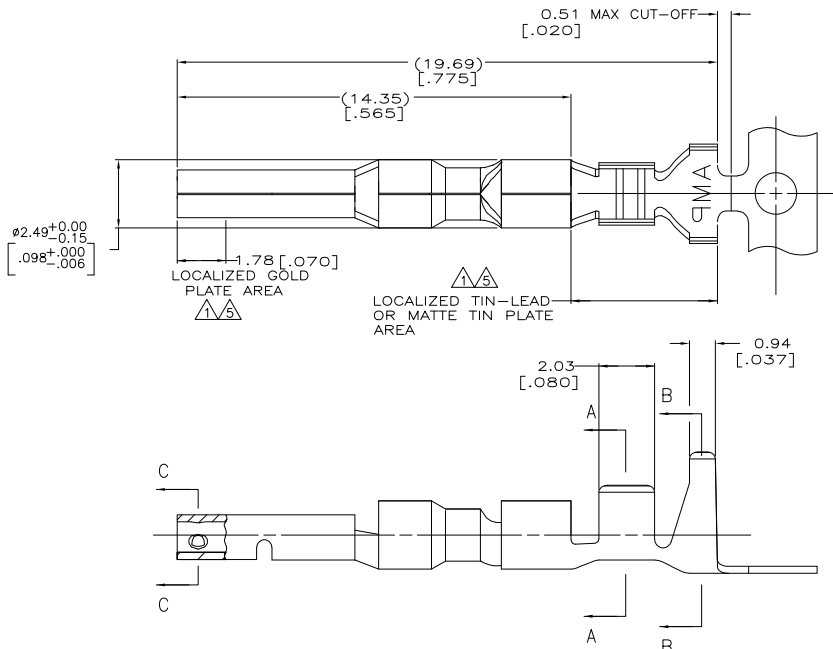
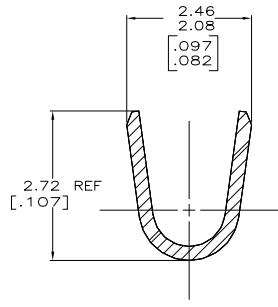


THIS DRAWING IS UNPUBLISHED. RELEASED FOR PUBLICATION.
 © COPYRIGHT BY TYCO ELECTRONICS CORPORATION. ALL RIGHTS RESERVED.

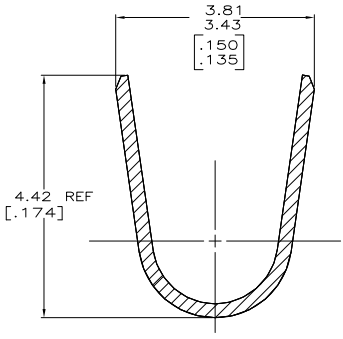
LOC		DIBT		REVISIONS			
CM	0	P	LTR	DESCRIPTION	DATE	MIN	APD
		H		REVISED PER 0638-0237-05	9/20/05	SS	CJ



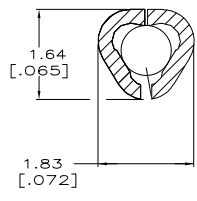
- 0.00076 [.00030] MIN GOLD IN LOCALIZED GOLD PLATE AREA AND 0.00254 [.000100] MIN BRIGHT TIN-LEAD IN LOCALIZED TIN-LEAD PLATE AREA OVER 0.0013 [.000050] MIN NICKEL.
 - WIRE RANGE: 0.3 - 0.9MM² (22-18 AWG).
 - INSULATION RANGE: 1.50-2.39 [.059-.094] DIA.
 - DIMENSIONS IN BRACKETS ARE IN INCHES.
- 0.00076 [.00030] MIN GOLD IN LOCALIZED GOLD PLATE AREA AND 0.00254 [.000100] MIN MATTE TIN IN LOCALIZED TIN PLATE AREA OVER 0.0013 [.000050] MIN NICKEL.



SECTION A-A
SCALE 20:1



SECTION B-B
SCALE 20:1



SECTION C-C
SCALE 20:1

Δ	0.25 [.010] BRASS	1-794221-0
Δ	0.25 [.010] BRASS	794221-3
PRE-TIN	0.25 [.010] BRASS	794221-1
FINISH	MATERIAL	PART NUMBER

DIMENSIONS:		REV		DATE		BY		CHECKED		DATE		BY		CHECKED	
mm [INCHES]		R_VESTAL		1-15-97		R_SWING		1-15-97		Tycos Electronics Corporation		Harrisburg, PA 17105-3608		SOCKET,	
MATERIAL		SEE TABLE		SEE TABLE		CUSTOMER DRAWING		A2 00779 C=794221		SCALE 10:1		SHEET 1 of 1		REV H	

AMP 1471-9 REV 31MAR2000

794221