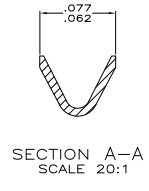
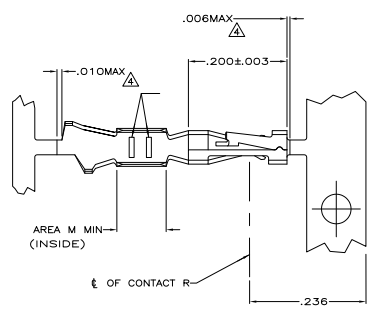


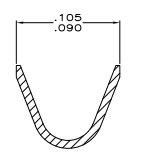
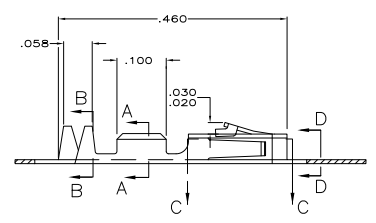
THIS DRAWING IS UNPUBLISHED
 ALL RIGHTS RESERVED

REV	DATE	DESCRIPTION	BY	CHK	APP
AD 39	11/18/11	REVISED PER ECO-11-004587	ST		

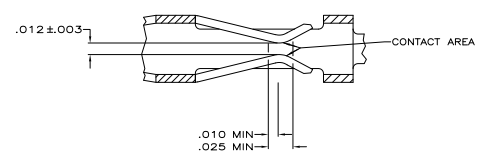


SECTION A-A
SCALE 20:1

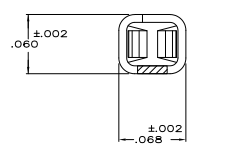
- △ .000100 MIN BRIGHT TIN-LEAD OVER .000050 MIN NICKEL ON ENTIRE CONTACT
- △ .000050 MIN NICKEL ON ENTIRE CONTACT; .000015 MIN GOLD ON CONTACT AREA; .000050 MIN BRIGHT TIN-LEAD ON AREA M.
- △ .000050 MIN NICKEL ON ENTIRE CONTACT; .000030 MIN GOLD ON CONTACT AREA; .000050 MIN BRIGHT TIN-LEAD ON AREA M.
- △ LOOSE PIECE CUT-OFF DIMENSION.
- △ OBSOLETE PART NUMBER.
- △ .000015 MIN GOLD ON CONTACT AREA, .000050 MIN TIN ON AREA M, ALL OVER .000050-.000100 NICKEL ON ENTIRE CONTACT.
- △ .000030 MIN GOLD ON CONTACT AREA, .000050 MIN TIN ON AREA M, ALL OVER .000050-.000100 NICKEL ON ENTIRE CONTACT.
- △ .000100-.000200 TIN OVER .000050 MIN NICKEL ON ENTIRE CONTACT.



SECTION B-B
INSULATION RANGE .025-.060
SCALE 20:1



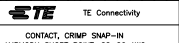
SECTION C-C
SCALE 20:1



SECTION D-D
SCALE 20:1

REVISION	DESCRIPTION	DATE	BY	CHK	APP
1-104480-7	STRIP				
1-104480-6	LOOSE PIECE				
1-104480-5	LOOSE PIECE				
1-104480-4	LOOSE PIECE				
1-104480-3	STRIP				
1-104480-2	STRIP				
1-104480-1	STRIP				
104480-9	LOOSE PIECE				
104480-8	LOOSE PIECE				
104480-7	LOOSE PIECE				
104480-6	STRIP				
104480-5	STRIP				
104480-4	STRIP				
104480-3	STRIP				
104480-2	STRIP				

REMARKS		FINISH	PART NO
THIS DRAWING IS A CONTROLLED DOCUMENT.			
DESIGNED BY	DATE	APPROVED BY	DATE
108-1472	11-18-11		
114-25038			
PHOSPHOR BRONZE	SEE TABLE		



CONTACT, CRIMP SNAP-IN
AMP/ODU SHORT POINT, 22-26 AWG

SIZE 10:1 DRAWING NO 104480
 CUSTOMER DRAWING