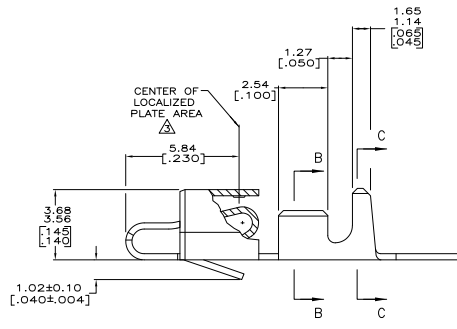
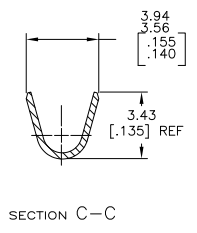
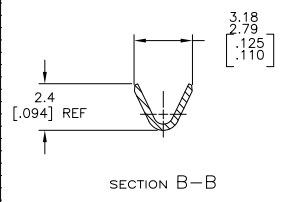


1. INSULATION RANGE: 1.09-2.79 [0.43-.110]  
 WIRE RANGE: 0.2-0.9 mm<sup>2</sup> (24-18) AWG.  
 △ 0.00203 [0.00080] MIN BRIGHT TIN-LEAD OVER  
 0.00127 [0.00050] MIN NICKEL.
- △ 0.00076 [0.00030] MIN THICK GOLD STRIPES IN  
 LOCALIZED PLATE AREA ON BEAM AND DIMPLE OVER  
 0.00127 [0.00050] MIN THICK NICKEL OVER ENTIRE  
 CONTACT.
4. DIMENSIONS IN BRACKETS ARE IN INCHES.
- △ 0.00203 [0.00080] MIN TIN OVER  
 0.00127 [0.00050] MIN NICKEL.



△	3-770476-1
△	770476-2
△	770476-1
FINISH	PART NO.



THIS DRAWING IS A CONTROLLED DOCUMENT.

UNLESS OTHERWISE SPECIFIED:	DRW. BY	DATE
1. DIMENSIONS (mm INCHES)	BLITZAKER	10/20/01
2. DIMENSIONAL TOLERANCES	DR. ELLIS	
3. DIMENSIONAL TOLERANCES	DR. ELLIS	
4. DIMENSIONAL TOLERANCES	DR. ELLIS	
5. DIMENSIONAL TOLERANCES	DR. ELLIS	
6. DIMENSIONAL TOLERANCES	DR. ELLIS	
7. DIMENSIONAL TOLERANCES	DR. ELLIS	
8. DIMENSIONAL TOLERANCES	DR. ELLIS	
9. DIMENSIONAL TOLERANCES	DR. ELLIS	
10. DIMENSIONAL TOLERANCES	DR. ELLIS	
11. DIMENSIONAL TOLERANCES	DR. ELLIS	
12. DIMENSIONAL TOLERANCES	DR. ELLIS	
13. DIMENSIONAL TOLERANCES	DR. ELLIS	
14. DIMENSIONAL TOLERANCES	DR. ELLIS	
15. DIMENSIONAL TOLERANCES	DR. ELLIS	
16. DIMENSIONAL TOLERANCES	DR. ELLIS	
17. DIMENSIONAL TOLERANCES	DR. ELLIS	
18. DIMENSIONAL TOLERANCES	DR. ELLIS	
19. DIMENSIONAL TOLERANCES	DR. ELLIS	
20. DIMENSIONAL TOLERANCES	DR. ELLIS	
21. DIMENSIONAL TOLERANCES	DR. ELLIS	
22. DIMENSIONAL TOLERANCES	DR. ELLIS	
23. DIMENSIONAL TOLERANCES	DR. ELLIS	
24. DIMENSIONAL TOLERANCES	DR. ELLIS	
25. DIMENSIONAL TOLERANCES	DR. ELLIS	
26. DIMENSIONAL TOLERANCES	DR. ELLIS	
27. DIMENSIONAL TOLERANCES	DR. ELLIS	
28. DIMENSIONAL TOLERANCES	DR. ELLIS	
29. DIMENSIONAL TOLERANCES	DR. ELLIS	
30. DIMENSIONAL TOLERANCES	DR. ELLIS	

TE Connectivity  
 RECEPTACLE, SL-156  
 SIZE: 10-11  
 DRAWING NO: 770476  
 CUSTOMER DRAWING