

4

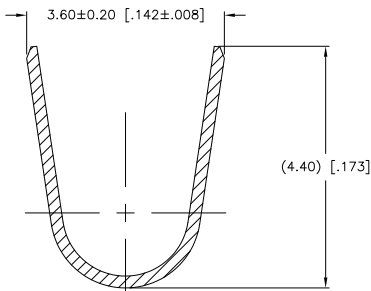
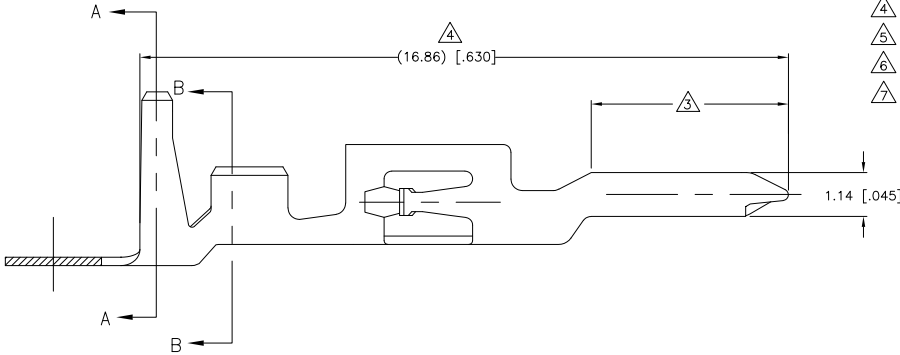
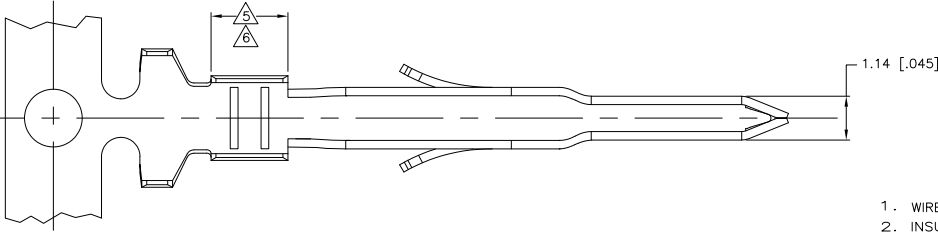
3

2

1

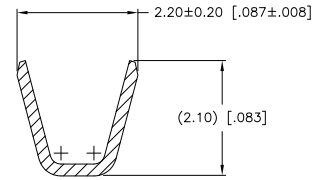
THIS DRAWING IS UNPUBLISHED. RELEASED FOR PUBLICATION  
 © COPYRIGHT BY TYCO ELECTRONICS CORPORATION. ALL RIGHTS RESERVED.

LOC	DIST	REVISIONS			
F	LNK	DESCRIPTION	DATE	BY	APP'D
D		REVISED PER 063B-1115-04	23JUN05	KW	DC
D1		REVISED PER ECO-09-023313	09OCT09	KK	AEG



SECTION A-A  
SCALE 20:1

1. WIRE RANGE: 0.30-0.87mm<sup>2</sup> (22-18 AWG).
  2. INSULATION RANGE: 1.50-2.40 DIA.
- △3 FINISH: 0.76µm MINIMUM GOLD OVER 1.27µm MINIMUM NICKEL REQUIRED
  - △4 FINISH: NICKEL BASE PLATE ON ALL SURFACES IN THIS AREA.
  - △5 FINISH: 2.54µm MINIMUM TIN-LEAD ON ALL SURFACES IN THIS AREA.
  - △6 FINISH: 2.54µm MINIMUM TIN ON ALL SURFACES IN THIS AREA.
  - △ OBSOLETE PARTS: OBSOLETE CIS STREAMLINING PER D.RENAUD/D.SINISI



SECTION B-B  
SCALE 20:1

△3	△4	△6	0.22[.009] PHOS BRONZE	794576-4
△3	△4	△5	0.22[.009] PHOS BRONZE	794576-2
△3	△4	△5	PRE-TIN 0.22[.009] PHOS BRONZE	794576-1
FINISH			MATERIAL	PART NUMBER

THIS DRAWING IS A CONTROLLED DOCUMENT.		DM S. HOOVER 07-FEB-2003	Tyco Electronics Corporation Harrisburg, Pa 17105-3608	
DIMENSIONS: mm [INCHES]		CHK D. COLEY 07-FEB-2003	NAME CONTACT, MALE, AMP-DUAC(TM)	
TOLERANCES UNLESS OTHERWISE SPECIFIED:		APP'D D. COLEY 07-FEB-2003	SIZE CASE CODE DRAWING NO	
0 PLG ±		PROOF SPEC 108-1646	A2 00779 C=794576	
1 PLG ±		APPLICATION SPEC 114-6067	RESTRICTED TO	
2 PLG ±	0.10 [004]	WEIGHT	-	
3 PLG ±		FINISH	SCALE 14:1 SHEET 1 OF 1 REV D1	
4 PLG ±		MATERIAL 0.22 [.009]PH BRZ	CUSTOMER DRAWING	
ANGLES ±		SEE TABLE		

METRIC