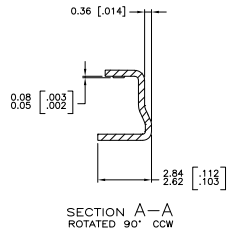
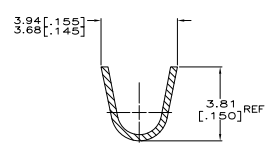
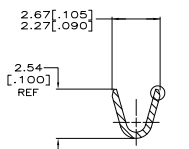
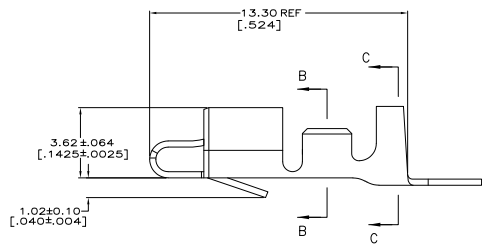
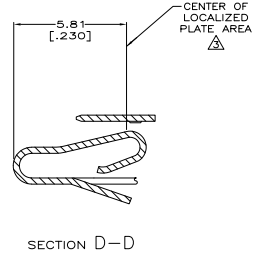
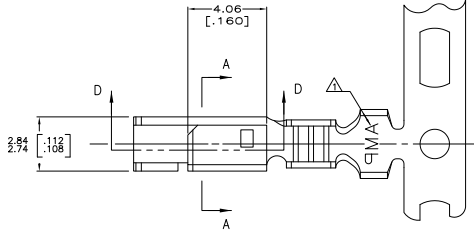


THIS DRAWING IS UNPUBLISHED
 ALL RIGHTS RESERVED

REV	DATE	DESCRIPTION	BY	CHK
0	CM	REVISED PER EDD-11-004820	11MMR11	RK HMR

- INSULATION RANGE: 1.78-2.84 [.070-.112]
 WIRE RANGE: 0.2-0.9 mm² (24-18) AWG.
- 0.00203 [.000080] MIN BRIGHT TIN-LEAD OVER
 0.00127 [.000050] MIN NICKEL.
- 0.00076 [.000030] MIN THICK GOLD STRIPES IN
 LOCALIZED PLATE AREA ON BEAM AND DIMPLE OVER
 0.00127 [.000050] MIN THICK NICKEL OVER ENTIRE
 CONTACT.
- DIMENSIONS IN BRACKETS ARE IN INCHES.
- FOR USE ONLY WITH LID STYLE HOUSING.
- 0.00203 [.000080] MIN BRIGHT TIN OVER
 0.00127 [.000050] MIN NICKEL.



POST PLATE	PRE-PLATE	MATERIAL	PART NUMBER
△	—	PHOS BRONZE	3-647406-1
—	△	PHOS BRONZE	647406-2
△	—	PHOS BRONZE	647406-1



THIS DRAWING IS A CONTROLLED DOCUMENT.		ELECTRICAL		TE Connectivity	
REV	DATE	BY	CHK	REV	DATE
0		CM		0	
UNLESS OTHERWISE SPECIFIED:		UNIT	INCHES	UNIT	MILLIMETERS
FINISH	AS SHOWN	SCALE	1:1	SCALE	1:1
TOLERANCES UNLESS OTHERWISE SPECIFIED:		FRONT VIEW	108-1049	DATE	114-1021
FRONT VIEW	108-1049	DATE	114-1021	REV	A1
DATE	114-1021	REV	A1	DATE	00779
REV	A1	DATE	00779	REV	C=647406
DATE	00779	REV	C=647406	DATE	10-1
REV	C=647406	DATE	10-1	REV	1
DATE	10-1	REV	1	DATE	01