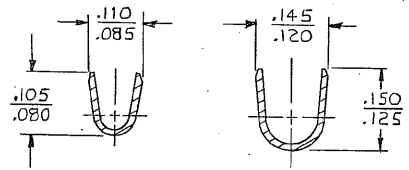
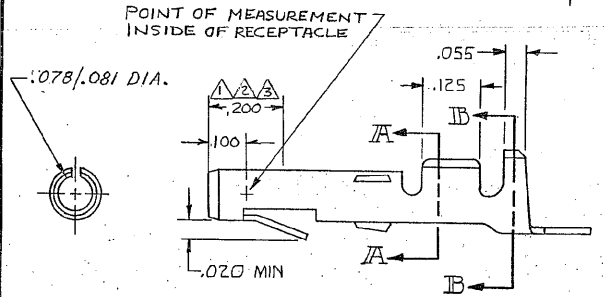
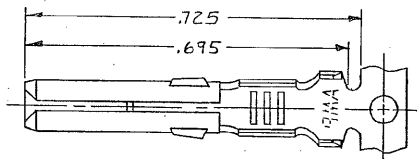


DRAWING MADE IN THIRD ANGLE PROJECTION

© COPYRIGHT 1968 BY AMP INCORPORATED, HARRISBURG, PA.  
ALL INTERNATIONAL RIGHTS RESERVED, AMP INCORPORATED PRODUCTS  
COVERED BY U. S. AND FOREIGN PATENTS AND/OR PATENTS PENDING.

LOC CM DIST 53

P	F	ZONE	LTR	DESCRIPTION	DATE	APPROVED
✓	✓		S	REDWN; RMVD FROM 61115, M-5591	11-20-77	MSF/3.H.
✓	✓		T	REV NOTE 1, ADDED NOTE 3 M-6033	10-1-80	MSF/3.H.
✓	✓		U	ADDED 1--0 PER M-6165	12-2-80	MSF/3.H.
✓	✓		V	REV. FINISH -7 PER M-6255	1-28-81	MSF/3.H.
✓	✓		W	ADDED POINT OF MEASUREMENT, M-7310	2/17/83	DAS/3.H.
✓	✓		X	ECN M-7426	6-16-83	James/gm
✓	✓		Y	REV PER ECN AG-25	10-11-83	TEB/MS
✓	✓		Y	RESTORATION	4-23-85	MC/MS
✓	✓		Z	OBS 1-1, 1-5, 1-6 PER ECN CM 473	9/4/86	ED/RS
✓	✓		AA	OBSOLETE 1-4 PER ECN CM-761	11-29-87	PHS/TB
✓	✓		AB	OBS 1--0 PER EC-0730-0127-96	6-19-97	JH/RS



- 1 NICKEL ON ENTIRE TERMINAL WITH .000030 GOLD OVER INSIDE OF MATING AREA AND WIRE BARREL.
- 2 GOLD FLASH OVER NICKEL ON ENTIRE TERMINAL WITH .000030 GOLD OVER MATING AREA.
- 3 NICKEL ON ENTIRE TERMINAL WITH .000030 GOLD OVER INSIDE OF MATING AREA.

APPLICATOR TYPE	FINISH	MATERIAL	PART NO
MINI	GOLD	.012 BRASS	61314-7
	GOLD	PH. BRZ.	-6
	GOLD	BRASS	-5
	PRE-TIN	PH. BRZ.	-4
		PH. BRZ.	-3
		BRASS	-2
MINI	PRE-TIN	.012 BRASS	61314-1

UNLESS OTHERWISE SPECIFIED DIMENSIONS ARE IN INCHES. TOLERANCES ON: DECIMALS ±.015 ANGLES ±.015		CONTRACT NO		AMP INCORPORATED Harrisburg, Pa.	
MATERIAL		DR M. FEHER 11-30-79		NAME SOCKET, COMMERCIAL MATE-N-LOK™	
SEE TABLE		CHK D.S. Heida 12/11/79		SIZE B 00779	
FINISH		APPD P. DeLoeb 12/18/79		DRAWING NO 61314	
SEE TABLE		WIRE RANGE 24-18 AWG		SCALE 5-1	
		INSULATION DIA .100 MAX		SHEET 1 OF 1	

AMP 1470-1B (7-73)

CUSTOMER DRAWING