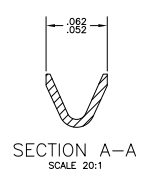
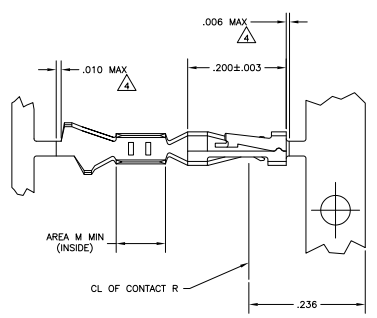
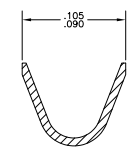
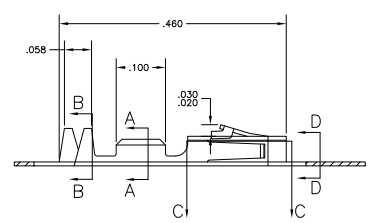


THIS DRAWING IS UNPUBLISHED
 ALL RIGHTS RESERVED

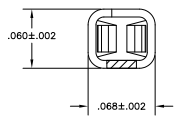
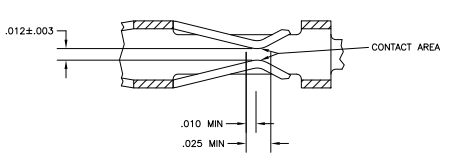
REV	DATE	DESCRIPTION	BY	CHK	APP
AD	00	REVISED PER EDD-11-004587			



SECTION A-A
SCALE 20:1



SECTION B-B
INSULATION RANGE .025-.060
SCALE 20:1



SECTION D-D
SCALE 20:1

SECTION C-C
SCALE 20:1

- △ .000100 MIN BRIGHT TIN-LEAD OVER .000050 MIN NICKEL ON ENTIRE CONTACT
- △ .000050 MIN NICKEL ON ENTIRE CONTACT; .000015 MIN GOLD ON CONTACT AREA; .000050 MIN BRIGHT TIN-LEAD ON AREA M.
- △ .000050 MIN NICKEL ON ENTIRE CONTACT; .000030 MIN GOLD ON CONTACT AREA; .000050 MIN BRIGHT TIN-LEAD ON AREA M.
- △ LOOSE PIECE CUT-OFF DIMENSION.
- △ .000015 MIN GOLD ON CONTACT AREA, .000050 MIN TIN ON AREA M, ALL OVER .000050 MIN NICKEL ON ENTIRE CONTACT.
- △ .000030 MIN GOLD ON CONTACT AREA, .000050 MIN TIN ON AREA M, ALL OVER .000050 MIN NICKEL ON ENTIRE CONTACT.
- △ .000100 MIN TIN OVER .000050 MIN NICKEL ON ENTIRE CONTACT

LOOSE PIECE	△ REF	5-104481-6
STRIP	△	5-104481-2
LOOSE PIECE	△ REF	1-104481-3
LOOSE PIECE	△ REF	1-104481-2
STRIP	△	1-104481-1
STRIP	△	1-104481-0
OBSOLETE	△	104481-9
LOOSE PIECE	△ REF	104481-8
LOOSE PIECE	△ REF	104481-7
LOOSE PIECE	△ REF	104481-6
OBSOLETE	△	104481-5
STRIP	△	104481-4
STRIP	△	104481-3
STRIP	△	104481-2
REMARKS	FINISH	PART NO

THIS DRAWING IS A CONTROLLED DOCUMENT.		DATE	BY	CHK	APP
DESIGNED	REVISIONS	108-1472			
DRAWN	DATE	114-25038			
CHECKED	DATE	100779			
APPROVED	DATE				

TE Connectivity
 CONTACT, CRIMP SNAP-IN
 AMPMODU SHORT POINT, 28-32 AWG