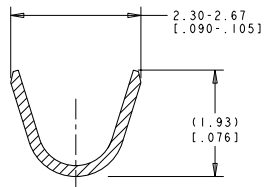
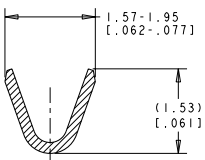
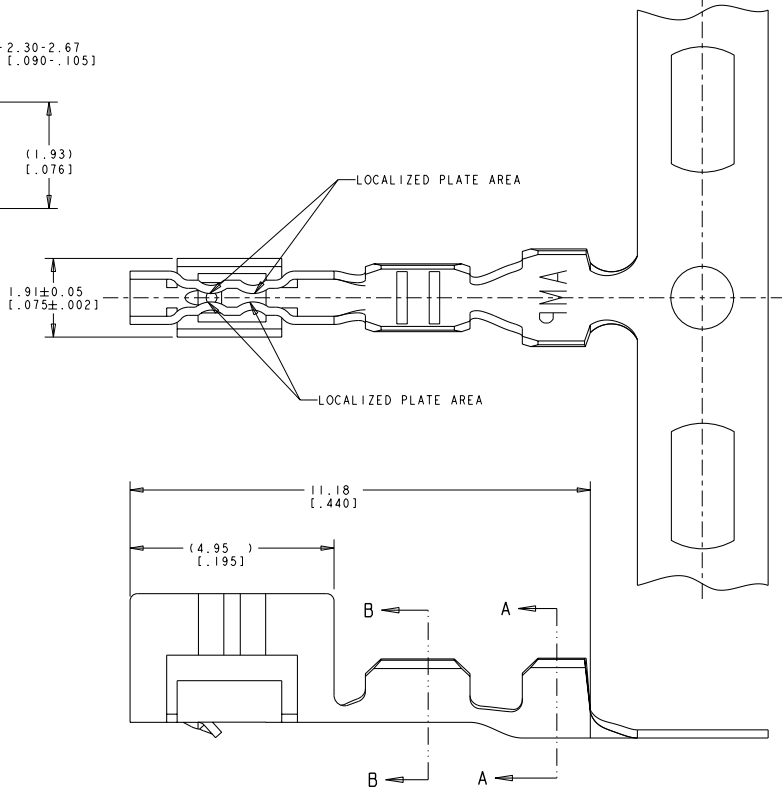


THIS DRAWING IS UNPUBLISHED. RELEASED FOR PUBLICATION BY TYCO ELECTRONICS CORPORATION. ALL RIGHTS RESERVED. COPYRIGHT 20



SECTION A-A  
SCALE 20:1



SECTION B-B  
SCALE 20:1

**METRIC**

REV	DATE	BY	CHKD	APPROV
A	06APR2009	CR	CR	
B	28JUL2010	CJV	CWR	

1. WIRE RANGE .13 - .35 mm<sup>2</sup> (26 -22 AWG).
  2. INSULATION RANGE 0.89 - 1.65 [0.035 - .065].
  3. 0.00038 [0.00015] MIN GOLD STRIPE IN LOCALIZED AREA OVER 0.00127 [0.00050] MIN NICKEL OVER ENTIRE CONTACT -OR- GOLD FLASH OVER PALLADIUM-NICKEL 0.00038 [0.00015] MIN TOTAL IN LOCALIZED AREA OVER .00127 [0.00050] MIN NICKEL OVER ENTIRE CONTACT.
  4. 0.00076 [0.00030] MIN GOLD STRIPE IN LOCALIZED AREA OVER 0.000127 [0.00050] MIN NICKEL OVER ENTIRE CONTACT -OR- GOLD FLASH OVER PALLADIUM-NICKEL .00076 [0.00030] MIN TOTAL IN LOCALIZED AREA OVER .00127 [0.00050] MIN NICKEL OVER ENTIRE CONTACT.
  5. NOT FOR USE IN HOUSING PART NUMBER 770602.
- CONTACTS COATED WITH ANTI-FRETTING LUBRICANT.

PH BRZ	1375819-3
PH BRZ	1375819-2
PRE-TIN PH BRZ	1375819-1
FINISH MATERIAL PART NUMBER	

DATE: 21 JUNE 2001	BY: WHL/TAK	CHKD: ELL/S	APPROV: ELL/S	NAME:
DIMENSIONS: mm (INCHES)				
TOLERANCES UNLESS OTHERWISE SPECIFIED:				
0 PLC	±			
1 PLC	±			
2 PLC	±	0.13 (0.005)		
3 PLC	±			
4 PLC	±			
ANGLES	±			
MATERIAL: SEE TABLE				
FINISH: SEE TABLE				
WEIGHT: -				
CUSTOMER DRAWING				
TYCO ELECTRONICS CORPORATION Harrisburg, PA 17105-3608			CONTACT, CST 100 11	
DATE: 21 JUNE 2001			SHEET: A2	
CASE CODE: 114-13036			DRAWING NO: 1375819	
RESTRICTED TO:			SCALE: 5:1	
REV: B			SHEET 1 OF 1	