

4

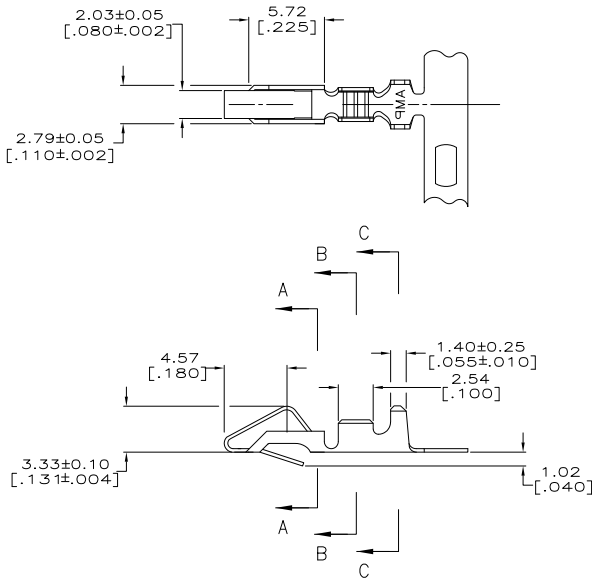
3

2

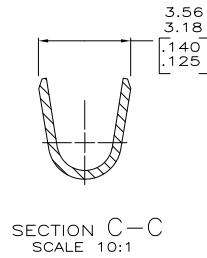
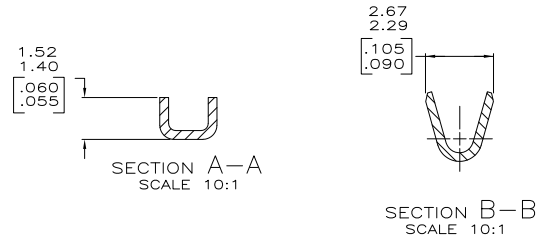
1

THIS DRAWING IS UNPUBLISHED. RELEASED FOR PUBLICATION
 © COPYRIGHT - By - ALL RIGHTS RESERVED.

LOC	DIST	REVISIONS					
CM	0	P	LTR	DESCRIPTION	DATE	BY	APD
		R2		REVISED PER ECO-11-004587	11MAR11	RK	HMR



- △ 0.00203 [.000080] MIN BRIGHT TIN-LEAD OVER
0.00127 [.000050] MIN NICKEL.
- △ 0.00330 [.000130] MAX PRE-TIN.
- △ 0.00013 [.000005] GOLD OVER 0.00127 [.000050]
MIN NICKEL ALL OVER AND 0.00076 [.000030] MIN
GOLD ON CONTACT AREA.
- 4. WIRE RANGE: 0.2-0.9mm² (24-18 AWG).
INSULATION RANGE: 2.79 [.110] DIA MAX.
- 5. DIMENSIONS IN BRACKETS ARE IN INCHES.
- △ 0.00013 [.000005] GOLD OVER 0.00127 [.000050]
MIN NICKEL ALL OVER AND 0.00038 [.000015] MIN
GOLD ON CONTACT AREA.
- △ 0.00203 [.000080] MIN BRIGHT TIN OVER
0.00127 [.000050] MIN NICKEL.



—	△	3-350980-1
—	△	350980-4
SEE 770258-1	△	350980-3
—	△	350980-2
SEE 640707-1	△	350980-1
LOOSE PIECE	FINISH	PART NO

METRIC

DIMENSIONS:		OTHER DIMENSIONS:		FINISH:	
INCHES	0.0005	0.0005	0.0005	0.0005	0.0005
MATERIAL	0.33 [.013] BRASS	FINISH	SEE TABLE		

REV	DATE	BY	CHKD	APPD	DESCRIPTION
1	11-2-92	K. SALMON			REVISED PER ECO-11-004587

TE Connectivity	RECEPTACLE, SL-156
SIZE	A2
CAGE CODE	00779
DRAWING NO	C=350980

CUSTOMER DRAWING	SCALE 5:1	SHEET 1 of 1	REV R2
------------------	-----------	--------------	--------