

4

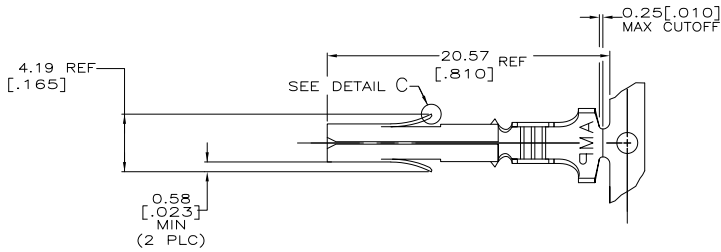
3

2

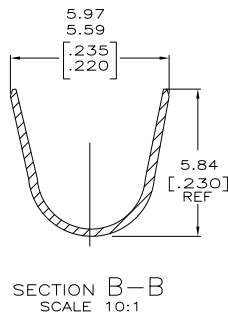
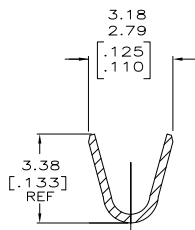
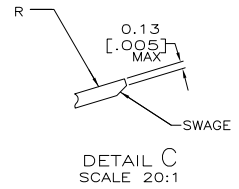
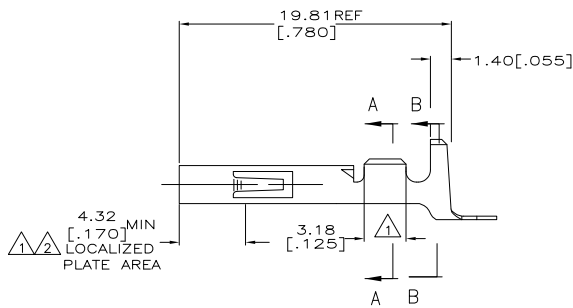
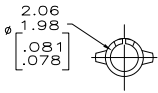
1

THIS DRAWING IS UNPUBLISHED. RELEASED FOR PUBLICATION. ALL RIGHTS RESERVED.

LOC	DIST	REVISIONS		
F	LR	DESCRIPTION	DATE	BY
CM	53	AE1	REVISED PER ECO-11-004587	11MAR11 RIK HMR



- 1 0.00076[.000030] THK GOLD OVER NICKEL ON INSIDE OF RECEPTACLE AND WIRE BARREL; REMAINDER OF CONTACT IS NICKEL PLATED.
- 2 0.00076[.000030] THK GOLD ON INSIDE OF RECEPTACLE; REMAINDER OF CONTACT IS NICKEL PLATED.
- 3 DIMENSIONS IN BRACKETS ARE IN INCHES.
- 4 PACKAGED AND SOLD IN PALLET LOADS ONLY. 44 REELS PER PALLET (110,000 CONTACTS).
- 5 LUBRICATED.



NOTE 5

350551-1	TIN	350537-1	1-350537-2
-	TIN	MAKE FROM 350537-1	1-350537-1
350551-7	GOLD	0.30 [.012] BRASS	350537-7
350551-6	GOLD	0.30 [.012] PH BZ	350537-6
350551-3	TIN	0.30 [.012] PH BZ	350537-3
350551-2	GOLD	0.30 [.012] BRASS	350537-2
350551-1	TIN	0.30 [.012] BRASS	350537-1
LOOSE PIECE (REF)	FINISH	MATERIAL	PART NO

DIMENSIONS		TOLERANCES UNLESS OTHERWISE SPECIFIED		FINISH		MATERIAL		PART NO	
mm	[INCHES]	0 PLC	±	0	±	0	±	0	±
		1 PLC	±	1	±	1	±	1	±
		2 PLC	±	2	±	2	±	2	±
		3 PLC	±	3	±	3	±	3	±
		4 PLC	±	4	±	4	±	4	±
		ANGLES	±		±		±		±
MATERIAL		FINISH		APPROVALS		DATE		DRAWING NO	
20-14 AWG		5.08[.200] DIA MAX		K. SALMON 6-11-91		6-11-91		A2 00779 C=350537	
CUSTOMER DRAWING		SCALE 1:1		SHEET 1 of 1		REV AE1		RESTRICTED TO	