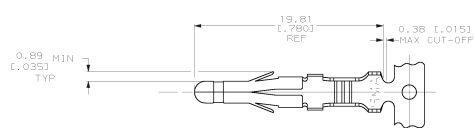
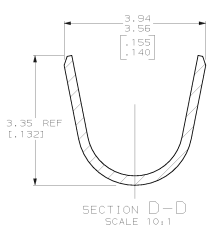
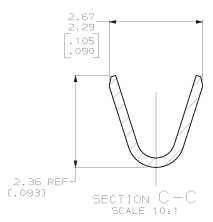
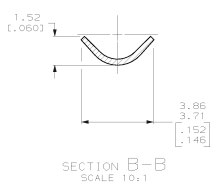
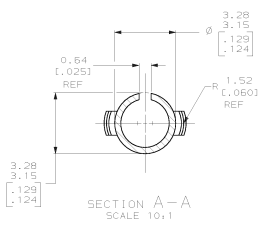
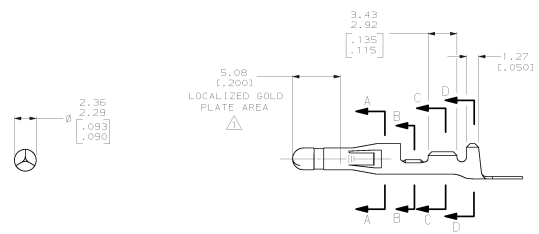


REV	CM	DATE	DESCRIPTION	DATE	APP'D
53			AD REV PER EC 0618-0103-98	8-11-98	25-25



- 1 0.00076 (.000090) MIN GOLD IN LOCALIZED GOLD PLATE AREA OVER 0.00127 (.000050) MIN NICKEL.
- 2 WIRE RANGE: 0.3 - 0.84mm² (24-18 AWG).
- 3 INSULATION RANGE: 2.78 (.110) MAX. DIA.
- 4 DIMENSIONS IN BRACKETS ARE IN INCHES.



METRIC

DO NOT SCALE PRINT. UNLESS SPECIFIED DIMENSIONS IN mm (INCHES) TOLERANCES IN μm FRACTIONS IN INCHES PLC DEC 0.13 (.005) INCHES	DR 9-8-92 N. GIBSON DR 9-3-92 R. S. BING APPD 9-8-92 C. CASH REVISIONAL APPD 9-8-92 C. CASH PRODUCT SPEC =	FINISH SEE TABLE APPLICATION SPEC = MATERIAL SEE TABLE REF PART =	FINISH PRE-TIN PRE-TIN MATERIAL 0.25 (.010) BRASS 0.25 (.010) BRASS PART NO 350418-5 350418-1 AMP Incorporated Harrisburg, PA 17105-3608 .093 PIN COMMERCIAL PIN AND SOCKET SIZE D 00779 DRAWING NO C=350418 SCALE 5:1 SHEET 1 OF 1
--	--	--	--

CUSTOMER DRAWING