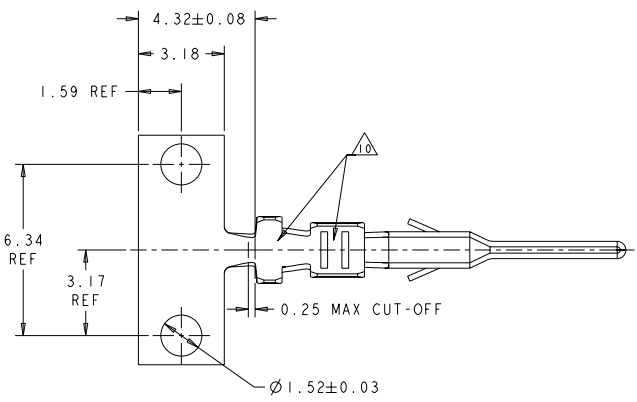
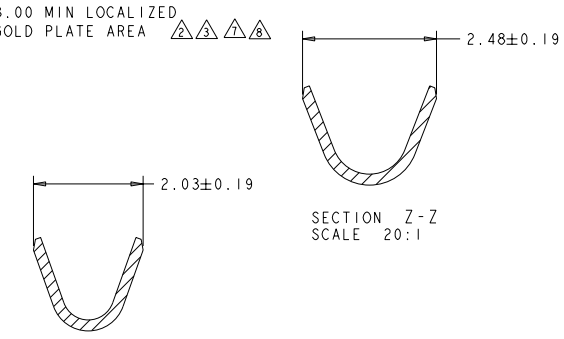
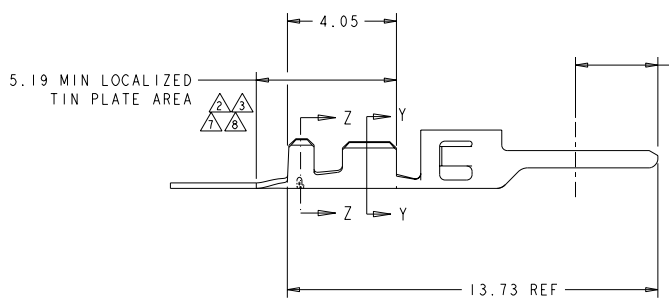


THIS DRAWING IS UNPUBLISHED. RELEASED FOR PUBLICATION BY TYCO ELECTRONICS CORPORATION. ALL RIGHTS RESERVED. COPYRIGHT 20

REV	DATE	BY	APPD
B	24 JUN 03	KW	CJ
C	24 JUN 03	KW	CJ
D	05 JAN 05	KW	CJ
D1	24 FEB 04	KW	CJ



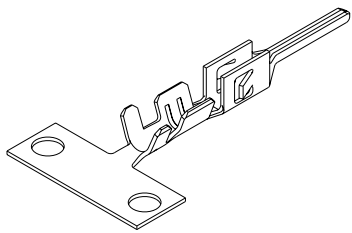
- △ 2.54 µm MIN BRIGHT TIN/LEAD ENTIRE STOCK OVER 1.27 µm MIN NICKEL ENTIRE STOCK.
- △ 0.38 µm MIN GOLD IN LOCALIZED GOLD PLATE AREA, 2.54 µm MIN BRIGHT TIN/LEAD IN LOCALIZED TIN/LEAD PLATE AREA, BOTH OVER 1.27 µm MIN NICKEL ON ENTIRE STOCK.
- △ 0.76 µm MIN GOLD IN LOCALIZED GOLD PLATE AREA, 2.54 µm MIN BRIGHT TIN/LEAD IN LOCALIZED TIN/LEAD PLATE AREA, BOTH OVER 1.27 µm MIN NICKEL ON ENTIRE STOCK.
- 4. WIRE RANGE 20-24 AWG.
- 5. INSULATION RANGE 0.89-1.52
- △ 2.54 µm MIN BRIGHT TIN ENTIRE STOCK OVER 1.27 µm MIN NICKEL ENTIRE STOCK.
- △ 0.38 µm MIN GOLD IN LOCALIZED GOLD PLATE AREA, 2.54 µm MIN BRIGHT TIN IN LOCALIZED TIN PLATE AREA, BOTH OVER 1.27 µm MIN NICKEL ON ENTIRE STOCK.
- △ 0.76 µm MIN GOLD IN LOCALIZED GOLD PLATE AREA, 2.54 µm MIN BRIGHT TIN IN LOCALIZED TIN PLATE AREA, BOTH OVER 1.27 µm MIN NICKEL ON ENTIRE STOCK.
- △ NOTE DELETED.
- △ TIN PLATING THICKNESS INSIDE WIRE AND INSULATION BARRELS TO BE 1.27 µm MIN.



FINISH	PART NUMBER
△	1-794608-2
△	1-794608-1
△	1-794608-0
△	794608-3
△	794608-2
△	794608-1

SECTION Y-Y SCALE 20:1

SECTION Z-Z SCALE 20:1



METRIC

DWN: J. RUDY 29AUG2000 CHK: W. DAVIS 29AUG2000		Tyco Electronics Harrisburg, PA 17105-3608	
DWN: W. DAVIS 29AUG2000 CHK: W. DAVIS 29AUG2000		NAME: PLUG CONTACT, CRIMP SNAP 20-24 AWG, MICRO MATE-N-LOK(TM)	
MATERIAL: 0.20 THK BRASS		SIZE: A2	CAGE CODE: 00779
DRAWING NO: 794608		SCALE: 10:1	

AMP 1471-9 REV 51MAR2000