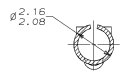
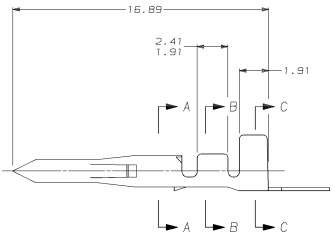
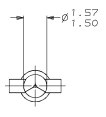
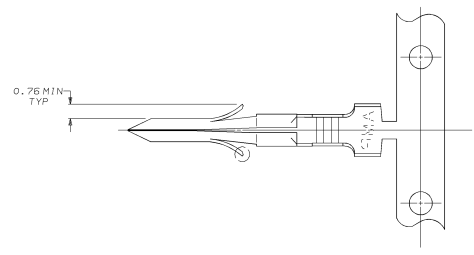
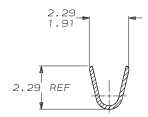


DRAWING MADE IN THIRD ANGLE PROJECTION
 THIS DRAWING IS UNPUBLISHED. RELEASED FOR PUBLICATION
 © COPYRIGHT 19 BY AMP INCORPORATED. ALL INTERNATIONAL RIGHTS RESERVED.

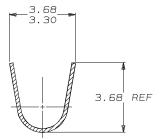
REVOLUTIONS		DATE	APPD
CM	53	B	REV PER EC 0730-0051-94



SECTION A-A
SCALE 10:1



SECTION B-B
SCALE 10:1



SECTION C-C
SCALE 10:1

MM	IN	MM	IN	MM	IN
1.57	.062	2.79	.110	-	-
1.50	.059	2.41	.095	-	-
1.27	.050	2.29	.090	-	-
0.76	.030	2.16	.085	16.89	.665
0.20	.008	2.08	.082	3.68	.145
0.13	.005	1.91	.075	3.30	.130

CONVERSION TABLE

PRE-TIN	0.20 BRASS	1.27 - 2.79	0.2 - 0.9 mm ² (24-18 AWG)	770983-1
FINISH	MATERIAL	INSULATION DIAMETER	WIRE RANGE	PART NO
DO NOT SCALE PRINT. UNLESS SPECIFIED	DR 7-13-92 K. SAKON			
DIMENSIONS IN MM	CHK 7-13-92 R. SANG			
TOLERANCES IN mm	APPD 7-16-92 C. SAKO			
2 PLE DEC # 0.13				
ANGLES # 0				
MATERIAL	APPD 7-16-92 C. SAKO			
SEE TABLE	PRODUCT SPEC			
FINISH	APPLICATION SPEC	SIZE	CAGE CODE	DRAWING NO
SEE TABLE		D	00773	770983
	WEIGHT	SCALE	B:1	SHEET 1 OF 1



AMP Incorporated
 Harrisburg, PA 17105-3608
 .062 PIN,
 COMMERCIAL PIN AND SOCKET

AMP 1763-3 REV 11-88
 28 APR 1994 11:17:45 AMP33887 <C0708>SEPT1323-AMP33887-U-0K-51

CUSTOMER DRAWING