

4

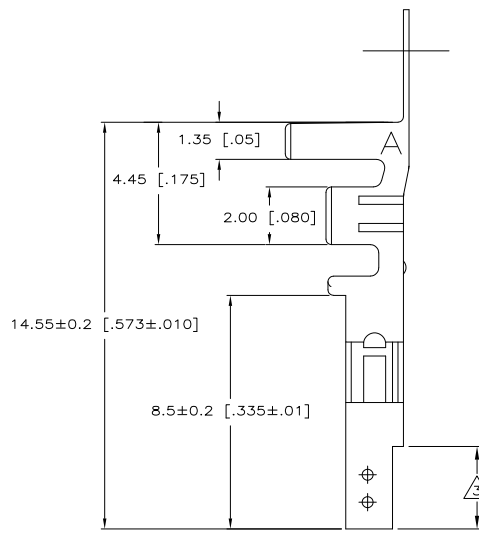
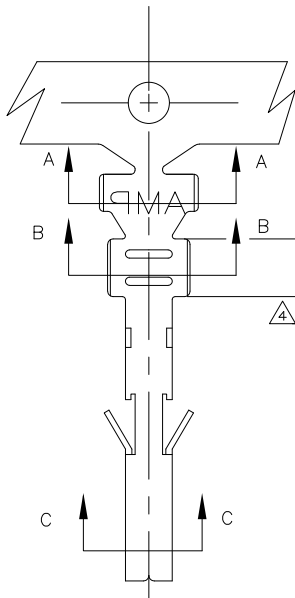
3

2

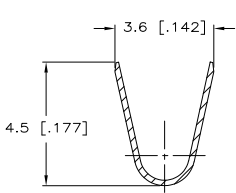
1

THIS DRAWING IS UNPUBLISHED. RELEASED FOR PUBLICATION  
 BY TYCO ELECTRONICS CORPORATION. ALL RIGHTS RESERVED.

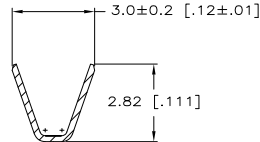
LOC	DIST	REVISIONS		DATE	BY	APP'D
		F	LR			
		C2		REVISED PER ECR-10-013247	25JUN10	HMR KR



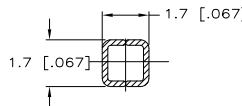
- 1 WIRE RANGE: 1.31mm<sup>2</sup> (16 AWG).
- 2 INSULATION RANGE 3.10 [.122] MAXIMUM DIAMETER
- 3 FINISH: 0.76µm MINIMUM GOLD OVER 1.27µm MINIMUM NICKEL REQUIRED ON INNER SURFACE, PERMITTED ON OUTER SURFACE.
- 4 FINISH: 2.54µm MINIMUM TIN ON ALL SURFACES IN THIS AREA.
- 5 FINISH: 2.54µm MINIMUM PRE-TIN ALL OVER.



SECTION A-A



SECTION B-B



SECTION C-C

GOLD 3/4	PHOS. BRZ.	1586055-4
PRE-TIN 5	PHOS. BRZ.	1586055-3
GOLD 3/4	BRASS	1586055-2
PRE-TIN 5	BRASS	1586055-1
FINISH:	MATERIAL:	PART NO.

# METRIC

THIS DRAWING IS A CONTROLLED DOCUMENT.		DRN S. HOOVER 15-NOV-2004	Tyco Electronics Corporation Harrisburg, PA 17105-3608	
DIMENSIONS: mm [INCHES]		CHK D. COLEY 15-NOV-2004	NAME	
TOLERANCES UNLESS OTHERWISE SPECIFIED:		APP'D D. COLEY 15-NOV-2004	PRODUCT SPEC	
0. PLC	#	APPLICATION SPEC		
1. PLC	± 0.15 [006]	SIZE CASE CODE DRAWING NO		
2. PLC	± 0.10 [004]	A2 00779 C=1586055		
3. PLC	± 0.05 [002]	RESTRICTED TO		
4. PLC	#	CUSTOMER DRAWING		
ANGLES	#	SCALE 10:1 SHEET 1 of 1 REV C2		
MATERIAL	FINISH			