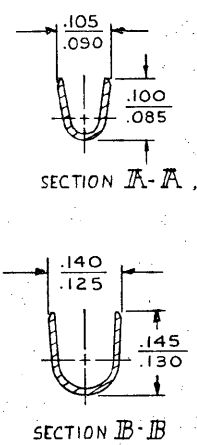
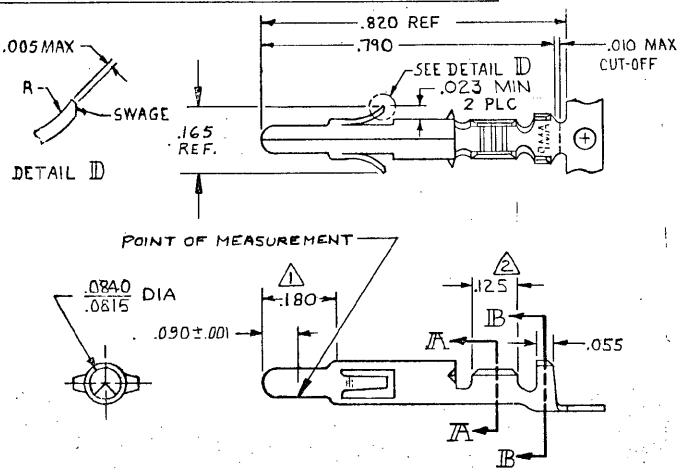


DRAWING MADE IN THIRD ANGLE PROJECTION

© COPYRIGHT 1973 BY AMP INCORPORATED, HARRISBURG, PA. ALL INTERNATIONAL RIGHTS RESERVED. AMP INCORPORATED PRODUCTS COVERED BY U. S. AND FOREIGN PATENTS AND/OR PATENTS PENDING.



⚠ PLATED WITH .000030 GOLD, OVER .000050 NICKEL UNDERPLATE.
 ⚠ PLATED INTERNALLY WITH .000030 GOLD.

		REVISIONS				
P	F	ZONE	LTR	DESCRIPTION	DATE	APPROVED
✓			P	REDRAWN W/O CHANGE	M-6457	6-5-81 MSF/DH
✓			R	REVISED	M-7350	7/27/83 PAS/DH
✓			S	REVISED	AG 57	10/20/83 BK/RS
✓			S	RESTORED		4/13/85 BK/RS
✓			T	REV PER ECN CM 115		8-6-85 CM/RS
✓			U	REVISED PER CM-1728		9-6-88 PA/TB
✓			Y	REVISED PER CM-3286		2-7-91 PK/RS
✓			W	REV PER EC 0730-3607-91		1-7-94 RV/RS
✓			Y	REV PER EC 0730-0141-94		7-26-94 RV/RS

350690-7	GOLD	⚠ .012 BRASS	350561-7
350690-3	PRE-TIN	.012 PH. BRZ.	350561-3
350690-2	GOLD	⚠ .012 BRASS	350561-2
350690-1	PRE-TIN		350561-1
LOOSE PIECE (REF)	FINISH	MATERIAL	PART NO

UNLESS OTHERWISE SPECIFIED DIMENSIONS ARE IN INCHES. TOLERANCES ON: DECIMALS ± .010 ANGLES ±	CONTRACT NO	AMP AMP INCORPORATED Harrisburg, Pa.	
	DR M. FEHER 5-6-81	NAME PIN, UNIVERSAL MATE-N-LOK	
WIRE RANGE 24-18 AWG	CHK W. Weide 6/9/81	SIZE B	CODE IDENT NO 00779
INSULATION RANGE .100 DIA MAX	APPD 6-10-81	DRAWING NO 350561	SHEET -#
	DSGN APPD	SCALE 4-1	
	OTHER APPD		

AMP 1470-15 REV 8-79

CUSTOMER DRAWING