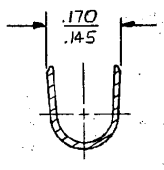
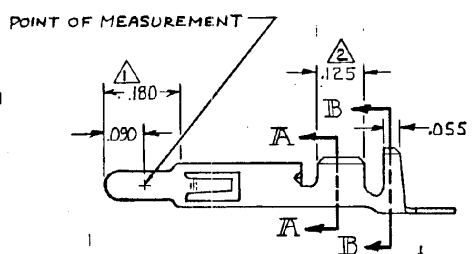
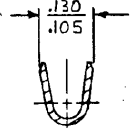
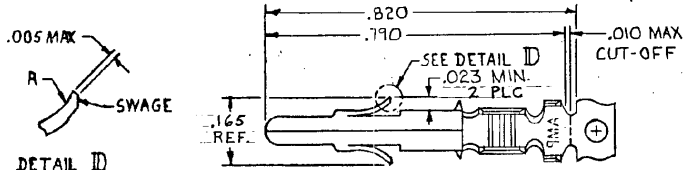


DRAWING MADE IN THIRD ANGLE PROJECTION

© COPYRIGHT 1972 BY AMP INCORPORATED, HARRISBURG, PA. ALL INTERNATIONAL RIGHTS RESERVED. AMP INCORPORATED PRODUCTS COVERED BY U. S. AND FOREIGN PATENTS AND/OR PATENTS PENDING.



REVISIONS						
P	F	ZONE	LTR	DESCRIPTION	DATE	APPROVED
✓	✓		N	REDRAWN W/O CHANGE	M-6457 6-5-81	MVF/SH
✓	✓		P	REVISED	M-7350 7/22/83	PAS/SH
✓	✓		R	REVISED	AG 57 10-20-83	SJ/RS
✓	✓		R ₁	RESTORED	3/21/85	BP/RS
✓	✓		S	REVISED PER CM-1728	9-6-88	PH/RS
✓	✓		T	OBSOLETE -5 PER CM 2309	5-3-89	TE/RS
✓	✓		U	REVISED PER CM-3286	2-7-91	PK/RS
✓	✓		V	REV PER EC 0730-3607-91	1-6-94	RV/RS
✓	✓		W	REV PER EC 0730-0141-94	7-26-94	RV/RS
✓	✓		Y	OBS -8 PER EC 0730-0135-96	7-19-96	JH/RS

- △ PLATED WITH .000030 GOLD, OVER .000050 NICKEL UNDERPLATE.
- △ PLATED INTERNALLY WITH .000030 GOLD.

350547-7	MINI	GOLD	△ .012 BRASS	350218-7
350547-6			△ .012 PH. BRZ	350218-6
350547-3		PRE-TIN	.012 PH. BRZ	350218-3
350547-2	MINI	GOLD	△ .012 BRASS	350218-2
350547-1		PRE-TIN		350218-1

LOOSE PIECE (REF)	APPLICATOR TYPE	FINISH	MATERIAL	PART NO
UNLESS OTHERWISE SPECIFIED DIMENSIONS ARE IN INCHES. TOLERANCES ON: DECIMALS ± .015 ANGLES ±		CONTRACT NO		
WIRE RANGE		CHK M. FEHER 5-6-81		
20-14 AWG		CHK J.S. Heida 6/9/81		
INSULATION RANGE		APPD J. R. Rink 6-10-81		
.130 DIA MAX		APPO		
		OTHER APPD		
		NAME PIN, UNIVERSAL MATE-N-LOK		
		SIZE B	CODE IDENT NO 00779	DRAWING NO 350218
		SCALE 4-1		SHEET

CUSTOMER DRAWING