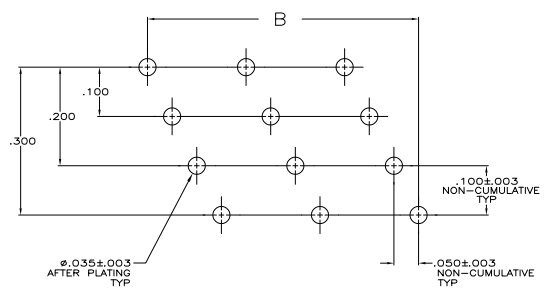
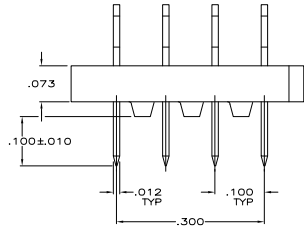
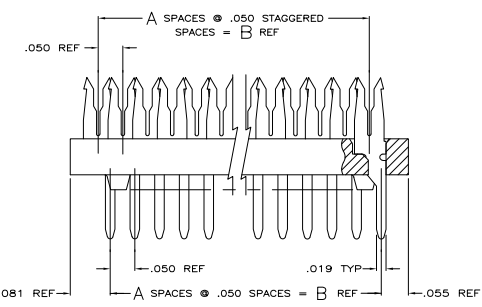


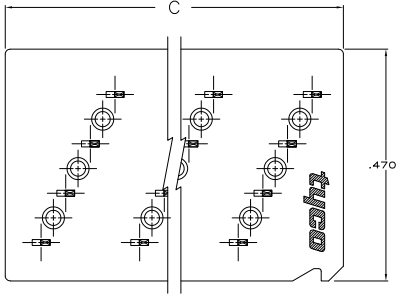
THIS DRAWING IS UNAPPROVED FOR REVISIONS
 © SPURGE, INC. BY TYCO ELECTRONICS CORPORATION. ALL RIGHTS RESERVED.

REV	DATE	DESCRIPTION	BY	CHK	APP
DF	FO				
G		REV PER QH14-0903-04			

1. ALL PARTS ASSEMBLED BY TYCO ELECTRONICS CORP.
- △ STANDOFFS: POSN 12 (9) STANDOFFS AS SHOWN.
 - POSN 16 (12) STANDOFFS, 3 PER DIAGONAL ROW.
 - POSN 20 (15) STANDOFFS, 3 PER DIAGONAL ROW.
 - POSN 24 (18) STANDOFFS, 3 PER DIAGONAL ROW.
 - POSN 28 (21) STANDOFFS, 3 PER DIAGONAL ROW.
 - POSN 32 (24) STANDOFFS, 3 PER DIAGONAL ROW.
 - POSN 36 (27) STANDOFFS, 3 PER DIAGONAL ROW.
 - POSN 40 (30) STANDOFFS, 3 PER DIAGONAL ROW.
 - POSN 44 (33) STANDOFFS, 3 PER DIAGONAL ROW.
 - POSN 48 (36) STANDOFFS, 3 PER DIAGONAL ROW.
 - POSN 52 (39) STANDOFFS, 3 PER DIAGONAL ROW.
 - POSN 56 (42) STANDOFFS, 3 PER DIAGONAL ROW.
 - POSN 60 (45) STANDOFFS, 3 PER DIAGONAL ROW.
- △ FLAME RETARDANT, 94 V-0 RATED, GLASS FILLED, NYLON OR POLYESTER, COLOR: BLACK.
 - △ FINISH: BRIGHT TIN-LEAD .000100-.000200 THK OVER NICKEL .000050 MIN THK.
 - △ FINISH: BRIGHT TIN .000100-.000200 THK OVER NICKEL .000050 MIN THK.



RECOMMENDED HOLE LAYOUT



△	3086	2,950	59	60	6-111356-3	
△	2086	1,950	39	40	5-111356-8	
△	1286	1,150	23	24	5-111356-4	
△	1086	950	19	20	5-111356-3	
△	886	750	15	16	5-111356-2	
△	3086	2,950	59	60	1-111356-3	
DBSLETE	△	2886	2,750	55	56	1- -2
DBSLETE	△	2686	2,550	51	52	1- -1
DBSLETE	△	2486	2,350	47	48	1- -0
DBSLETE	△	2286	2,150	43	44	- -9
△	2086	1,950	39	40	- -8	
DBSLETE	△	1886	1,750	35	36	- -7
DBSLETE	△	1686	1,550	31	32	- -6
DBSLETE	△	1486	1,350	27	28	- -5
△	1286	1,150	23	24	- -4	
△	1086	950	19	20	- -3	
△	886	750	15	16	- -2	
DBSLETE	△	686	550	11	12	111356-1

FINISH	C	B	A	NO OF POSN	PART NUMBER
△					

THIS DRAWING IS A CONTROLLED DOCUMENT. THE MELCON 23-708-01
 OF LENDER 23-708-01
 MUSELLI 23-708-01
 REVISED SPEC
 ASSEMBLY, PADDLEBOARD, FULL ROW
 .100 LONG POSTS, FULL TIN PLATED CONTACTS
 AMP-LATCH
 SIZE 10-11
 DRAWING NO A100779
 PART NO 111356
 CUSTOMER DRAWING