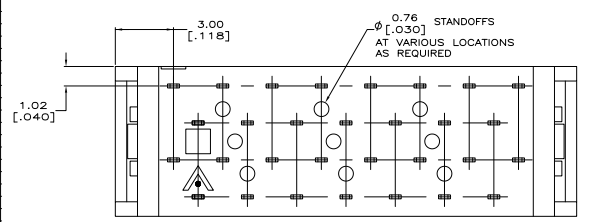
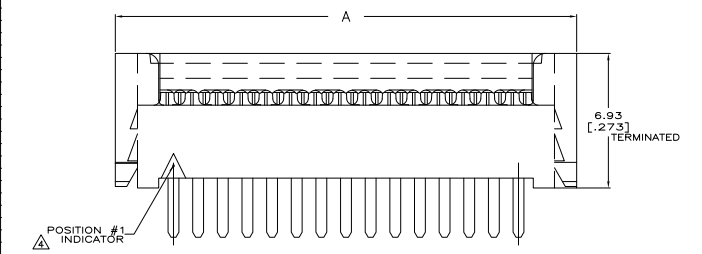
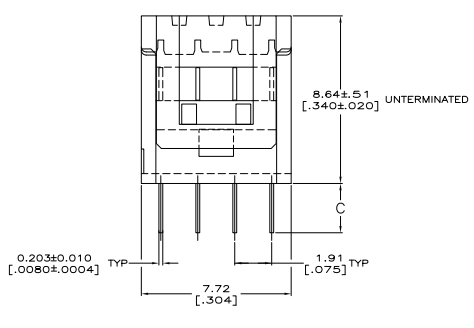
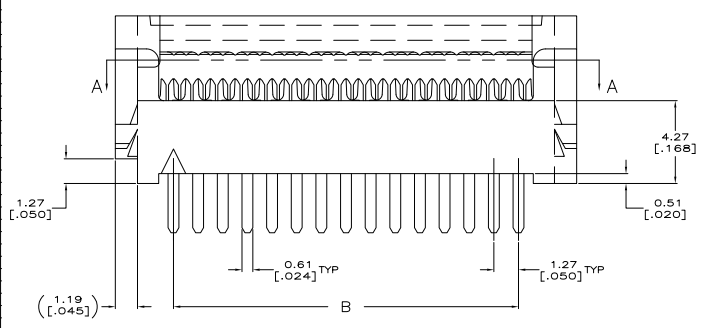


THIS DRAWING IS UNPUBLISHED
 ALL RIGHTS RESERVED

| REV | DATE | DESCRIPTION | BY | CHK | APP |
|-----|------|---------------------------|--------|-----|-----|
| 00 | | | | | |
| D1 | | REVISED PER EDD-11-004835 | 11MR11 | RK | HMR |



- △ HOUSING: UL RATED 94V-0 LCP THERMOPLASTIC, COLOR BLACK.
- △ COVER: UL RATED 94V-0 POLYESTER MOLDING COMPOUND, COLOR BLACK.
- △ CONTACTS: COPPER ALLOY.
- △ CONTACTS: 0.00254 [0.00100] MIN MATTE TIN OVER 0.00127 [0.00050] MIN NICKEL.
- △ POSITION 1 INDICATOR, OMITTED FOR PART NUMBER 2-5111595-1.
- △ VOID CORES MAY OR MAY NOT BE PRESENT BETWEEN ANY 2 ROWS OF CONTACTS.

| | | | | | | |
|----|------|-------|-------|-----|-------------|---|
| #2 | 3.30 | 49.53 | 55.52 | 80 | 2-5111595-2 | △ |
| #2 | 2.54 | 41.91 | 47.90 | 68 | 2-5111595-1 | |
| #2 | 2.54 | 18.51 | 22.90 | 28 | 2-5111595-0 | |
| #2 | 2.54 | 41.91 | 47.90 | 68 | 1-5111595-9 | |
| #1 | 2.54 | 27.94 | 33.93 | 46 | 1-5111595-7 | |
| #2 | 2.54 | 62.23 | 68.22 | 100 | 1-5111595-6 | |
| #2 | 2.54 | 49.53 | 55.52 | 80 | 1-5111595-5 | |
| #2 | 2.54 | 44.45 | 50.44 | 72 | 1-5111595-4 | |
| #2 | 2.54 | 39.37 | 45.36 | 64 | 1-5111595-3 | |
| #2 | 2.54 | 36.83 | 42.82 | 60 | 1-5111595-2 | |
| #1 | 2.54 | 30.48 | 36.47 | 50 | 1-5111595-1 | |
| #2 | 2.54 | 24.15 | 30.12 | 44 | 1-5111595-0 | |
| #2 | 2.54 | 26.67 | 32.66 | 40 | 5111595-9 | |
| #1 | 2.54 | 20.32 | 26.31 | 34 | 5111595-8 | |
| #1 | 2.54 | 17.78 | 23.77 | 30 | 5111595-7 | |
| #1 | 2.54 | 15.24 | 21.23 | 26 | 5111595-6 | |
| #2 | 2.54 | 13.97 | 19.96 | 24 | 5111595-5 | |
| #2 | 2.54 | 11.43 | 17.42 | 20 | 5111595-4 | |
| #2 | 2.54 | 8.89 | 14.88 | 16 | 5111595-3 | |
| #1 | 2.54 | 7.52 | 13.51 | 14 | 5111595-2 | |
| #1 | 2.54 | 5.08 | 11.07 | 10 | 5111595-1 | |

THIS DRAWING IS A CONTROLLED DOCUMENT

INCHES (mm) DECIMALS (mm)

DATE: 11-28-04

REV: 11-28-04

DESIGNED BY: M. WILMSLEY

DATE: 11-28-04

REV: 11-28-04

108-1109

114-25040

100779

5111595

TE Connectivity

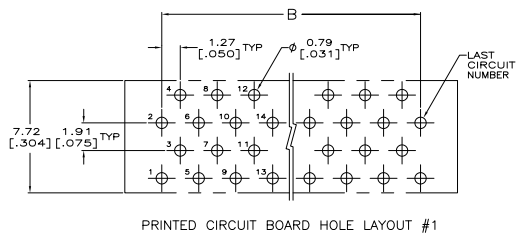
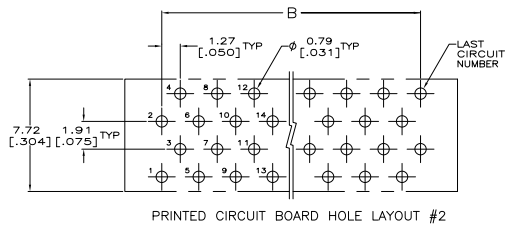
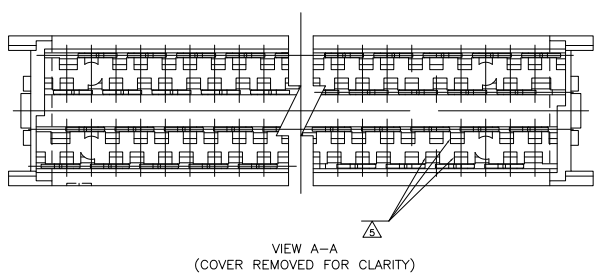
AMPADJ SYSTEM 50, CONNECTOR, PINS/BOARD

10:1

1 2 D1

THIS DRAWING IS UNPUBLISHED
 ALL RIGHTS RESERVED

| REV | DATE | DESCRIPTION | BY | APP'D |
|-----|------|-------------|----|-------|
| 1 | | SEE SHEET 1 | | |



| | | | | |
|----------------------------------------|--|------------------|-------|----------------------------------------------|
| THIS DRAWING IS A CONTROLLED DOCUMENT. | | REV. ATTACHA | SHOWN | TE TE Connectivity |
| DRAWING NO. 000779 | | REV. B000E | SHOWN | |
| DESIGNED BY M. WILMSLEY | | REV. M. WILMSLEY | SHOWN | AMP400U SYSTEM 50, CONNECTOR, PADDLEBOARD |
| CHECKED BY | | REV. | SHOWN | DATE 10-11-95 |
| DRAWN BY | | REV. | SHOWN | DATE 10-11-95 |
| DATE 10-11-95 | | REV. | SHOWN | DATE 10-11-95 |
| DRAWN BY | | REV. | SHOWN | DATE 10-11-95 |
| DATE 10-11-95 | | REV. | SHOWN | DATE 10-11-95 |