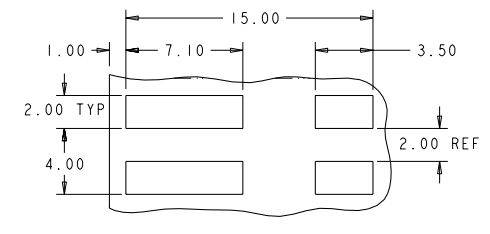


RECOMMENDED CONNECTOR PLACEMENT SCALE 6:1



RECOMMENDED PCB LAYOUT SCALE 6:1

REVOLUTIONS		DATE	BY	APP'D
P	LYA			
A	REVISED PER ECR-09-006557	29MAR2009	HMR	DD

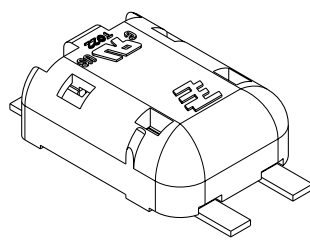
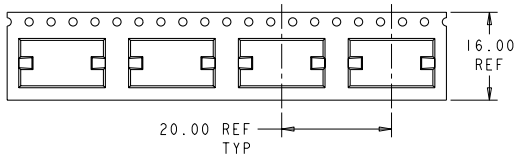
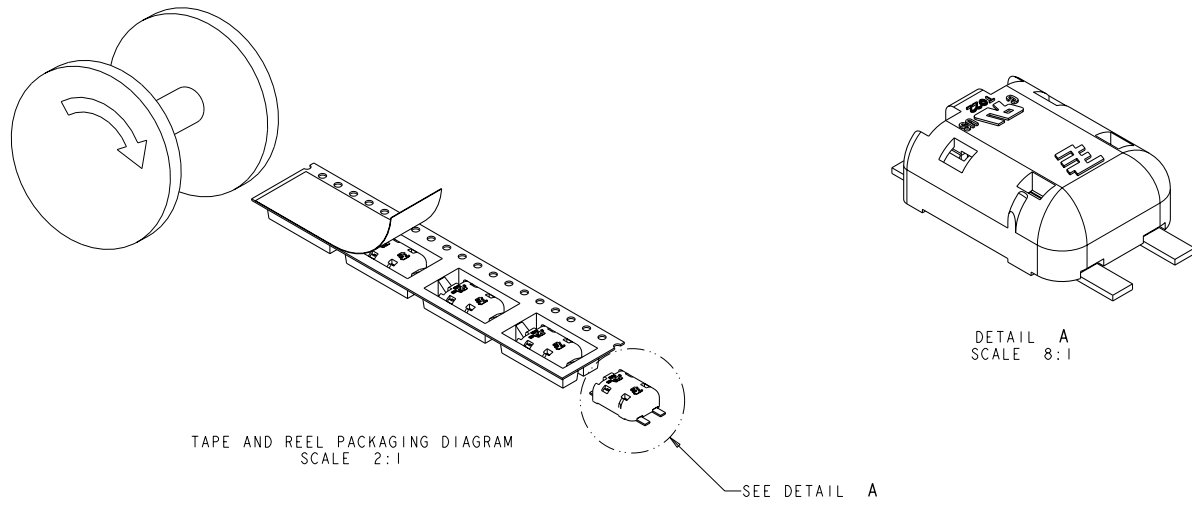
- △ MATERIALS AND FINISH:
 - HOUSING: LCP, COLOR: WHITE
 - CONTACTS: COPPER ALLOY, FINISH: TIN
- 2. MUST COMPLY WITH DIRECTIVE 2002/95/EC (ROHS)
- 4. WIRE TYPES AND SIZES ACCEPTED
 - 18, 20 AND 22 AWG SOLID WIRE
 - 18 AND 20 AWG PREBOND STRANDED WIRE
 - 18 AWG STRANDED WIRE (16 STRAND COUNT)
 - MAX INSULATION OD: 2.10 MM (.083")
 - STRIP LENGTH: 7.0±1.0 (.276")
- 5. PACKAGED IN TAPE AND REEL
- 6. SEALED CONNECTOR, SILICONE GEL FILLED
- △ MATERIALS AND FINISH:
 - HOUSING: LCP, COLOR: BLACK
 - CONTACTS: COPPER ALLOY, FINISH: TIN

△	BLACK	1954785-2
△	WHITE	1954785-1
MATERIAL	COLOR	PART NO.

DIMENSIONS: mm TOLERANCES UNLESS OTHERWISE SPECIFIED: 0 PLC ±.10 1 PLC ±.15 2 PLC ±.20 3 PLC ±.25 4 PLC ±.30 ANGLES ±.1°		DWG NO. BROWN 23JAN2008 CDR BY DYER 23JAN2008 PRODUCT SPEC 108-2284 APPLICATION SPEC 114-13194 WEIGHT - CUSTOMER DRAWING	NAME ASSEMBLY, SMT POKE-IN CONNECTOR, SEALED SIZE CASE CODE DRAWING NO. A200779 SCALE 1:1 SHEET 1 OF 2 REV A	Tyco Electronics Harrisburg, PA 17105-3608
---	--	---	---	---

THIS DRAWING IS UNPUBLISHED. RELEASED FOR PUBLICATION
 BY TYCO ELECTRONICS CORPORATION. ALL RIGHTS RESERVED.

LOC		DIST		REVISIONS			
P	LYA	DESCRIPTION	DATE	OWN	APVS		
-	-	SEE SHEET 1	-	-	-		



DETAIL A
 SCALE 8:1

DIMENSIONS: mm		TO MANUFACTURER'S SPECIFICATIONS OPERATING SPECIFICATIONS		DWN R. BROWN 23JAN2008	APVS J. DYER 23JAN2008	Tyco Electronics Harrisburg, PA 17105-3608
MATERIAL SEE TABLE		WEIGHT SEE TABLE		PRODUCT SPEC 108-2284	APPLICATION SPEC 114-13194	ASSEMBLY: SMT POKE-IN CONNECTOR, SEALED
CUSTOMER DRAWING				SIZE A200779	CASE CODE C-1954785	DRAWING NO 1954785
				SCALE 1:1	SHEET 2	REV A

AMP 1471-B REV 31MAR2000