

4

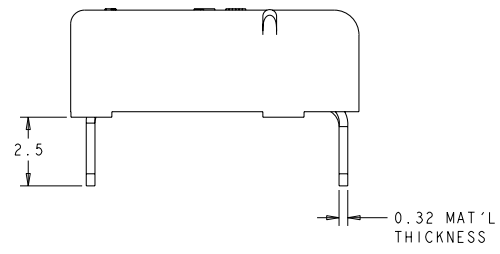
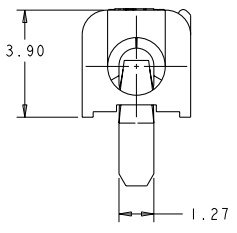
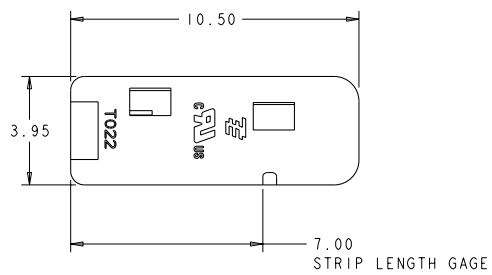
3

2

1

THIS DRAWING IS UNPUBLISHED. RELEASED FOR PUBLICATION BY TYCO ELECTRONICS CORPORATION. ALL RIGHTS RESERVED. COPYRIGHT 20

REVOLUTIONS		DATE	BY	APPD
P	LYN	DESCRIPTION	DATE	BY
A		REVISED PER ECR-09-006557	29MAR2009	HMR DD



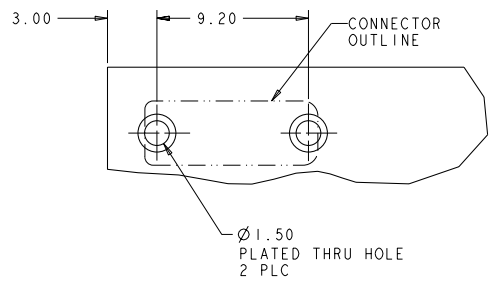
△ MATERIALS AND FINISH:  
 - HOUSING: LCP, COLOR: WHITE  
 - CONTACTS: COPPER ALLOY, FINISH: TIN

2. MUST COMPLY WITH DIRECTIVE 2002/95/EC (ROHS)

4. WIRE TYPES AND SIZES ACCEPTED  
 18, 20 AND 22 AWG SOLID WIRE  
 18 AND 20 AWG PREBOND STRANDED WIRE  
 18 AWG STRANDED WIRE (16 STRAND COUNT)  
 MAX INSULATION OD: 2.10 MM (.083")  
 STRIP LENGTH: 7.0±1.0 (.276")

5. PACKAGED IN TAPE AND REEL  
 6. SEALED CONNECTOR, SILICONE GEL FILLED

△ MATERIALS AND FINISH:  
 - HOUSING: LCP, COLOR: BLACK  
 - CONTACTS: COPPER ALLOY, FINISH: TIN



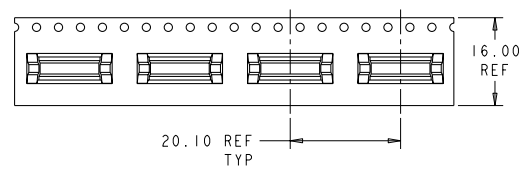
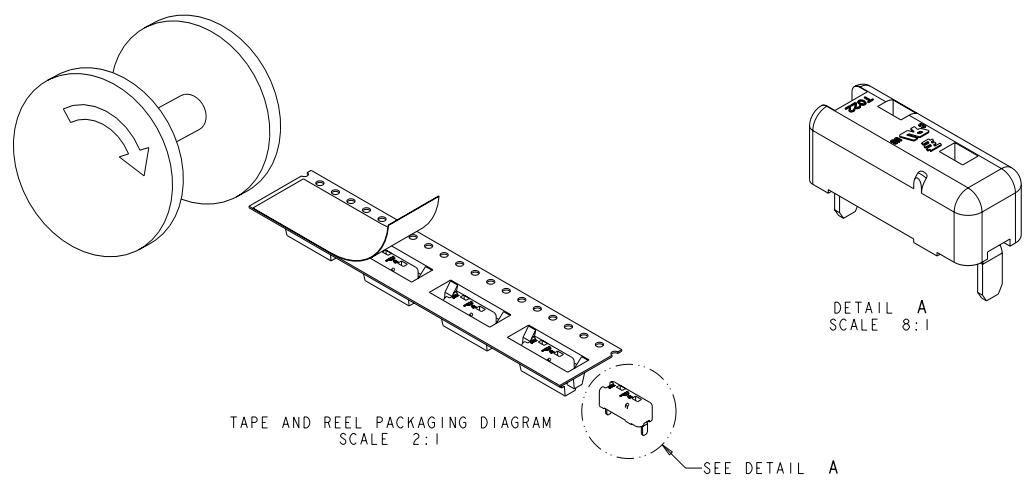
RECOMMENDED PCB LAYOUT  
 SCALE 6:1

△	BLACK	2008995-2
△	WHITE	2008995-1
MATERIAL	COLOR	PART NUMBER

<small>THIS DRAWING IS UNPUBLISHED. RELEASED FOR PUBLICATION BY TYCO ELECTRONICS CORPORATION. ALL RIGHTS RESERVED. COPYRIGHT 20</small>		DWG: R BROWN 11FEB2008 CHK: J DYER 11FEB2008 APPD: J DYER 11FEB2008	Tyco Electronics Harrisburg, PA 17105-3608
DIMENSIONS: mm 	OPERATING SPECIFICATIONS: 0 PLC ±.2 1 PLC ±0.2 2 PLC ±0.10 3 PLC ±.1 4 PLC ±.1 ANGLES ±.1°	PRODUCT SPEC: APPLICATION SPEC: WEIGHT: FINISH:	NAME: POKE-IN LED CONNECTOR ASSEMBLY I POSITION - THRU HOLE, SEALED SIZE: A200779 CASE CODE: C-2008995 DRAWING NO: 2008995 RESTRICTED TO:
MATERIAL: SEE TABLE	MATERIAL: SEE TABLE	CUSTOMER DRAWING	SCALE: 1:1 SHEET 1 OF 2 REV A

THIS DRAWING IS UNPUBLISHED. RELEASED FOR PUBLICATION  
 BY TYCO ELECTRONICS CORPORATION. ALL RIGHTS RESERVED.

REVISONS		DATE	BY	APPROV
P	LYA			
- SEE SHEET 1		-	-	-



DIMENSIONS: mm		OPERATING SPECIFICATIONS: 0 PLC 20 1 PLC 20.5 2 PLC 20.10 3 PLC 20 4 PLC 20 ANGLES 20°		DWG R. BROWN 11FEB2008	Tyco Electronics Harrisburg, PA 17105-3608
MATERIAL SEE TABLE		FINISH SEE TABLE		NAME J. DYER 11FEB2008	POKE-IN LED CONNECTOR ASSEMBLY 1 POSITION - THRU HOLE, SEALED
CUSTOMER DRAWING		WEIGHT -		SIZE A200779	DRAWING NO C-2008995
				SCALE 1:1	SHEET 2 OF 2

AMP 1471-9 REV 31MAR2000