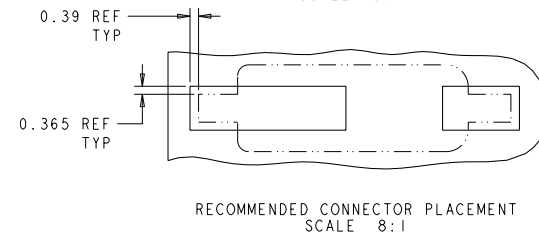
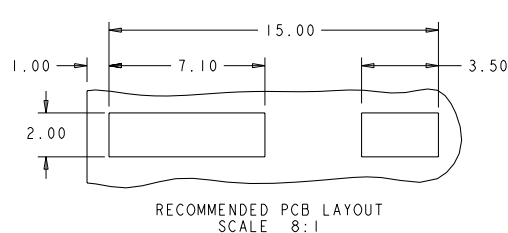
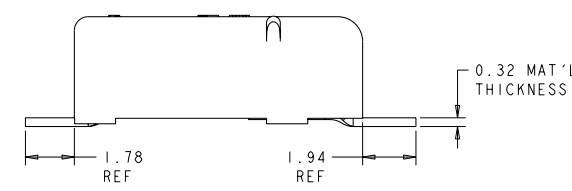
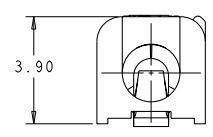
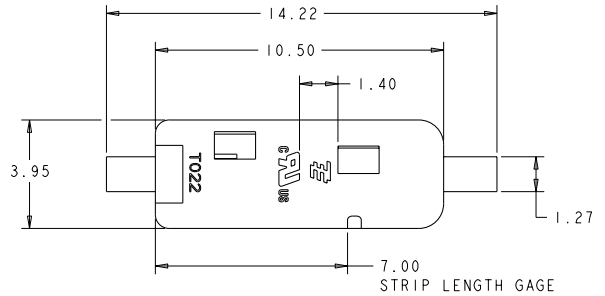


REVOLUTIONS		DATE	BY	APP'D
P	LYA			
A2	REVISED PER ECR-09-006358	19MAR2009	MMR	DD



- △ MATERIALS AND FINISH:
 - HOUSING: LCP, COLOR: WHITE
 - CONTACTS: COPPER ALLOY, FINISH: TIN
- 2. MUST COMPLY WITH DIRECTIVE 2002/95/EC (ROHS)
- 4. WIRE TYPES AND SIZES ACCEPTED
 - 18, 20 AND 22 AWG SOLID WIRE
 - 18 AND 20 AWG PREBOND STRANDED WIRE
 - 18 AWG STRANDED WIRE (16 STRAND COUNT)
 - MAX INSULATION OD: 2.10 MM (.083")
 - STRIP LENGTH: 7.0±1.0 (.276")
- 5. PACKAGED IN TAPE AND REEL.
- △ MATERIALS AND FINISH:
 - HOUSING: LCP, COLOR: BLACK
 - CONTACTS: COPPER ALLOY, FINISH: TIN

△	BLACK	2008563-2
△	WHITE	2008563-1
MATERIAL	COLOR	PART NUMBER

DIMENSIONS:		DRAWN: GURURAJ S.		DATE: 17OCT2007	
mm		CHECKED: -		BY: -	
TOLERANCES UNLESS OTHERWISE SPECIFIED:		APPRO: -		NAME: -	
0 PLC	±0.10	PRODUCT SPEC: -		APPLICATION SPEC: -	
1 PLC	±0.5	WEIGHT: -		MATERIAL: -	
2 PLC	±0.10	FINISH: -		SCALE: 10:1	
3 PLC	±0.10	CUSTOMER DRAWING		SHEET 1 OF 2	
4 PLC	±0.10			REV A2	
ANGLES	±0.5°				
FINISH	±0.10				

4

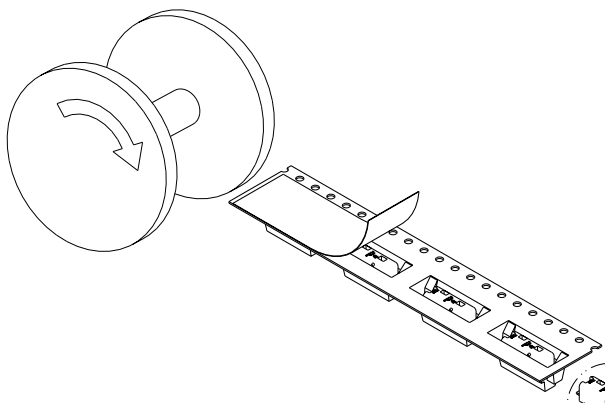
3

2

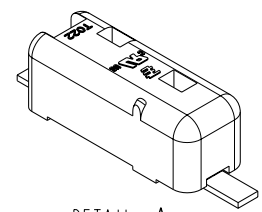
1

THIS DRAWING IS UNPUBLISHED. RELEASED FOR PUBLICATION
BY TYCO ELECTRONICS CORPORATION. ALL RIGHTS RESERVED.

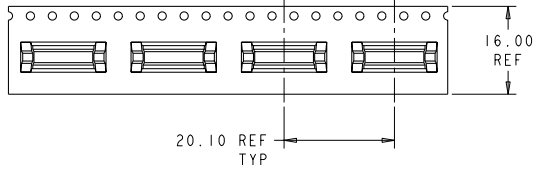
LOC	DIST	REVISIONS			
P	LYR	DESCRIPTION	DATE	BY	APPR
-	-	SEE SHEET 1	-	-	-



TAPE AND REEL PACKAGING DIAGRAM
SCALE 2:1



DETAIL A
SCALE 8:1



<small>TOP DIMENSIONS ARE CONTROLLING DIMENSIONS FOR THE CUSTOMER'S COMPONENTS. DIMENSIONS ARE GIVEN UNLESS OTHERWISE SPECIFIED.</small>		DWG GURURAJ.S	17OCT2007		Tyco Electronics Harrisburg, PA 17105-3608
DIMENSIONS: mm	TO FABRICATE ONLY: 0 PLC ±0.5 1 PLC ±0.5 2 PLC ±0.10 3 PLC ±0.10 4 PLC ±0.10 ANGLES ±0°	APPO -	NAME POKE-IN CONNECTOR ASSEMBLY, 1 POSITION SMT	PRODUCT SPEC -	SHEET CASE CODE DRAWING NO A200779 ©-2008563
MATERIAL SEE TABLE	FINISH SEE TABLE	WEIGHT -	CUSTOMER DRAWING	RESTRICTED TO -	SCALE 1:1 SHEET 2 OF 2 REV A2