

4

3

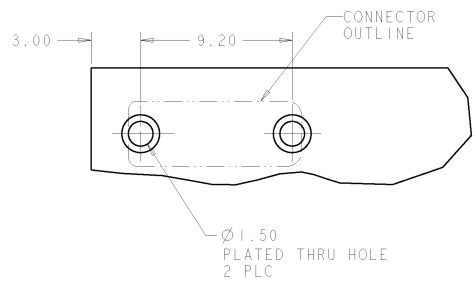
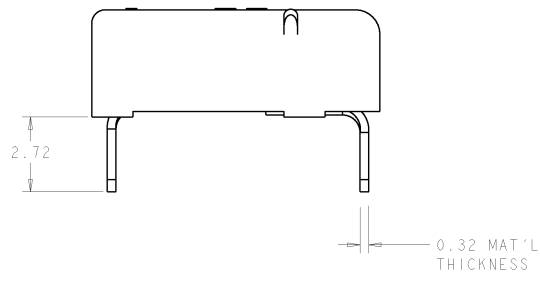
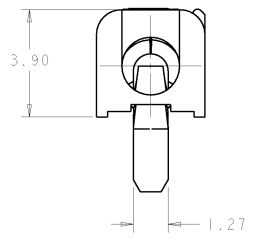
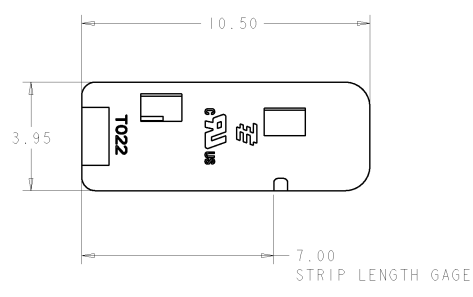
2

1

THIS DRAWING IS UNPUBLISHED. RELEASED FOR PUBLICATION BY TYCO ELECTRONICS CORPORATION. ALL RIGHTS RESERVED.

| REV | DATE | BY | APPD | DESCRIPTION |
|-----|------------|----|------|----------------------------------|
| 2 | 25/02/2008 | RB | JD | REVISED CONTACT LEAD-IN GEOMETRY |
| 3 | 14/04/2008 | JD | JD | REMOVED 7 AND 9 STRAND COUNT |

- △ MATERIALS AND FINISH:
 - HOUSING: LCP
 - CONTACTS: COPPER ALLOY, FINISH: TIN
- MUST COMPLY WITH DIRECTIVE 2002/95/EC (ROHS)
 - THIS PRODUCT HAS NOT COMPLETED VALIDATION TESTING
 - WIRE TYPES AND SIZES ACCEPTED
 18, 20 AND 22 AWG SOLID WIRE
 18 AND 20 AWG PREBOND STRANDED WIRE
 18 AWG STRANDED WIRE (16 STRAND COUNT)
 MAX INSULATION OD: 2.10 MM (.083")
 STRIP LENGTH: 7.0±1.0 (.276")
 - PACKAGED IN TAPE AND REEL PER EIA-481 SPECIFICATIONS



RECOMMENDED PCB LAYOUT SCALE 6:1

PROPOSED DESIGN
 NOT PRODUCTION TOOLED
 DESIGN IS SUBJECT TO
 CHANGE WITHOUT NOTICE

| | | | | | | | |
|-------------|--|----------------------------|--|------------------|--|--|--|
| DIMENSIONS: | | UNLESS OTHERWISE SPECIFIED | | SW: 170CT2007 | | 2008839-1 PART NUMBER | |
| mm | | mm | | TYCO ELECTRONICS | | Tyco Electronics Harrisburg, PA 17105-3408 | |
| D | | D | | PRODUCT SPEC | | POKE-IN LED CONNECTOR ASSEMBLY 1 POSITION - THRU HOLE | |
| E | | E | | APPLICATION SPEC | | SIZE CASE CODE DRAWING NO | |
| F | | F | | WEIGHT | | A2007790-2008839 | |
| G | | G | | CUSTOMER DRAWING | | SCALE: 0:1 SHEET 1 OF 1 REV 3 | |