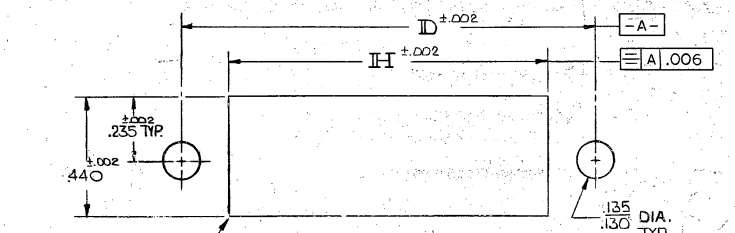
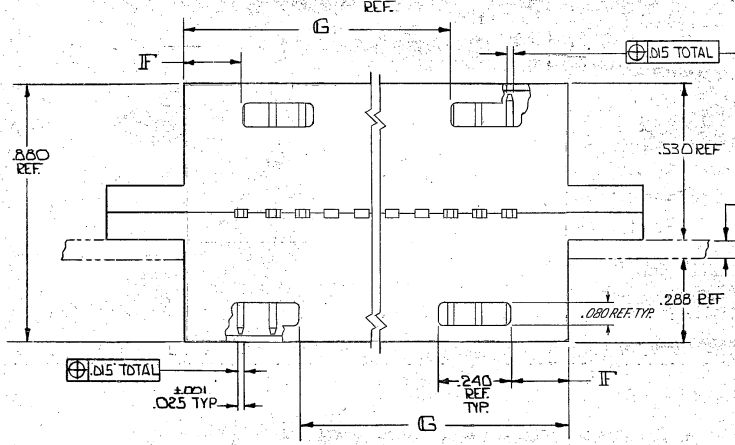
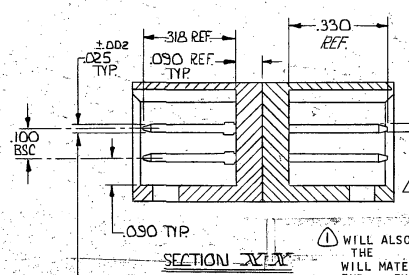
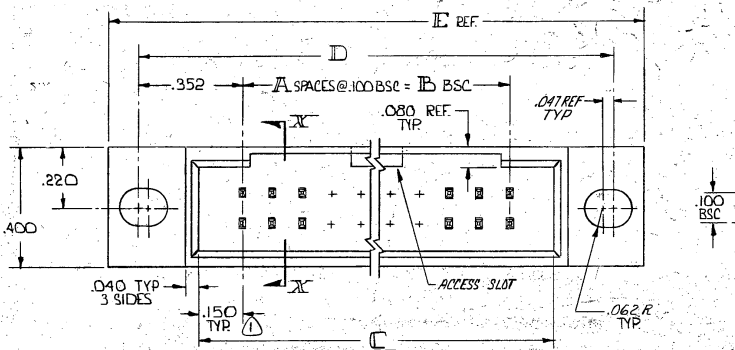


DRAWING MADE IN THIRD ANGLE PROJECTION
 © COPYRIGHT 1975-83 BY AMP INCORPORATED, HARRISBURG, PA.
 ALL INTERNATIONAL RIGHTS RESERVED. AMP INCORPORATED PRODUCTS
 COVERED BY U. S. AND FOREIGN PATENTS AND/OR PATENTS PENDING.

REVISIONS				DATE	APPROVED
F			REV PER ECO-010-0091-33	9-13	RAE/JJA
G			REV PER ECO-0375-74	3-27-77	JK
H			REV PER 0310-0146-96	2-27-77	8AS
H1			REVISED PER ECO-09-026346	NOV09	AEG



RECOMMENDED PANEL CUT-OUT

WILL ALSO MATE W/OTHER CONNECTORS WHICH ARE COMPATIBLE WITH THE .150 END DIM.
 WILL MATE W/MOD IV HAVING FOUR EXTRA EMPTY CIRCUITS (TWO EACH END -- EX: 20 POS. POST HDR. WILL MATE W/24 POS. MOD IV HSG.)

OBSOLETE PART NUMBER

	7.00	—	.190	1.204	1.004	.600	.300	3	8	2	△
△ OBSOLETE	3.300	2.890	.190	3.804	3.604	3.200	2.900	29	60	2	△
	3.200	2.790		3.704	3.504	3.100	2.800	28	58	2	△
	3.100	2.690		3.604	3.404	3.000	2.700	27	56	2	△
	3.000	2.590		3.504	3.304	2.900	2.600	26	54	2	△
	2.900	2.490		3.404	3.204	2.800	2.500	25	52	2	△
	2.800	2.390		3.304	3.104	2.700	2.400	24	50	2	△
	2.700	2.290		3.204	3.004	2.600	2.300	23	48	2	△
	2.600	2.190		3.104	2.904	2.500	2.200	22	46	1	△
	2.500	2.090		3.004	2.804	2.400	2.100	21	44	1	△
	2.400	1.990		2.904	2.704	2.300	2.000	20	42	1	△
	2.300	1.890		2.804	2.604	2.200	1.900	19	40	1	△
	2.200	1.790		2.704	2.504	2.100	1.800	18	38	1	△
	2.100	1.690		2.604	2.404	2.000	1.700	17	36	1	△
	2.000	1.590		2.504	2.304	1.900	1.600	16	34	1	△
△ OBSOLETE	1.900	1.490		2.404	2.204	1.800	1.500	15	32	1	△
	1.800	1.390		2.304	2.104	1.700	1.400	14	30	1	△
	1.700	1.290		2.204	2.004	1.600	1.300	13	28	1	△
	1.600	1.190		2.104	1.904	1.500	1.200	12	26	1	△
	1.500	1.090		2.004	1.804	1.400	1.100	11	24	1	△
	1.400	.990		1.904	1.704	1.300	1.000	10	22	1	△
	1.300	.890	.190	1.804	1.604	1.200	.900	9	20	1	△
	1.200	—	.490	1.704	1.504	1.100	.800	8	18	1	△
	1.100	—	.390	1.604	1.404	1.000	.700	7	16	1	△
	1.000	—	.390	1.504	1.304	.900	.600	6	14	1	△
	.900	—	.290	1.404	1.204	.800	.500	5	12	1	△
	.800	—	.290	1.304	1.104	.700	.400	4	10	1	△

UNLESS OTHERWISE SPECIFIED DIMENSIONS ARE IN INCHES. TOLERANCES ON: DECIMALS ±.005 ANGLES ±.005	CONTRACT NO	AMP INCORPORATED Harrisburg, Pa.
	DR 3/18/75	
MATERIAL HSGS. - GLASS FILLED NYLON COLOR: BLACK CONTACT - PHOS BRONZE FINISH CONTACT - .00030 GOLD OVER .00050 NICKEL	CHKD SHW 9-18-75	NAME HEADER ASS'Y. MOD II 100 X 100 CENTERS MTG. EARS W/ PIN PROTECTORS BOTH SIDES (MATES W/ AMP LATCH AND REF.)
	APPRD R. Clark 9-22-75	
DESIGN APPD	DATE RECEIVED	87605
OTHER APPD		SHEET 1 of 1

CUSTOMER DRAWING