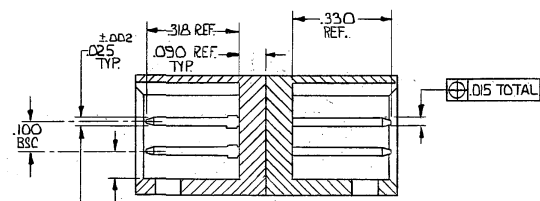
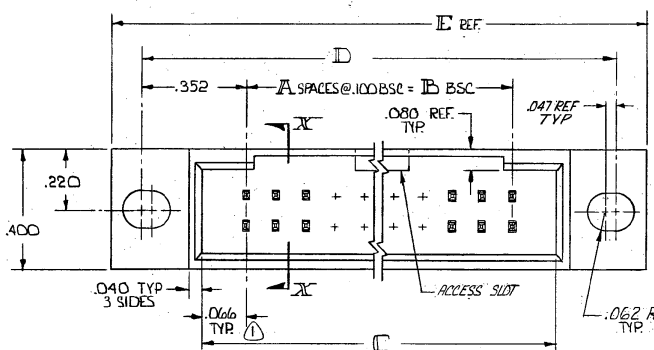


DRAWING MADE IN THIRD ANGLE PROJECTION

© COPYRIGHT 1975-78 BY AMP INCORPORATED, HARRISBURG, PA.
 ALL INTERNATIONAL RIGHTS RESERVED. AMP INCORPORATED PRODUCTS
 COVERED BY U. S. AND FOREIGN PATENTS AND/OR PATENTS PENDING.

LOC DIST
 AD 39

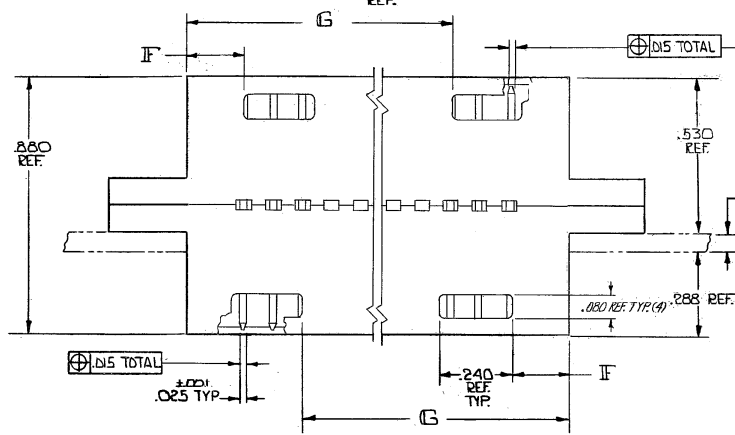
REVISIONS					
P/F	ZONE	LTR	DESCRIPTION	DATE	APPROVED
	G		REV PER 0310-0025-98		JO
	G1		REVISED PER ECO-09-026346	NOV89	AEG



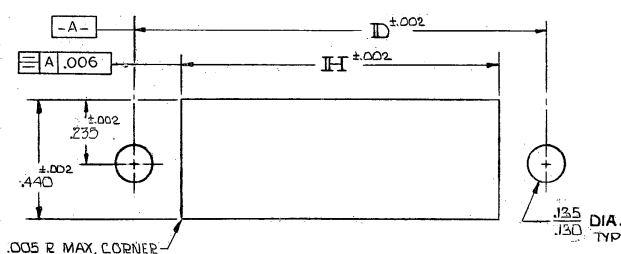
WILL ALSO MATE W/OTHER CONNECTORS WHICH ARE COMPATIBLE WITH THE .066 END DIM.

OBsolete PART NUMBER

OBsolete PARTS: OBsolete CIS STREAMLINING PER D.RENAUD/D.SINISI



OBsolete	3.132	2.806	.106	3.804	3.604	3.032	2.900	29	60	2-37608-6			
	3.032	2.707		3.704	3.504	2.932	2.800	28	58	2-37608-5			
	2.932	2.606		3.404	3.404	2.832	2.700	27	56	2-37608-4			
	2.832	2.506		3.504	3.304	2.732	2.600	26	54	2-37608-3			
	2.732	2.406		3.404	3.204	2.632	2.500	25	52	2-37608-2			
	2.632	2.306		3.304	3.104	2.532	2.400	24	50	2-37608-1			
	2.532	2.206		3.204	3.004	2.432	2.300	23	48	2-37608-0			
	2.432	2.106		3.104	2.904	2.332	2.200	22	46	2-37608-9			
	2.332	2.006		3.004	2.804	2.232	2.100	21	44	2-37608-8			
	2.232	1.906		2.904	2.704	2.132	2.000	20	42	2-37608-7			
	2.132	1.806		2.804	2.604	2.032	1.900	19	40	2-37608-6			
	2.032	1.706		2.704	2.504	1.932	1.800	18	38	2-37608-5			
	1.932	1.606		2.604	2.404	1.832	1.700	17	36	2-37608-4			
	1.832	1.506		2.504	2.304	1.732	1.600	16	34	2-37608-3			
	1.732	1.406		2.404	2.204	1.632	1.500	15	32	2-37608-2			
	1.632	1.306		2.304	2.104	1.532	1.400	14	30	2-37608-1			
	1.532	1.206		2.204	2.004	1.432	1.300	13	28	2-37608-0			
	1.432	1.106		2.104	1.904	1.332	1.200	12	26	2-37608-9			
	1.332	1.006		2.004	1.804	1.232	1.100	11	24	2-37608-8			
	1.232	.906		1.904	1.704	1.132	1.000	10	22	2-37608-7			
	1.132	.806	.106	1.804	1.604	1.032	.900	9	20	2-37608-6			
	1.032	—	.406	1.704	1.504	.932	.800	8	18	2-37608-5			
	.932	—	.306	1.604	1.404	.832	.700	7	16	2-37608-4			
	.832	—	.206	1.504	1.304	.732	.600	6	14	2-37608-3			
	.732	—	.106	1.404	1.204	.632	.500	5	12	2-37608-2			
	.632	—	—	1.304	1.104	.532	.400	4	10	2-37608-1			
				H	G	F	E	D	C	B	A	NO. OF POS.	PART NO.



RECOMMENDED PANEL CUT-OUT

UNLESS OTHERWISE SPECIFIED DIMENSIONS ARE IN INCHES. TOLERANCES ON: DECIMALS ±.005 ANGLES ±.005 MATERIAL HSGS. - GLASS FILLED NYLON COLOR: BLACK CONTACT- PHOS. BRONZE FINISH CONTACT - 000020 GOLD OVER .000050 NICKEL	CONTRACT NO DR <i>Sullivan 5/18/75</i> CHK <i>D.W. Miller 9-18-75</i> APPR <i>Bennett 9/22/75</i> APPD <i>R. Clark 9/22/75</i> DSGN APPD OTHER APPD	NAME HEADR ASS'Y, MOD II, .100 X .100 CENTERS, MTG. EARS, W/ PIN PROTECTORS BOTH SIDES MATES W/ MOD I (BOTH SIDES)	
	AMP INCORPORATED Harrisburg, Pa.	SIZE CODE IDENT NO DRAWING NO 00779	87608
	SCALE	SHEET 1 of 1	CUSTOMER DRAWING