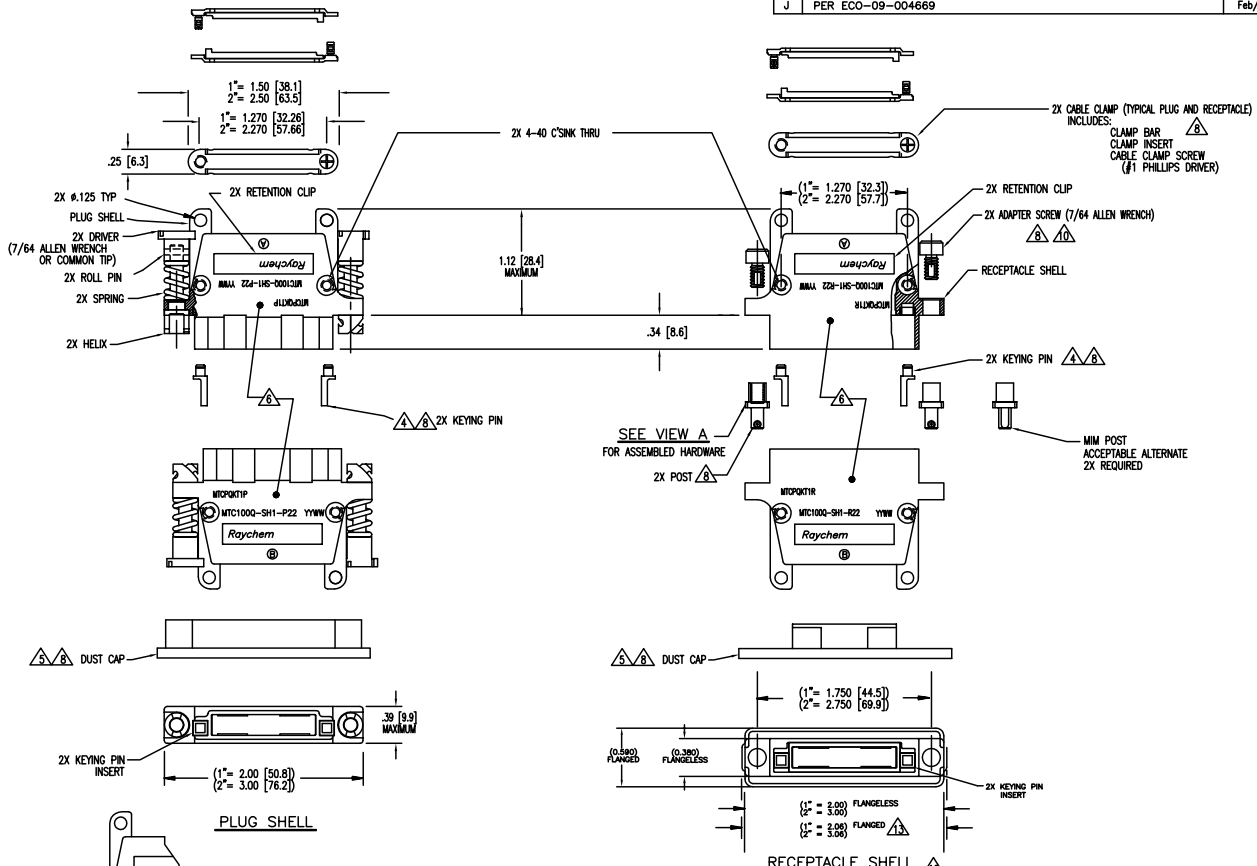


NOTES: SEE SHEET 2.

REVISIONS			
LTR	DESCRIPTION	DATE	APPROVED
H	REVISED PER DCR# C061468	Jan/11/07	M.HIGGY
J	PER ECO-09-004669	Feb/24/09	M.HIGGY

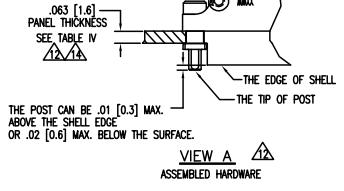


© 2006-2009 Tyco Electronics Corporation. All rights reserved

CUSTOMER DRAWING

UNLESS OTHERWISE SPECIFIED DIMENSIONS ARE IN INCHES. METRIC DIMENSIONS ARE IN BRACKETS.		<table border="1"> <tr> <td>DRAWN</td> <td>T.SEATON</td> <td>96JUN28</td> </tr> <tr> <td>CHECKED</td> <td></td> <td></td> </tr> <tr> <td>APPROVED</td> <td>P.DUTTON</td> <td>96JUL03</td> </tr> <tr> <td>APPROVED</td> <td></td> <td></td> </tr> <tr> <td>CAD NAME</td> <td colspan="2">MTC100Q-SHX-X2X-XXX</td> </tr> </table>	DRAWN	T.SEATON	96JUN28	CHECKED			APPROVED	P.DUTTON	96JUL03	APPROVED			CAD NAME	MTC100Q-SHX-X2X-XXX		<table border="1"> <tr> <td colspan="2"> </td> <td> Raychem Interconnect 300 Constitution Drive Newark, CA 94528 U.S.A. </td> </tr> <tr> <td colspan="3">TITLE</td> </tr> <tr> <td colspan="3">SHELL, PLUG AND RECEPTACLE MTC100Q SERIES</td> </tr> <tr> <td>SIZE</td> <td>CAGE CODE:</td> <td>DWG. NO.</td> <td>REV</td> </tr> <tr> <td>C</td> <td>06090</td> <td>MTC100Q-SHX-X2X-XXX</td> <td>J</td> </tr> <tr> <td colspan="3">DO NOT SCALE THIS DRAWING</td> <td>SHEET 1 OF 3</td> </tr> </table>			Raychem Interconnect 300 Constitution Drive Newark, CA 94528 U.S.A.	TITLE			SHELL, PLUG AND RECEPTACLE MTC100Q SERIES			SIZE	CAGE CODE:	DWG. NO.	REV	C	06090	MTC100Q-SHX-X2X-XXX	J	DO NOT SCALE THIS DRAWING			SHEET 1 OF 3
DRAWN	T.SEATON	96JUN28																																					
CHECKED																																							
APPROVED	P.DUTTON	96JUL03																																					
APPROVED																																							
CAD NAME	MTC100Q-SHX-X2X-XXX																																						
		Raychem Interconnect 300 Constitution Drive Newark, CA 94528 U.S.A.																																					
TITLE																																							
SHELL, PLUG AND RECEPTACLE MTC100Q SERIES																																							
SIZE	CAGE CODE:	DWG. NO.	REV																																				
C	06090	MTC100Q-SHX-X2X-XXX	J																																				
DO NOT SCALE THIS DRAWING			SHEET 1 OF 3																																				
DECIMALS	.XXX ± .005 { .13 mm }																																						
	.XX ± .02 { .5 mm }																																						
ANGLES	.X ±																																						
WEIGHT:	.9	THIRD ANGLE PROJECTION																																					

THIS DRAWING AND THE INFORMATION SET FORTH HEREON ARE THE PROPERTY OF TYCO ELECTRONICS AND ARE TO BE HELD IN TRUST AND CONFIDENCE. PUBLICATION, DUPLICATION, DISCLOSURE OR USE FOR ANY PURPOSE NOT EXPRESSLY AUTHORIZED IN WRITING BY TYCO ELECTRONICS IS PROHIBITED.



DWG. NO. MTC100Q-SHX-X2X-XXX SHEET 1

A

4 3 2 1

4

3

2

1

NOTES:

1. SHELL PART NUMBER VARIABLES: (NOT ALL POSSIBLE CONFIGURATIONS SHOWN ON THIS DRAWING ARE AVAILABLE AS STANDARD PRODUCTS. PLEASE CHECK WITH RAYCHEM TO CONFIRM AVAILABILITY.)

MTC100Q-SHX-X2X-XXX

MODIFICATIONS (see table I) (THIS SPACE BLANK IF NO MODIFICATION IS APPLICABLE)

2= WITH CABLE CLAMP AND EARS ON SHELL
3= W/O CABLE CLAMP AND EARS ON SHELL

2= ELECTROLESS NICKEL (BLACK MARKING)

P= PLUG
F= FLANGED
R= FLANGELESS RECEPTACLE

1= 1 INCH
2= 2 INCH

S= SHELL / GROUNDING BUSBAR

2. MATERIAL:

- A) SHELL ALUMINUM ALLOY PER ASTM B85
- B) RETENTION CLIP COPPER ALLOY 172 PER ASTM B194
- C) CAP SCREW STAINLESS STEEL PER SAE-AMS-QQ-S-763, 300 SERIES
- D) POST * STAINLESS STEEL , PER AISI 17-4 PH
- E) ROLL PIN STAINLESS STEEL PER SAE-AMS 5673, 400 SERIES
- F) KEYING PIN HIGH GRADE POLYARYLENE THERMOPLASTIC, MOLDED
- G) KEY PINS INSERT HIGH GRADE POLYARYLENE THERMOPLASTIC, MOLDED
- H) CLAMP BAR STAINLESS STEEL PER SAE-AMS-QQ-S-763, 300 SERIES
- J) CLAMP INSERT SILICONE ELASTOMER PER MIL-DTL-25988B
- K) DRIVER * STAINLESS STEEL , PER AISI 17-4 PH
- L) SPRING STAINLESS STEEL PER AMS 5673, 17-7 PH
- L) HELIX * STAINLESS STEEL , PER AISI 17-4 PH

* ACCEPTABLE ALTERNATE, STAINLESS STEEL, PER MPIF STD 35, MIM-17-4 PH

3. FINISH:

APPLIES TO NICKEL PLATED CONNECTORS

- A) SHELL NICKEL PLATED PER SAE-AMS-C-26074 CLASS 3, GRADE B
- B) RETENTION CLIP NICKEL PLATED PER SAE-AMS-C-26074 CLASS 2, .00002 MINIMUM
- C) POST CAP SCREW PASSIVATED PER SAE-AMS-QQ-P-35
- D) POST NICKEL TEFLON PLATED PER TECHMETALS 117C
- E) HELIX NICKEL TEFLON PLATED PER TECHMETALS 117C
- F) ROLL PIN PASSIVATED PER SAE-AMS-QQ-P-35
- G) DRIVER PASSIVATED PER SAE-AMS-QQ-P-35

- 4 KEYING PIN IS SUPPLIED UNINSTALLED, USER TO PRESS INTO PROPER KEYING POSITION. SEE TABLE 5 FOR STANDARD KEYING PIN POSITIONS. FOR ADDITIONAL KEYING OPTIONS REFER TO D-659-0080.
- 5 STANDARD (RED) DUST CAP ARE SUPPLIED WITH EACH PLUG AND RECEPTACLE. SEE TABLE VI FOR MORE INFORMATION.
- 6 APPROPRIATE PART NUMBERS AND DATE CODES ARE STAMPED APPROXIMATELY AS SHOWN ON "B" SIDE. ALL "A" SIDE MARKINGS ARE OPTIONAL.
- 7. THESE PARTS MEET THE REQUIREMENTS OF TE SPECIFICATION C-6114.
- 8 THESE ITEMS ARE SUPPLIED UNASSEMBLED.
- 9 SEE TABLE II SHEET 3, WEIGHTS ARE WITHOUT DUST CAP.
- 10 RECEPTACLE POST SCREWS (CAP SCREWS) ARE TO BE TORQUED TO 15±1 INCH-LBS (1.0±0.07 N-M)
- 11 PLUG AND RECEPTACLE SHELLS ARE DESIGNED TO ACCEPT EITHER PIN OR SOCKET INSERTS. OR MIXED IN THE TWO INCHES STYLE.
- 12 THIS RECEPTACLE IS RECOMMENDED FOR REAR PANEL MOUNTING APPLICATION. REMOVING AS MANY PANEL WASHERS AS REQUIRED TO ACCOMMODATE THE THICKNESS OF THE PANEL BEING USED. SEE SHEET 3, TABLE 4, FIGURE 1. USE ONLY SCREWS SUPPLIED WITH CONNECTOR. POST TO BE FLUSH WITHIN TOLERANCE AS SHOWN SEE VIEW 'A' PAGE # 1.
- 13 WHEN MOUNTING FLANGELESS CONNECTORS ADJACENT TO ONE ANOTHER AND USING THE .400 MINIMUM CENTERLINE LOCATION, THERE WILL BE NO WEB BETWEEN PANEL CUT-OUTS. SEE SHEET 3, TABLE 3, FOR DETAILS.
- 14 THE HARDWARE FOR THIS CONNECTOR IS DESIGNED TO BE USED ON 0.063 INCH PANEL THICKNESS. OTHERWISE 2 THIN WASHERS (PANEL WASHERS) ARE REQUIRED FOR EACH POST. USE PART D-659-0042.

TABLE I (MODIFICATIONS)

MODIFICATION DASH NUMBER	DESCRIPTION
-022	SAME AS STANDARD ASSEMBLY, EXCEPT CONTACTS AND SEALING PLUGS ARE INCLUDED.
-023	SAME AS STANDARD ASSEMBLY, EXCEPT CONTACTS SEALING PLUGS AND INSERTION / EXTRACTION TOOL ARE INCLUDED.

CUSTOMER DRAWING

DWG. NO.	REV
MTC100Q-SHX-X2X-XXX	J
OLD FILE: MTC100Q-SHX-X2X-XXX	SHEET 2 OF 3

4

3

2

1

DRAWING NO. MTC100Q-SHX-X2X-XXX SHEET 2

A

D

C

B

A

THE FOLLOWING TABLE CONSISTS OF WEIGHTS FOR THESE SPECIFIC PART NUMBERS.

PART NUMBER	WEIGHT MAXIMUM GRAMS
MTC100Q-SH1-F22	29.9
MTC100Q-SH1-P22	29.5
MTC100Q-SH1-R22	26.2
MTC100Q-SH2-F22	40.5
MTC100Q-SH2-P22	39.7
MTC100Q-SH2-R22	36.4
MTC100Q-SH1-F23	19.0
MTC100Q-SH1-P23	21.9
MTC100Q-SH1-R23	18.6
MTC100Q-SH2-F23	28.9
MTC100Q-SH2-P23	28.1
MTC100Q-SH2-R23	24.7

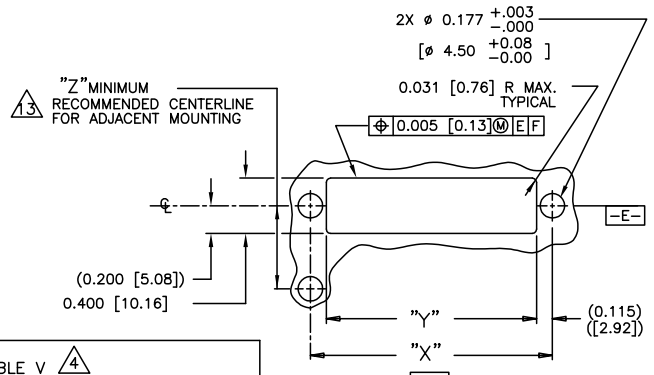
ITEM	PART NUMBER	USED WITH SHELL SIZE	TYPE	DUCT CAP MATERIAL	
				POLYETHYLENE RED	ELECTROSTATIC PINK
1	D-659-0060	1"	PLUG	X	
2	D-659-0062	2"	PLUG	X	
3	CHA-1603	1"	RECEPTACLE	X	
4	CHA-1604	2"	RECEPTACLE	X	
5	CHA-0098	1"	PLUG		X
6	CHA-0100	2"	PLUG		X
7	CHA-0311	1"	RECEPTACLE		X
8	CHA-0312	2"	RECEPTACLE		X

PANEL THICKNESS	NUMBER OF PANEL WASHERS FOR EACH FASTENER
0	2
0.031/0.036 [0.8]/[0.9]	1
0.062/0.067 [1.5]/[1.7]	0

	-A A-	
	-A B-	
	-A C-	
	-A D-	
	-B A-	
	-B B-	
	-B C-	
	-B D-	
	-C A-	
	-C B-	
	-C C-	
	-C D-	
	-D A-	
	-D B-	
	-D C-	
	-D D-	

RECEPTACLE FACE PLUG FACE

WHEN USING STANDARD
RECTANGULAR KEYING PINS



RECOMMENDED PANEL CUT-OUT 
FIGURE 1

CONNECTOR SIZE	TYPE:	"X"	"Y"	"Z" (MIR)
1 INCH	FLANGELESS	1.750 [44.5]	1.520 [38.6]	0.400 [10.16]
	FLANGED	1.750 [44.5]	1.520 [38.6]	0.600 [15.24]
2 INCH	FLANGELESS	2.750 [69.9]	2.520 [64.0]	0.400 [10.16]
	FLANGED	2.750 [69.9]	2.520 [64.0]	0.600 [15.24]

© 2006-2009 Tyco Electronics Corporation.
All rights reserved.

CUSTOMER DRAWING

DWG. NO. MTC100Q-SHX-X2X-XXX	REV J
Dwg. No. MTC100Q-SHX-X2X-XXX SHEET 3 OF 3	

Dwg. No. MTC100Q-SHX-X2X-XXX SHEET 3