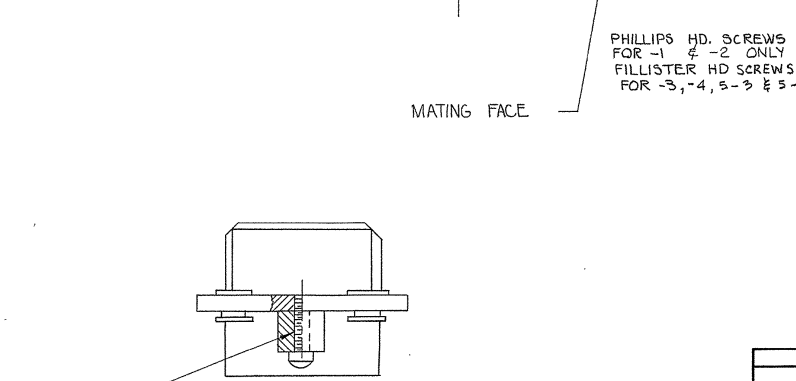
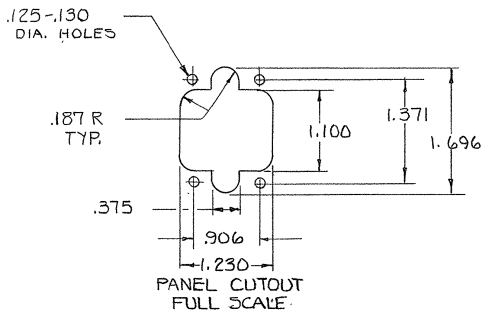
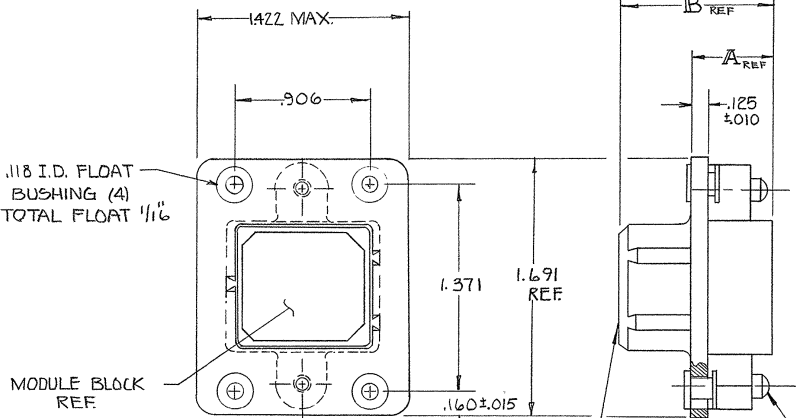


© 1965 BY AMP INCORPORATED. ALL RIGHTS RESERVED. AMP PRODUCTS COVERED BY PATENTS AND/OR PATENTS PENDING. APPROVED PER GOVT CONTRACT NO.

ZONE	LTR	DESCRIPTION	DATE	APPROVED
G		REDRAWN WITHOUT CHANGE ECN 7128	12-7-66	
H		REVISE SHEET TOLERANCE PER ECN 2-632	7-15-68	WJ/JAD
H		REV. PER ECN D-644	9-17-72	
J		REV. ECN H-220	8-14-80	EC
K		ADD -5 REV. PER ECN R-1135	3-21-81	SM/A
L		OBSOLETE -1 PER ECN R-2604	2-19-81	SDG/JCS
M		REV PER ECD-05-001412	05/05	AA/DE
N		REV PER ECD-05-005359	11-14-09	PV/DE



SUPERSEDED BY 5-202275-3
SUPERSEDED BY 5-202275-4

ASS'Y NO.	FINISH	A	B
202275-1	OLIVE DRAB ZINC PLATE PER ASTM-B-633 TYPE II CLASS 3 COLORLESS SUPPLEMENTARY CHROMATE	.480	1.010
202275-2	OLIVE DRAB ZINC PLATE PER ASTM-B-633 CLASS 3 TYPE II	.480	1.010
202275-3	PLATED ZINC PER ASTM-B-633 TYPE II CLASS 3 COLORLESS SUPPLEMENTARY CHROMATE	.480	1.010
202275-4	FINISH SAME AS -3	.886	1.416
202275-5	CADMIUM PLATE W/YELLOW CHROMATE CONVERSION PER QQ-P-416, TYPE III, CLASS 3	.480	1.010
5-202275-3	FINISH: PLATED ELECTROLESS NICKEL PER SAE-AMS-C-26074 .000400-.000800 THK (NO INTENTIONAL ADDITIONS OF LEAD OR CHROMIUM PER SPE STD 220-700)	.480	1.010
5-202275-4	FINISH: PLATED ELECTROLESS NICKEL PER SAE-AMS-C-26074 .000400-.000800 THK (NO INTENTIONAL ADDITIONS OF LEAD OR CHROMIUM PER SPE STD 220-700)	.886	1.416

ZINC PLATED STEEL SCREW (2) FOR -1 THRU -5
PASSIVATED STAINLESS STEEL SCREW (2) FOR 5-3 & 5-4

AMP INFO
LOC PRINT DIST
R 31 N 5058

UNLESS OTHERWISE SPECIFIED DIMENSIONS ARE IN INCHES TOLERANCES ON		CONTRACT NO.		AMP INCORPORATED HARRISBURG, PENNSYLVANIA	
FRACTIONS 3/16	DECIMALS ±.005	ANGLES ± 1/4	DR RO Baker	DATE 11-27-66	AMP TRADEMARK
MATERIAL SHELL-DIE CAST ALUMINUM	HEAT TREAT H	FINISH SEE TABLE	CHK S. Hester	DATE 9/2/66	NAME SERIES "G" PLUG ASSEMBLY MODULE (ONE BLOCK) WITH FLOATING BUSHINGS
DESIGN APPR J. J. Kelly	OTHER APPR	SIZE C	CODE IDENT NO 00779	NUMBER 202275	SCALE 2:1
				SHEET 1 OF 1	

CUSTOMER DRAWING