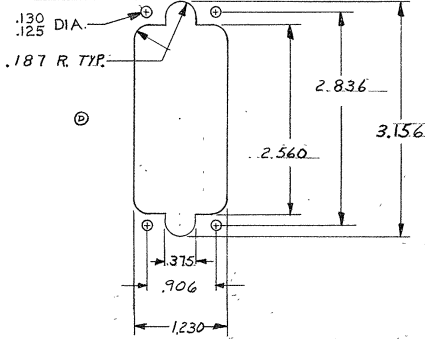
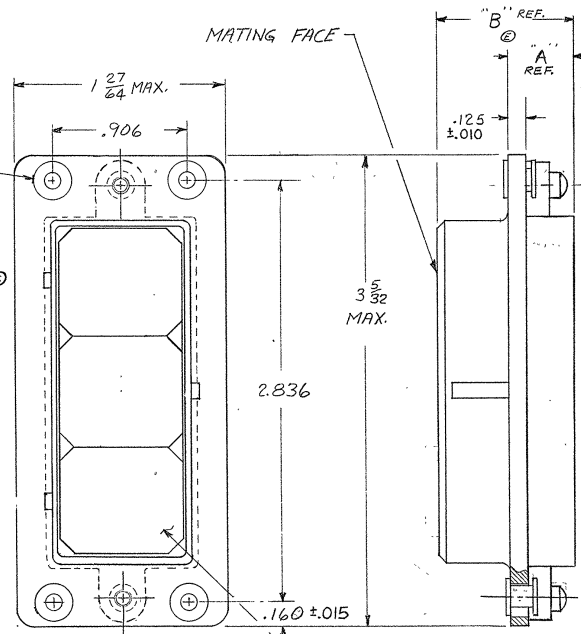


© 1963 BY AMP INCORPORATED. ALL RIGHTS RESERVED. AMP PRODUCTS COVERED BY PATENTS AND/OR PATENTS PENDING.

REVISIONS				REVISIONS				
SYM	DESCRIPTION	DATE	APP	SYM	ZONE	DESCRIPTION	DATE	APPROVAL
M	REV PER ECO-05-005359	11-14-63	PY/DE	O		RELEASED	7-11-63	JL
A	REVISED	U-415		A		REVISED	12-11-63	JF
B	REVISED	U-687		B		REVISED	2-26-64	JF
C	REVISED	V-196		C		REVISED	6-30-64	RM
D	REVISED	V-249		D		REVISED	1-27-65	JH
E	REVISED	W-529 W-421		E		REVISED	8-2-5	DM
F	REVISED	W-777		F		REVISED	10-14-65	JH
G	REVISED	Y-296		G		REVISED	3-22-66	JH
H	REV PER ECN D-644			H		REV PER ECN H-220	7-17-66	JH
J	OBsolete - 2 PER ECN H-916			J		OBsolete - 2 PER ECN H-916	7-30-61	A.F.H.
K	ADD - 5 & REV. PER ECN R-1135			K		ADD - 5 & REV. PER ECN R-1135	3-21-65	J.M.
L	REV PER ECO-02-001412			L		REV PER ECO-02-001412	8-27-65	JH

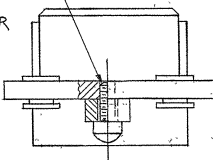


PANEL CUTOUT FULL SCALE

SUPERSEDED BY 5-202283-3  
 SUPERSEDED BY 5-202283-4

ASSY. NO.	"A"	"B"	FINISH
5-202283-4	.886	1.416	FINISH: PLATED ELECTROLESS NICKEL PER SPE-AMS-C-26074 .000400-.000800 THK (NO INTENTIONAL ADDITIONS OF LEAD OR CADMIUM PER DFE STD 230-700)
5-202283-3	.480	1.010	FINISH: PLATED ELECTROLESS NICKEL PER SPE-AMS-C-26074 .000400-.000800 THK (NO INTENTIONAL ADDITIONS OF LEAD OR CADMIUM PER DFE STD 230-700)
202283-1	.480	1.010	ZINC PLATE PER ASTM-B-685 TYPE II CLASS 3 COLORLESS SUPPLEMENTARY CHROMATE
202283-2	.480	1.010	OLIVE DRAB ZINC PLATE PER ASTM-B-685 CLASS 3 TYPE II
202283-3	.480	1.010	FINISH SAME AS -1
202283-4	.886	1.416	FINISH SAME AS -1
202283-5	.480	1.010	CADMIUM PLATE W/YELLOW CHROMATE CONVERSION PER QQ-P-416 TYPE II, CLASS 3

ZINC PLATED STEEL SCREW(2)  
 PHILLIPS HEAD FOR  
 -1 AND -2 ONLY  
 FILLISTER HEAD FOR  
 -3, -A, S-3 & S-4



AMP INFO LOC PRINTOUT R 39 M	QTY REQD	NOMENCLATURE OR DESCRIPTION	PART OR IDENTIFYING NO	LIST OF MATERIALS OR PARTS LIST
UNLESS OTHERWISE SPECIFIED DIMENSIONS ARE IN INCHES TOLERANCES ON FRACTIONS DECIMALS ANGLES ± 1/4 ± .005 ± .01		SIGNATURE	DATE	AMP INCORPORATED HARRISBURG, PENNSYLVANIA
MATERIAL SHELL - DIE CAST ALLUMINUM		DR [Signature]	2-26-63	NAME
HEAT TREAT		CHK [Signature]	4-18-63	PLUG ASSEMBLY, MODULE @ SERIES "G"
FINISH SEE TABLE		DRGN ENGR [Signature]	5-26-63	CODE IDENT NO 00779
		OTHER APPD		SIZE C NUMBER 202283
				SCALE 2-1 WT CALC ACTUAL SHEET 1 OF 1

CUSTOMER DRAWING 1