


4

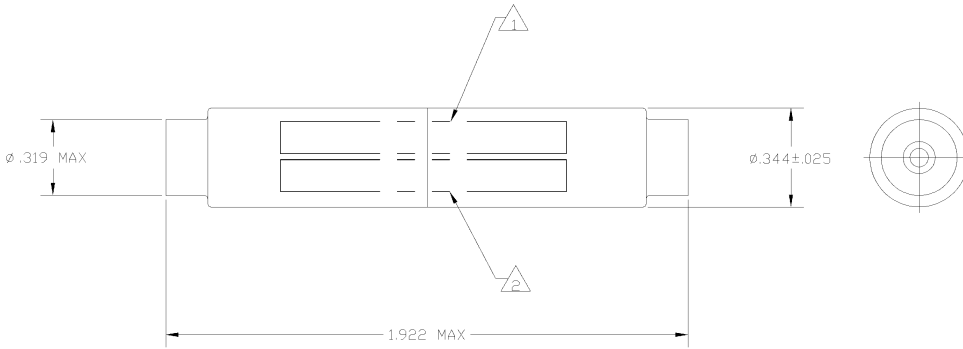
3







2






1

THIS DRAWING IS UNPUBLISHED		RELEASED FOR PUBLICATION	
COPYRIGHT BY TYCO ELECTRONICS CORPORATION. ALL RIGHTS RESERVED.			
DESCRIPTION	MATERIAL	FINISH	
GROMMET	FLUOROSILICONE 40/50 BLEND PER MIL-R-25988	COLOR: BLUE	
SPLICE ASSEMBLY HOUSING	EPOXY	COLOR: BLACK	
CONTACT FEMALE SOCKET	BERYLLIUM COPPER PER QQ-C-533	GOLD PLATE PER MIL-G-45204	
CLIP CONTACT RETAINING	BERYLLIUM COPPER PER QQ-C-533 OR STAINLESS STEEL PER QQ-S-766	NONE	
TUBE SHRINK	PER MIL-1-23053/8	COLOR TRANSPARENT	
CONTACTS 	COPPER ALLOY PER QQ-B-750	GOLD PLATE PER MIL-G-45204	

LOC	DIST	REVISIONS					
DF	AO	P	LTR	DESCRIPTION	DATE	BY	APPD
		E		REV PER 063D-00B3-01	07NOV01	MB	DM




-  A QUANTITY OF 2 CONTACTS ARE SUPPLIED WITH WIRE SPLICE.
-  PART NO. 592583-4 IS MARKED WITH MILITARY PART NO. M81714/11-22D.
.060 MINIMUM HIGH CHARACTERS AT APPROXIMATE AREA SHOWN.
-  PART NO. 592583-3 IS MARKED WITH MILITARY PART NO. M81714/11-20D.
.060 MINIMUM HIGH CHARACTERS AT APPROXIMATE AREA SHOWN.
-  PART NO. 592583-2 IS MARKED WITH MILITARY PART NO. M81714/11-16D.
.060 MINIMUM HIGH CHARACTERS AT APPROXIMATE AREA SHOWN.
-  PART NO. 592583-1 IS MARKED WITH MILITARY PART NO. M81714/11-12D.
.060 MINIMUM HIGH CHARACTERS AT APPROXIMATE AREA SHOWN.
-  MARK WIRE SPLICE WITH "AMP", AMP PART NO. AND DATE CODE
.060 MINIMUM HIGH CHARACTERS AT APPROXIMATE AREA SHOWN.

	SIZE 20/22	592583-7
—	SIZE 20/22	592583-6
—	SIZE 16	592583-5
	SIZE 20/22	592583-4
	SIZE 20/22	592583-3
	SIZE 16	592583-2
	SIZE 12	592583-1

SUPERSEDED BY -7

REMARKS	DESCRIPTION	PART NO.
	WIRE SPLICE, SINGLE SIZE 12, 20/22 ASSEMBLY TJ	

THIS DRAWING IS A CONTROLLED DOCUMENT.		DN J. MECK	04-10-99	 Tyco Electronics Corporation Harrisburg, PA 17105
DIMENSIONS: INCHES		CHK S. RYAN	05-12-99	
D PLE 1 - - D PLE 2 - - D PLE 3 - .00 D PLE 4 - . - H PLE 1 - . - H PLE 2 - . -		APPD S. RYAN	09-12-99	NAME
MATERIAL FINISH		PRODUCT SPEC APPLICATION SPEC WEIGHT		WIRE SPLICE, SINGLE SIZE 12, 20/22 ASSEMBLY TJ SIZE CASE CODE DRAWING NO A200779C=592583
		CUSTOMER DRAWING	SCALE 4:1	RESTRICTED TO SHEET 1 OF 3 REV B

AMP 1471-9 REV 31MAR2000

D:\ENGapps\TECworker\jobs\snr\y038a\19013\592583_1_c.dwg

592583


A

4

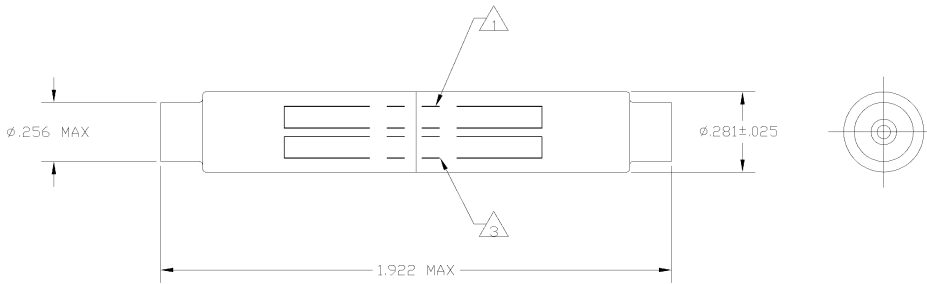
3


2

1

THIS DRAWING IS UNPUBLISHED		RELEASED FOR PUBLICATION	
COPYRIGHT BY TYCO ELECTRONICS CORPORATION		ALL RIGHTS RESERVED	
DESCRIPTION	MATERIAL	FINISH	
GROMMET	FLUOROSILICONE 40/50 BLEND PER MIL-R-25988	COLOR: BLUE	
SPLICE ASSEMBLY HOUSING	EPOXY	COLOR: BLACK	
CONTACT FEMALE SOCKET	BERYLLIUM COPPER PER QQ-C-533	GOLD PLATE PER MIL-G-45204	
CLIP CONTACT RETAINING	BERYLLIUM COPPER PER QQ-C-533 OR STAINLESS STEEL PER QQ-S-766	NONE	
TUBE SHRINK	PER MIL-1-23053/8	COLOR TRANSPARENT	
CONTACTS 	COPPER ALLOY PER QQ-B-750	GOLD PLATE PER MIL-G-45204	

LOC	QTY	REVISIONS				
DF	AO	P	LR	DATE	BY	APPD
-	-	-	-	SEE SHEET 1	-	-



THIS DRAWING IS A CONTROLLED DOCUMENT.		DRW	J. MECK	04-10-99	AMP Tyco Electronics Corporation Harrisburg, PA 17105
DIMENSIONS: INCHES		CHK	R. RYAN	09-12-99	
	D. FILE	1	-	NAME	WIRE SPLICE, SINGLE SIZE 12, 20/22 ASSEMBLY TJ
	D. FILE	2	-	PROJECT SPEC	
	D. FILE	3	-	APPLICATION SPEC	SIZE
	D. FILE	4	-	WEIGHT	CASE CODE
MATERIAL	FINISH	-	-	DRAWING NO.	RESTRICTED TO
CUSTOMER DRAWING				A200779	C=592583
				SCALE	4:1
				SHEET	2 OF 3
				REV	B

AMP 1471-9 REV 31MAR2000

D:\ENGGapps\TECworker\jobs\msrv038a\19013\592583_2_c.dwg

592583

A

4


3

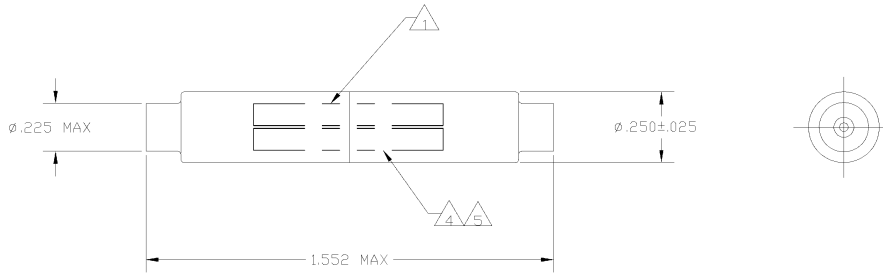
2

1

THIS DRAWING IS UNPUBLISHED
 BY TYCO ELECTRONICS CORPORATION. ALL RIGHTS RESERVED.

LOC	DATE	BY	DESCRIPTION	DATE	BY	APP'D
DF	AO		SEE SHEET 1	-	-	-

DESCRIPTION	MATERIAL	FINISH
GROMMET	FLUOROSILICONE 40/50 BLEND PER MIL-R-25988	COLOR: BLUE
SPLICE ASSEMBLY HOUSING	EPOXY	COLOR: BLACK
CONTACT FEMALE SOCKET	BERYLLIUM COPPER PER QQ-C-533	GOLD PLATE PER MIL-G-45204
CLIP CONTACT RETAINING	BERYLLIUM COPPER PER QQ-C-533 OR STAINLESS STEEL PER QQ-S-766	NONE
TUBE SHRINK	PER MIL-1-23053/8	COLOR TRANSPARENT
CONTACTS 	COPPER ALLOY PER QQ-B-750	GOLD PLATE PER MIL-G-45204



THIS DRAWING IS A CONTROLLED DOCUMENT.		DWN J. MECK 04-10-99 CHK R. RYAN 05-12-99 DATE 09-12-99 NAME RYAN	AMP Tyco Electronics Corporation Harrisburg, PA 17105
DIMENSIONS: INCHES 0 P.L.C. ± .0005 1 P.L.C. ± .0005 2 P.L.C. ± .0005 3 P.L.C. ± .0005 4 P.L.C. ± .0005 5 P.L.C. ± .0005 6 P.L.C. ± .0005 7 P.L.C. ± .0005 8 P.L.C. ± .0005 9 P.L.C. ± .0005 10 P.L.C. ± .0005 11 P.L.C. ± .0005 12 P.L.C. ± .0005 13 P.L.C. ± .0005 14 P.L.C. ± .0005 15 P.L.C. ± .0005 16 P.L.C. ± .0005 17 P.L.C. ± .0005 18 P.L.C. ± .0005 19 P.L.C. ± .0005 20 P.L.C. ± .0005 21 P.L.C. ± .0005 22 P.L.C. ± .0005 23 P.L.C. ± .0005 24 P.L.C. ± .0005 25 P.L.C. ± .0005 26 P.L.C. ± .0005 27 P.L.C. ± .0005 28 P.L.C. ± .0005 29 P.L.C. ± .0005 30 P.L.C. ± .0005 31 P.L.C. ± .0005 32 P.L.C. ± .0005 33 P.L.C. ± .0005 34 P.L.C. ± .0005 35 P.L.C. ± .0005 36 P.L.C. ± .0005 37 P.L.C. ± .0005 38 P.L.C. ± .0005 39 P.L.C. ± .0005 40 P.L.C. ± .0005 41 P.L.C. ± .0005 42 P.L.C. ± .0005 43 P.L.C. ± .0005 44 P.L.C. ± .0005 45 P.L.C. ± .0005 46 P.L.C. ± .0005 47 P.L.C. ± .0005 48 P.L.C. ± .0005 49 P.L.C. ± .0005 50 P.L.C. ± .0005 51 P.L.C. ± .0005 52 P.L.C. ± .0005 53 P.L.C. ± .0005 54 P.L.C. ± .0005 55 P.L.C. ± .0005 56 P.L.C. ± .0005 57 P.L.C. ± .0005 58 P.L.C. ± .0005 59 P.L.C. ± .0005 60 P.L.C. ± .0005 61 P.L.C. ± .0005 62 P.L.C. ± .0005 63 P.L.C. ± .0005 64 P.L.C. ± .0005 65 P.L.C. ± .0005 66 P.L.C. ± .0005 67 P.L.C. ± .0005 68 P.L.C. ± .0005 69 P.L.C. ± .0005 70 P.L.C. ± .0005 71 P.L.C. ± .0005 72 P.L.C. ± .0005 73 P.L.C. ± .0005 74 P.L.C. ± .0005 75 P.L.C. ± .0005 76 P.L.C. ± .0005 77 P.L.C. ± .0005 78 P.L.C. ± .0005 79 P.L.C. ± .0005 80 P.L.C. ± .0005 81 P.L.C. ± .0005 82 P.L.C. ± .0005 83 P.L.C. ± .0005 84 P.L.C. ± .0005 85 P.L.C. ± .0005 86 P.L.C. ± .0005 87 P.L.C. ± .0005 88 P.L.C. ± .0005 89 P.L.C. ± .0005 90 P.L.C. ± .0005 91 P.L.C. ± .0005 92 P.L.C. ± .0005 93 P.L.C. ± .0005 94 P.L.C. ± .0005 95 P.L.C. ± .0005 96 P.L.C. ± .0005 97 P.L.C. ± .0005 98 P.L.C. ± .0005 99 P.L.C. ± .0005 100 P.L.C. ± .0005	PROJECT SPEC APPLICATION SPEC WEIGHT	SIZE CASE CODE DRAWING NO. A2 00779 C-592583	RESTRICTED TO CUSTOMER DRAWING
SCALE 4:1		SHEET 3 OF 3	