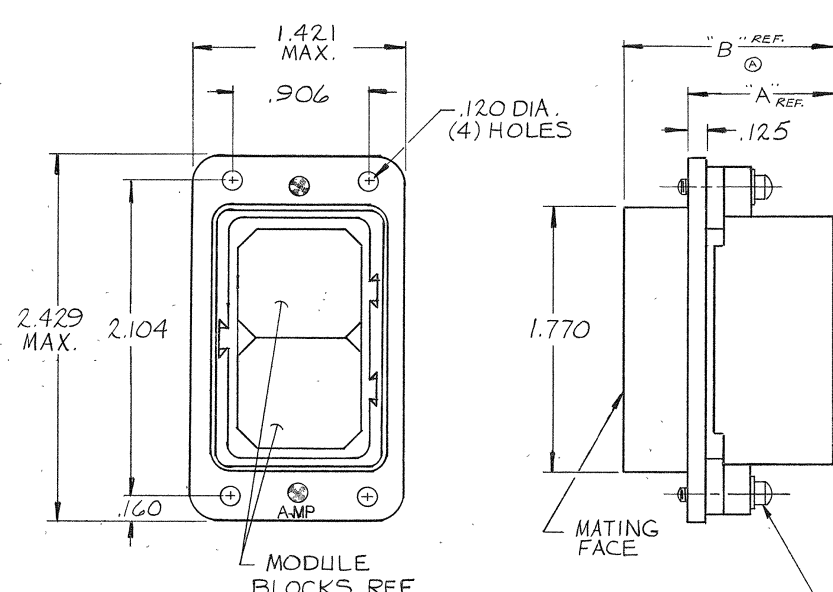


© 1974 BY AMP INCORPORATED. ALL RIGHTS RESERVED. AMP PRODUCTS COVERED BY PATENTS AND/OR PATENTS PENDING. APPROVED PER GOVT. CONTRACT NO.

202681

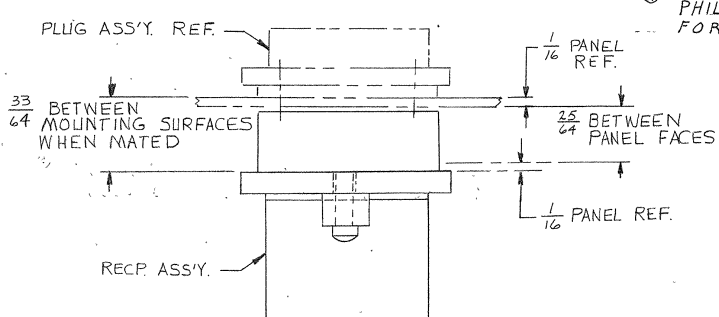
Impressions 009 2770 10  
without written permission

| REVISIONS |      |                        |          |             |
|-----------|------|------------------------|----------|-------------|
| SYM       | ZONE | DESCRIPTION            | DATE     | APPROVAL    |
| O         |      | RELEASED WAS N5012-296 | 9-30-64  | 1028 J.S.H. |
| A         |      | REVISED W-421 W-524    | 8-2-5    | m.s. DM     |
| B         |      | REVISED W-777          | 10-14-5  | m.s. D.H.   |
| C         |      | REV. PER ECN 2877/161  | 11-21-62 | DM          |
| D         |      | REVISED D576           | 2-24-70  | K4          |
| E         |      | REV. / ECN H-220       | 8-14-80  | DL          |
| F         |      | REV. / ECN R-1648      | 11-11-85 | MPH         |
| G         |      | REV PER DF-2235        | 7-11-89  | MPH         |
| H         |      | REV PER DF-2547        | 12-8-89  | MPH         |
| J         |      | REV PER ELD-02-021412  | 05/05    | DL          |
| K         |      | REV PER ECO-05-005359  | 11/05    | PI/05       |



- 202681-1. 1. AS SHOWN
- 202681-2. 1. SAME AS -1 EXCEPT:  
2. FILLISTER HEAD SCREWS
- 202681-3. 1. SAME AS -2 EXCEPT:  
2. "A" AND "B" DIMENSIONS.
- 202681-4. 1. SAME AS -3 EXCEPT:  
2. HARDWARE IS NON-MAG. SST.
- 5-202681-2. 1. SAME AS -2 EXCEPT:  
2. PLATING
- 5-202681-3. 1. SAME AS -3 EXCEPT:  
2. PLATING

NOTE:  
 1. ZINC PLATE PER ASTM-B-633 CLASS 2 COLORLESS SUPPLEMENTARY CHROMATE.  
 2. PLATED ELECTROLESS NICKEL PER SAE-AMS-C-26074 .000400-.000800 THK (NO INTENTIONAL DEPOSITIONS OF LEAD OR CADMIUM PER DFE STD 230-700).



| REV        | DATE  | BY    | CHKD | APPROV |
|------------|-------|-------|------|--------|
| 5-202681-3 | .595  | 1.103 |      | △      |
| 5-202681-2 | 1.001 | 1.509 |      | △      |
| 202681-4   | .595  | 1.103 |      | △      |
| 202681-3   | .595  | 1.103 |      | △      |
| 202681-2   | 1.001 | 1.509 |      | △      |
| 202681-1   | 1.001 | 1.509 |      | △      |

|                                                                                          |                                        |                                          |                                 |                                              |
|------------------------------------------------------------------------------------------|----------------------------------------|------------------------------------------|---------------------------------|----------------------------------------------|
| AMP INFO<br>LOC: JBC                                                                     | SYMBOLS<br>NOMENCLATURE OR DESCRIPTION | PART OR IDENTIFYING NO<br>"A" "B" FINISH | LIST OF MATERIALS OR PARTS LIST |                                              |
| OTHERWISE SPECIFIED<br>DIMENSIONS ARE IN INCHES<br>FRACTIONS DECIMALS ANGLES<br>= .005 ° |                                        | SIGNATURE<br>K. Jones                    | DATE<br>9/18/65                 | AMP INCORPORATED<br>HARRISBURG, PENNSYLVANIA |
| MATERIAL<br>DIE CAST ALUMINUM                                                            | HEAT TREAT<br>1-1                      | CHKD<br>R. S. Hildebrand                 | DATE<br>1-11-65                 |                                              |
| FINISH<br>SEE NOTE 1                                                                     | OTHER APPD                             | DSGN APPD                                | CODE IDENT NO<br>00779          | SIZE<br>C                                    |
| SCALE 2-1                                                                                |                                        |                                          | WT                              | CALC                                         |
|                                                                                          |                                        |                                          | ACTUAL                          | SHEET                                        |

2 CUSTOMER DRAWING