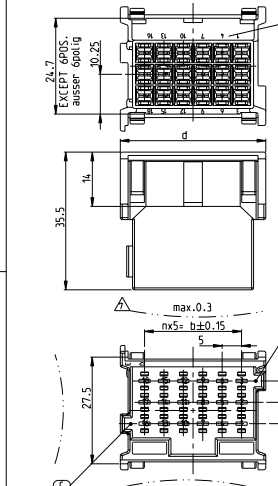
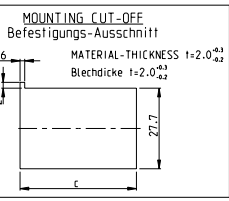
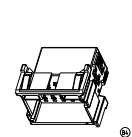
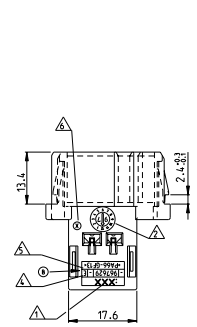


THIS DRAWING IS UNAPPROVED FOR THE PURPOSES OF PRODUCTION. IT IS THE PROPERTY OF THE COMPANY AND IS NOT TO BE REPRODUCED OR TRANSMITTED IN ANY FORM OR BY ANY MEANS, ELECTRONIC OR MECHANICAL, INCLUDING PHOTOCOPYING, RECORDING, OR BY ANY INFORMATION STORAGE AND RETRIEVAL SYSTEM.



1-967629-... CODING A (GROOVES B-C) AS SHOWN (Nuten B-C) wie gezeichnet



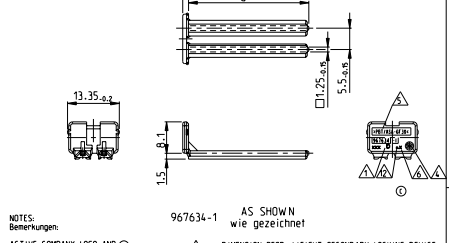
	10.7g	6	30	42.8	42.5	21	36	0.7g
	9.4g	5	25	37.8	37.5	18	31	0.65g
	8.3g	4	20	32.8	32.5	15	26	0.55g
	6.9g	3	15	27.8	27.5	12	21	0.5g
	5.8g	2	10	22.8	22.5	9	16	0.4g
	4.5g	1	5	17.8	17.5	6	11	0.35g

CODING A: CAVITY NUMBER (CAVITIES ONLY SYMBOL) Kodierung A: Kammernbezeichnung (Kammern nur symbol. dargestellt)

WEIGHT n Gew. n D<sub>max</sub> C<sup>max</sup> d<sub>max</sub> POSITIONS Polzahl a<sub>max</sub> WEIGHT Gewicht

REVISIONS

REV	DATE	DESCRIPTION	BY	CHK	APP
AI	-	INITIAL DRAWING	-	-	-
B1	28-04-07	REV. PART NUMBER	-	-	-
B2	21-SEP-07	REV. PART NUMBER	-	-	-
B3	14-SEP-07	REV. PART NUMBER	-	-	-
B4	06-SEP-07	REV. PART NUMBER	-	-	-
C	20-09-08	REV. PART NUMBER	-	-	-
C1	14-SEP-08	REV. PART NUMBER	-	-	-
C2	14-SEP-08	REV. PART NUMBER	-	-	-

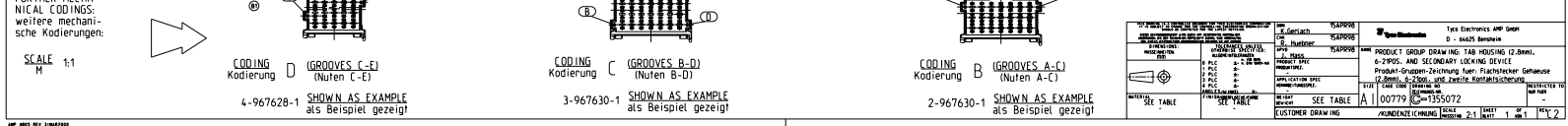


- NOTES
- ACTIVE COMPANY LOGO AND SINGLE PART NUMBER
  - PRODUCTION-DATE
  - CAVITY-MARKING
  - THE REVISION STATUS OF THE MOULD
  - MATERIAL-MARKING ACC. TO VDA 260
  - WARPAGE TO ... PERMITTED
- AS SHOWN wie gezeichnet
- a DIMENSION RESP. WEIGHT SECONDARY LOCKING DEVICE
  - PACKAGING: LOOSE PIECE IN CORRUGATED BOX FOR BOTH PARTS (INDIVIDUAL HOUSING IN PLASTIC BAG)
  - CAVITIES MATING WITH TAB-2.8mm
  - FUNCTIONALITY CAUSED BY LACQUER IS NOT COVERED BY WARRANTY
  - TOOL-NUMBERING

CODING / Kodierung D		CODING / Kodierung C		CODING / Kodierung B		CODING / Kodierung A		MECHANICAL CODING: mechanische Kodierung			
GROOVES / Nuten: C-E		GROOVES / Nuten: B-D		GROOVES / Nuten: A-C		GROOVES / Nuten: B-C					
967635-1	2	21	POS. pos.	1-967630-1	E	2-967630-1	E	1-967630-1	E	21	POS. pos.
967634-1	2	16	POS. pos.	1-967628-1	E	2-967628-1	E	1-967628-1	E	16	POS. pos.
967633-1	2	12	POS. pos.	1-967627-1	E	2-967627-1	E	1-967627-1	E	12	POS. pos.
967632-1	2	9	POS. pos.	1-967626-1	E	2-967626-1	E	1-967626-1	E	9	POS. pos.
968271-1	2	6	POS. pos.	1-965641-1	D	2-965641-1	D	1-965641-1	D	6	POS. pos.

SECONDARY LOCKING DEVICE Zweite Kontaktsicherung

TAB HOUSING / Flachstecker-Gehäuse



FURTHER MECHANICAL CODINGS: weitere mechanische Kodierungen:

SCALE 1:1

4-967628-1 SHOWN AS EXAMPLE als Beispiel gezeigt

3-967630-1 SHOWN AS EXAMPLE als Beispiel gezeigt

2-967630-1 SHOWN AS EXAMPLE als Beispiel gezeigt

PRODUCTION DRAWING: TAB HOUSING (2.8mm), 2-POS. AND SECONDARY LOCKING DEVICE

Produkt-Gruppen-Zeichnung fuer: Flachstecker-Gehäuse (2.8mm), 2-POS. und zweite Kontaktsicherung

SEE TABLE

CUSTOMER DRAWING: 00779 (S-1355072)