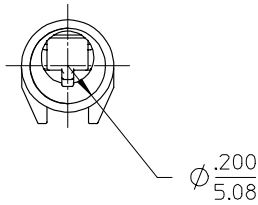
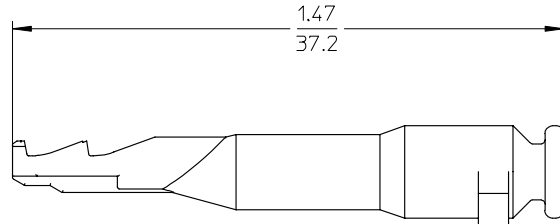
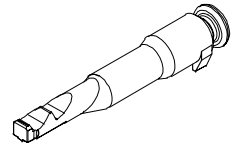


10 9 8 7 6 5 4 3 2 19431



NOTES:

1. GENERIC MATERIAL NAME: POLYBUTYLENE TEREPHTALATE
MATERIAL ABBREVIATION: PBT
COLOR: NATURAL
GLASS FILLED, UL94 V-0
2. PART IS DESIGNED TO BE USED ON 19432 SERIES RECEPTACLE ASSEMBLIES OR 19433 SERIES PLUG ASSEMBLIES.
3. PART IS PACKAGED 60 STRIPS OF 10 IN A 96707-0023 CARTON. (A)

DWG UPDATE EC NO: ETC2005-0223 DRAWN BY: BRUPERT CHECKED: JPAWLICK APPROVED BY: RDEROSS	DESCRIPTION 2005/09/01 2005/09/02 2005/09/06	QUALITY SYMBOLS	GENERAL TOLERANCES (UNLESS SPECIFIED)		DIMENSION STYLE IN/MM		SCALE 4:1	DESIGN UNITS INCH	THIRD ANGLE PROJECTION	
		▽=0 ▽=0	mm	INCH	DRAWN BY BRUPERT	DATE 2004/09/22	TITLE MX150 CIRCUIT PLUG 10-12,8AWG			
			4 PLACES ± --- ± ---	CHECKED BY JPAWLICK	DATE 2004/09/22	MOLEX INCORPORATED MATERIAL NO. 19431-0013 DOCUMENT NO. SD-19431-001				
			3 PLACES ± --- ± .010	APPROVED BY RDEROSS	DATE 2004/09/22					SHEET NO. 1 OF 1
	2 PLACES ± 0.26 ± .02	DRAFT WHERE APPLICABLE MUST REMAIN WITHIN DIMENSIONS		THIS DRAWING CONTAINS INFORMATION THAT IS PROPRIETARY TO MOLEX INCORPORATED AND SHOULD NOT BE USED WITHOUT WRITTEN PERMISSION						
	1 PLACE ± 0.5 ± ---									
		ANGULAR ± 1 °								
REV										

lb_frame_B_P_AH_T
Rev. D 2004/06/28

9 8 7 6 5 4 3 2 1