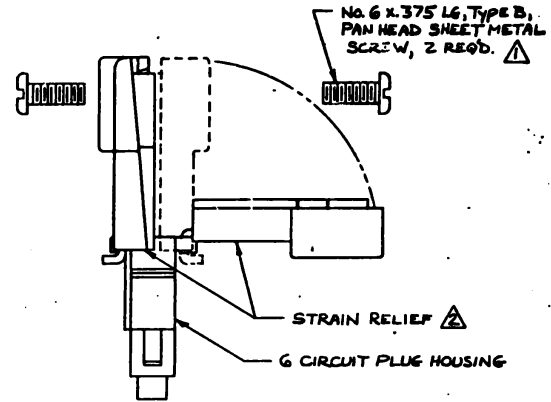
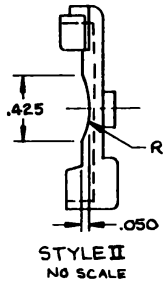
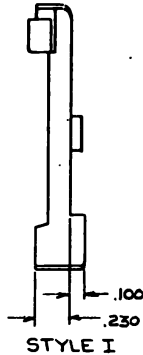
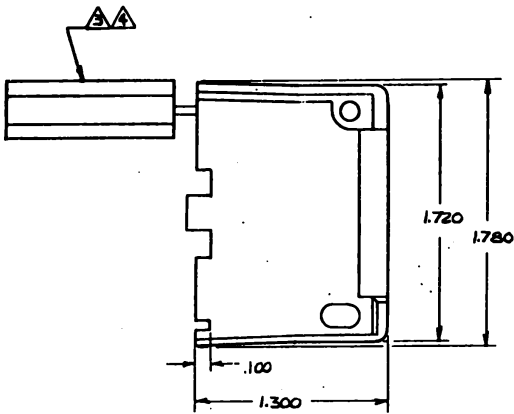
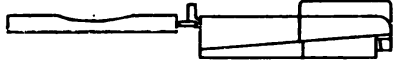


DRAWING MADE IN THIRD ANGLE PROJECTION

THIS DRAWING IS UNPUBLISHED. RELEASED FOR PUBLICATION 19
 COPYRIGHT IS BY AMP INCORPORATED, HARRISBURG, PA. ALL INTERNATIONAL RIGHTS RESERVED. AMP PRODUCTS MAY BE COVERED BY U.S. AND FOREIGN PATENTS AND/OR PATENTS PENDING.

| REVISIONS | | | | DATE | APPROVED |
|-----------|---|---|-----------------------------|----------|-------------|
| 0 | 0 | 0 | NYLON DURING PER TTI-65-153 | 10/28/63 | [Signature] |
| 1 | 0 | 0 | RESTORED | 11/25/63 | [Signature] |
| 2 | A | 0 | REV PER EGN CM 705 | 4/16/75 | [Signature] |



ASSEMBLY DETAILS

- ⚠ SHEET METAL SCREWS NOT SUPPLIED.
- ⚠ TWO REQUIRED PER CONNECTOR.
- ⚠ MAX WIRE BUNDLE WITHOUT INSERT IS 6 AT .190 DIA. AND MIN WIRE BUNDLE WITH INSERT IS 6 AT .040 DIA.
- ⚠ STYLE II DOES NOT INCLUDE INSERT.
- 5. DETACHABLE INSERT MAY SEPARATE FROM STRAIN RELIEF BODY DURING SHIPPING.

| MATERIAL | STYLE | COLOR | PART NO. |
|-----------|-------|---------|----------|
| NYLON94V2 | II | NATURAL | 643585-2 |
| NYLON94V2 | I | NATURAL | 643585-1 |

| | | | |
|--|--|---|-------------------|
| UNLESS OTHERWISE SPECIFIED DIMENSIONS ARE IN INCHES. TOLERANCES ON: DECIMALS ±.015 ANGLES 2 | CONTRACT NO | AMP AMP INCORPORATED Harrisburg, Pa. 17105 | |
| | DR <i>J. Whicker 10-31-63</i> CHK <i>S. Janku 11-2-63</i> | | |
| MATERIAL SEE TABLE | APPD <i>CE Quella 4/1/65</i> | STRAIN RELIEF AND INSERT, UNIVERSAL MATE-N-LOK™ G CIRCUIT. | |
| FINISH SEE TABLE | DOGN APPD | SIZE C | FSCM NO. 00779 |
| | OTHER APPD | DRAWING NO. 64-3585 | |
| | | SCALE 2:1 | SHEET 1 OF 1 |

CUSTOMER DRAWING