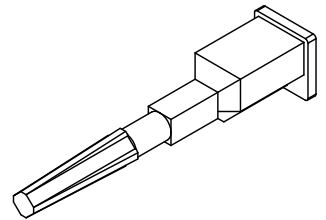


PART NO.	ENG. NO.	MATERIAL (SEE NOTE 1)	COLOR (SEE NOTE 1)
15-04-0211	42232-BA	B	A

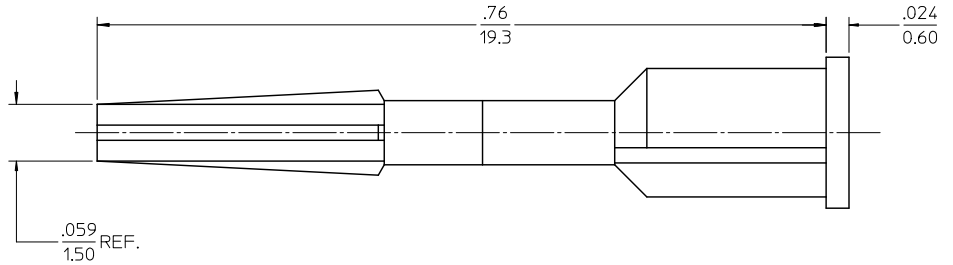
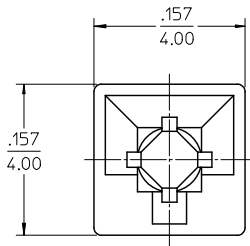
LEGEND

42232-**

BASE NO.
MATERIAL
COLOR



ISO VIEW
SCALE 5:1



- NOTES:
1. MATERIAL: "B"=NYLON 6/6, UL 94V-0; COLOR: "A"=NATURAL
 2. FINISH: NONE
 3. PRODUCT SPECIFICATION: NONE
 4. PACKAGING: PK-42232-001.
 5. THIS PART FOR USE WITH MOLEX RECEPTACLE NO. 5557, 30067 AND 42474.
 6. KEY TO BE INSERTED FROM WIRE ENTRY SIDE OF RECEPTACLE HOUSING.
 7. PART CONFORMS TO CLASS "B" REQUIREMENTS OF COSMETIC SPECIFICATION PS-45499-002.

ADDED PK-42232-001 EC NO: UCP2010-2159 DRAWN: JAGUILAR 2010/02/25 CHKD: BELL 2010/02/25 APPR: FSMITH 2010/03/08 C1 REV	QUALITY SYMBOLS ▽=0 ▽=0	GENERAL TOLERANCES (UNLESS SPECIFIED)		DIMENSION STYLE IN/MM	SCALE 10:1	DESIGN UNITS METRIC	THIRD ANGLE PROJECTION
		4 PLACES ± --- ± --- 3 PLACES ± --- ± .010 2 PLACES ± 0.25 ± .015 1 PLACE ± 0.38 ± --- ANGULAR ± 1/2°	DRAWN BY GEP DATE 1992/03/31	TITLE POLARIZING KEY FOR MINI-FIT JR. SERIES RECEPTACLE			
		DRAFT WHERE APPLICABLE MUST REMAIN WITHIN DIMENSIONS		APPROVED BY FSMITH DATE 2010/03/08	MOLEX MOLEX INCORPORATED		
		SEE CHART		MATERIAL NO.	DOCUMENT NO. SD-42232-**	SHEET NO. 1 OF 1	
		THIS DRAWING CONTAINS INFORMATION THAT IS PROPRIETARY TO MOLEX INCORPORATED AND SHOULD NOT BE USED WITHOUT WRITTEN PERMISSION					