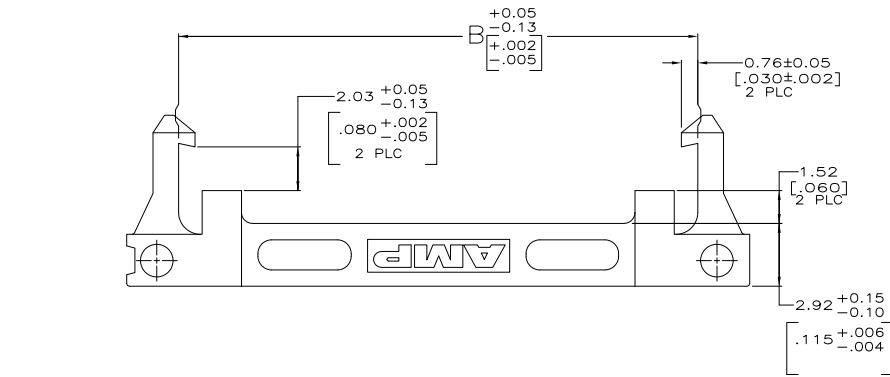
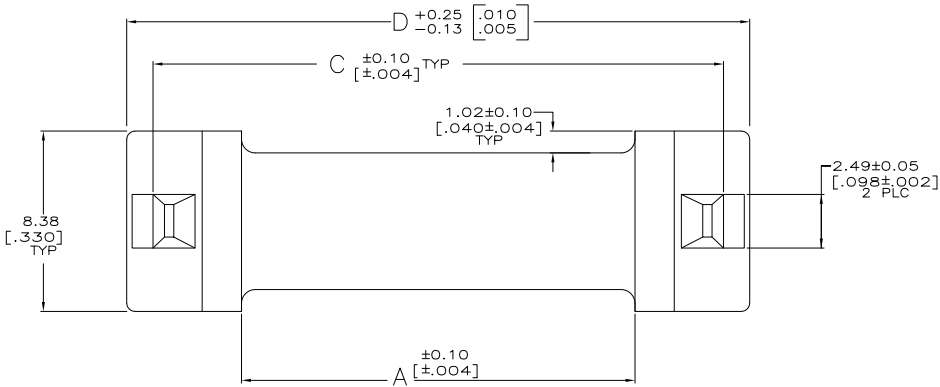


THIS DRAWING IS UNPUBLISHED. RELEASED FOR PUBLICATION. ALL RIGHTS RESERVED.

REV	DATE	DESCRIPTION	BY	APPD
00				
L2	REVISED PER ECO-11-004835		11MAR11	RK HMR



92.46	90.17	88.04	81.79	64	1-111547-3
3.640	3.550	3.466	3.220	60	1-111547-2
87.38	85.09	82.96	76.71	50	1-111547-1
3.440	3.350	3.266	3.020	44	1-111547-0
74.68	72.39	70.26	64.01	40	111547-9
2.940	2.850	2.766	2.520	34	111547-8
67.06	64.77	62.64	56.39	30	111547-7
2.640	2.550	2.466	2.220	26	111547-6
61.98	59.69	57.56	51.31	24	111547-5
2.440	2.350	2.266	2.020	20	111547-4
54.36	52.07	49.94	43.69	16	111547-3
2.140	2.050	1.966	1.720	14	111547-2
49.28	46.99	44.86	38.61	10	111547-1
1.940	1.850	1.766	1.520		
44.20	41.91	39.78	33.53		
1.740	1.650	1.566	1.320		
41.66	39.37	37.24	30.99		
1.640	1.550	1.466	1.220		
36.58	34.29	32.16	25.91		
1.440	1.350	1.266	1.020		
31.50	29.21	27.08	20.83		
1.240	1.150	1.066	.820		
28.96	26.67	24.54	18.29		
1.140	1.050	.966	.720		
23.88	21.59	19.46	13.21		
.940	.850	.766	.520		
D	C	B	A	NO OF POSN	PART NUMBER

THIS DRAWING IS A CONTROLLED DOCUMENT. **TE Connectivity**

DIMENSIONS: (MM(INCHES)) 0 PLC ± - 1 PLC ± - 2 PLC ± 0.1X(.005) 3 PLC ± - 4 PLC ± - ANGLES - ± -	TOLERANCES UNLESS OTHERWISE SPECIFIED: DIM: H. MOLL 10-23-90 DR: B. STONE 11-7-90 APPR: F.M. HEINLEY 11-7-90 PRODUCT SPEC: 108-1336 APPLICATION SPEC: 114-7011 WEIGHT: - FINISH: -	STRAIN RELIEF, UNIVERSAL PIN CONNECTOR, AMP-LATCH SIZE: A2 CASE CODE: 00779 DRAWING NO: 111547 SCALE: 8:1 SHEET: 1 of 1 REV: L2	PART NO: 111547
--	---	---	-----------------

MATERIAL: GLASS FILLED POLYESTER, BLACK. CUSTOMER DRAWING.