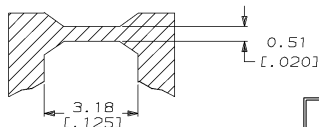
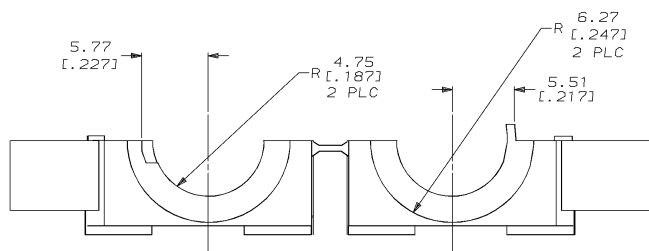
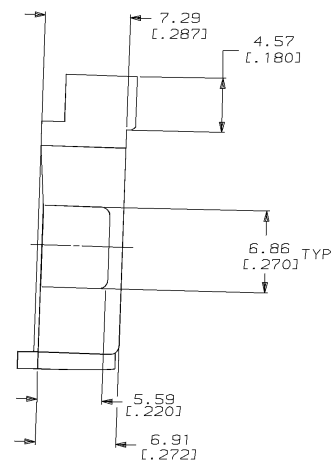
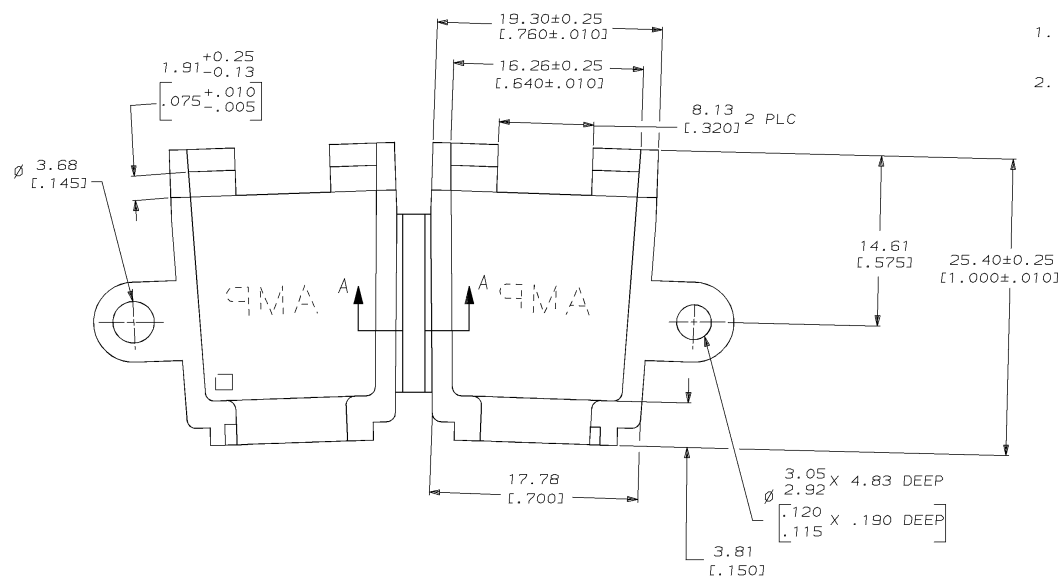


DRAWING MADE IN THIRD ANGLE PROJECTION  
THIS DRAWING IS UNPUBLISHED.  
© COPYRIGHT 19 BY AMP INCORPORATED. ALL INTERNATIONAL RIGHTS RESERVED.

REVISIONS									
LOC	DIST	P	F	ZONE	LTR	DESCRIPTION	DATE	APPD	KS
CM	52					K REV & REDWN PER EC 0730-0072-94	5-3-93		RS

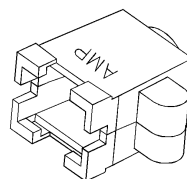
- REQUIRES A #6 PAN HEAD TYPE "B" SELF TAPPING PAN HEAD SCREW, 9.53 [.375] LONG.
- DIMENSIONS IN BRACKETS ARE IN INCHES.



SECTION A-A  
SCALE 10:1

**METRIC**

THIS DRAWING IS A CONTROLLED DOCUMENT FOR AMP INCORPORATED. IT IS SUBJECT TO CHANGE AND THE CONTROLLING ENGINEERING ORGANIZATION SHOULD BE CONTACTED FOR THE LATEST REVISION.



3-DIMENSIONAL MODEL  
NTS

BLACK	1-350373-9
BRICK RED	350373-1
COLOR	PART NO

DO NOT SCALE PRINT. UNLESS SPECIFIED DIMENSIONS IN mm [INCHES] TOLERANCES ON: 2 PLC DEC ± 0.13 [.005] 3 PLC DEC ± - ANGLES ± -		DR 5-3-93 K. SALMON CHK 5-3-93 R. SWING APPD - W. LONG AMPD - W. LONG PRODUCT SPEC -		NAME <b>AMP</b> AMP Incorporated Harrisburg, PA 17105-3608	
MATERIAL NYLON		FINISH COLOR, SEE TABLE		SIZE CAGE CODE 00779	DRAWING NO C=350373
		APPLICATION SPEC -		SCALE 4:1	SHEET 1 OF 1

CUSTOMER DRAWING

AMP 1471-6 REV 3-92  
03 MAY 1993 09:17:56 AMP23993 <CE0798>DEPT3323>AMP23993-U-WR93-46