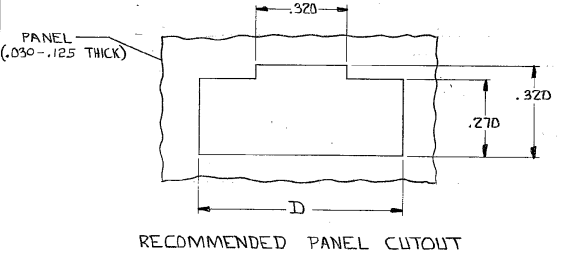
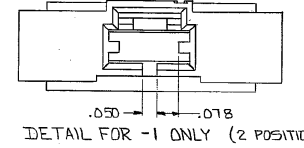
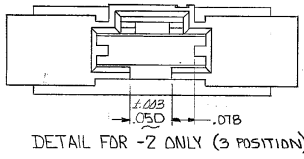
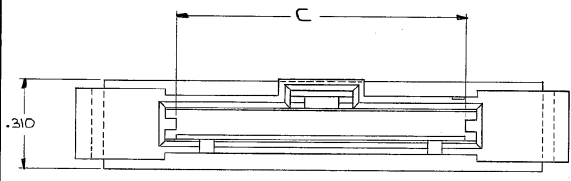
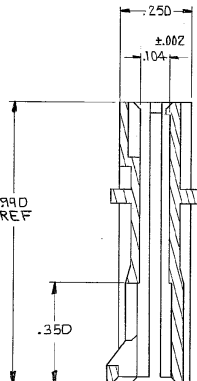
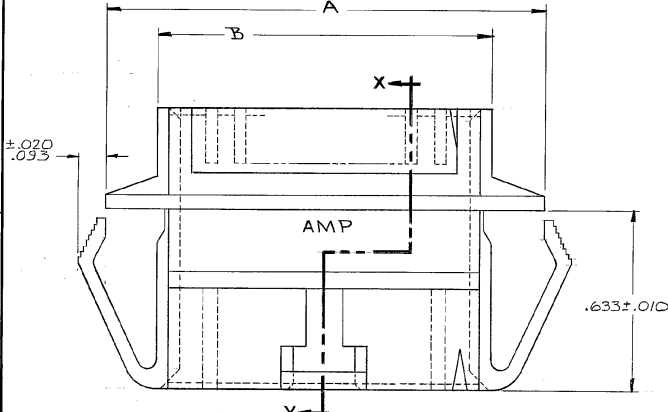


DRAWING MADE IN THIRD ANGLE PROJECTION

THIS DRAWING IS UNPUBLISHED. RELEASED FOR PUBLICATION  
 © Copyright 1985 BY AMP INCORPORATED, HARRISBURG, PA. ALL INTERNATIONAL RIGHTS RESERVED. AMP PRODUCTS MAY BE COVERED BY U.S. AND FOREIGN PATENTS AND/OR PATENTS PENDING.



REVISED PER ECO-10-000445		DATE	APPROVED
P	F	ZONE	LTR
0	0	RELEASED	5/23/85 JWW
1	A	REV ECM 952	5/23/85 JWW
2	B	REV ECMT 118	5/23/85 JWW
3	B	REV ECM 1635	5/23/85 JWW
4	C	REV LOC & DIST AD-4171	11-2-89 BE
5	D	OBS PER ECM 0831-93	8-93 RRG
6	E	REV PER 0010-1290-93	2-4-94 EB
7	F	REV PER 0010-0782-93	2-16-94
8	G	REV PER 0010-1388-93	2-16-94
9	G1	REVISED PER ECO-10-000445	2/28/99 HMR

- SHROUD ACCEPTS RIBBED PIN ASSEMBLIES
  - SHROUD MATES WITH LATCHING RECEPTACLE ASSEMBLIES
- ⚠ OBSOLETE PARTS: OBSOLETE CIS STREAMLINING PER D.RENAUD/D.SINISI

OB	2.925	2.505	2.665	3.035	25	2-103682-4
	2.825	2.405	2.565	2.935	24	2- - -3
OB	2.725	2.305	2.465	2.835	23	2- - -2
⚠	2.625	2.205	2.365	2.735	22	2- - -1
	2.525	2.105	2.265	2.635	21	2- - -0
	2.425	2.005	2.165	2.535	20	1- - -9
	2.325	1.905	2.065	2.435	19	1- - -8
OB	2.225	1.805	1.965	2.335	18	1- - -7
⚠	2.125	1.705	1.865	2.235	17	1- - -6
	2.025	1.605	1.765	2.135	16	1- - -5
OB	1.925	1.505	1.665	2.035	15	1- - -4
⚠	1.825	1.405	1.565	1.935	14	1- - -3
	1.725	1.305	1.465	1.835	13	1- - -2
	1.625	1.205	1.365	1.735	12	1- - -1
OB	1.525	1.105	1.265	1.635	11	1- - -0
⚠	1.425	1.005	1.165	1.535	10	- - -9
	1.325	.905	1.065	1.435	9	- - -8
	1.225	.805	.965	1.335	8	- - -7
	1.125	.705	.865	1.235	7	- - -6
	1.025	.605	.765	1.135	6	- - -5
	.925	.505	.665	1.035	5	- - -4
	.825	.405	.565	.935	4	- - -3
	.725	.305	.465	.835	3	- - -2
	.625	.205	.365	.735	2	- - -1

UNLESS OTHERWISE SPECIFIED DIMENSIONS ARE IN INCHES. TOLERANCES ON: DECIMALS ±.005 ANGLES ±.005	CONTRACT NO DR 5/23/85	AMP   AMP INCORPORATED Harrisburg, Pa. 17105	
MATERIAL BLACK THERMOPLASTIC	APPROVED 5/29/85	NAME SHROUD, PIN, PANEL MOUNT, AMPMODU MTE, SINGLE ROW, 100	
FINISH	DSGN APPD 5/29/85	SIZE C	FSCM NO 00779
	OTHER APPD	DRAWING NO 103682	SHEET

CUSTOMER DRAWING