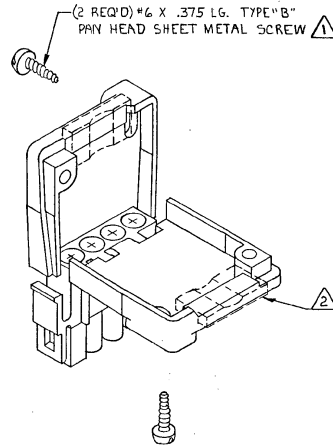
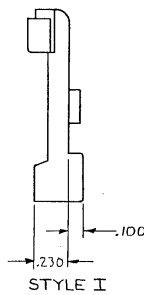
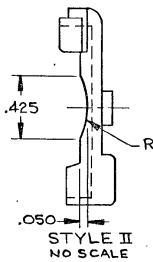
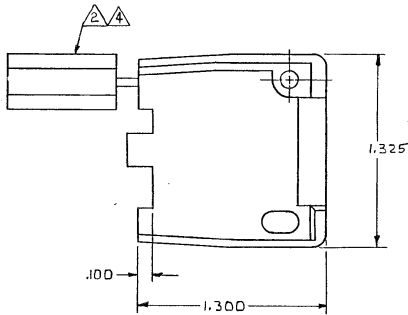
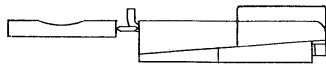


DRAWING MADE IN THIRD ANGLE PROJECTION

© COPYRIGHT 1981 BY AMP INCORPORATED, HARRISBURG, PA.
ALL INTERNATIONAL RIGHTS RESERVED. AMP INCORPORATED PRODUCTS
COVERED BY U. S. AND FOREIGN PATENTS AND/OR PATENTS PENDING.

- ⚠ SHEET METAL SCREWS NOT SUPPLIED.
 - ⚠ INSERT IS ATTACHED TO STRAIN RELIEF AS AN ADDITIONAL ADJUSTMENT FOR SMALL WIRE BUNDLES, IT SHOULD BE CUT OFF AND POSITIONED AS SHOWN BY DOTTED LINES.
 - ⚠ TWO REQUIRED PER CONNECTOR.
 - ⚠ STYLE II DOES NOT INCLUDE INSERT.
5. DETACHABLE INSERT MAY SEPARATE FROM STRAIN RELIEF BODY DURING SHIPPING.

REVISIONS					
P	F	ZONE/LTR	DESCRIPTION	DATE	APPROVED
		E	REV PER EC 0730-0201-94	4-26-85	JR RS



NYLON94V-0	II	641776-2
NYLON94V-0	I	641776-1
MATERIAL STYLE		PART NO

WIRE BUNDLE	
WITHOUT INSERT	MAX 4 @ .190 DIR
WITH INSERT	MIN 4 @ .040 DIR

UNLESS OTHERWISE SPECIFIED DIMENSIONS ARE IN INCHES. TOLERANCES ON: DECIMALS ± .015 ANGLES ±
MATERIAL SEE TABLE
COLOR SEE TABLE

CONTRACT NO	DR M FEHER 1-22-81
CHK	J.S. Heide 1/28/81
APPL	J.C. Mc-28 1-28-81
APPR	
DSGN APPD	
OTHER APPD	

AMP AMP INCORPORATED Harrisburg, Pa.	
NAME	STRAIN RELIEF AND INSERT, UNIVERSAL MATE-N-LOK™ 4-CIRCUIT
SIZE	CODE IDENT NO DRAWING NO
C	00779 641776
SCALE	2-1
SHEET 1 OF 1	

AMP 1471-6 REV 12-79

CUSTOMER DRAWING