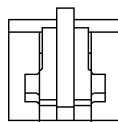
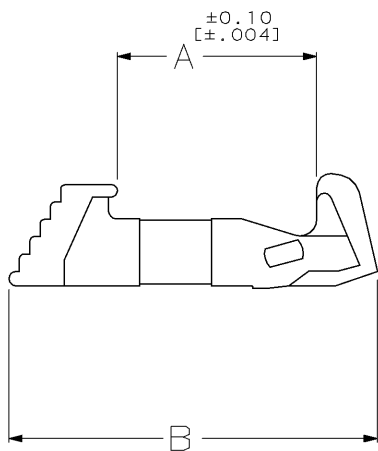
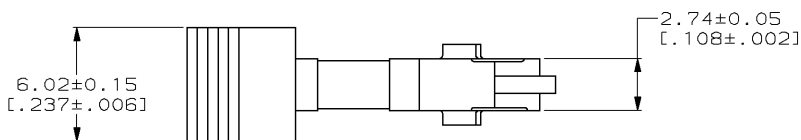


DRAWING MADE IN THIRD ANGLE PROJECTION

THIS DRAWING IS UNPUBLISHED. RELEASED FOR PUBLICATION, 19
 © COPYRIGHT 19 BY AMP INCORPORATED. ALL INTERNATIONAL RIGHTS RESERVED.

LOC	DIST	P	F	ZONE	LTR	REVISIONS	DESCRIPTION	DATE	APPD
AR	35					O	RELEASED TO CUST	3-6-90	-
						A	REVISED PER ECN BD3979	5-14-90	FMH
						B	REVISED PER ECN BD4722	2-25-91	FMH
						C	REV PER ECN BD4931	04/04/91	FMH
						D	REV PER EC 0020-2-93	02/18/93	FMH
						E	OBS -4 EC 0020-460-95	07 NOV 95	DK
						F	SUPSD -2 PER EC 0020-377-95	17 JAN 96	DK
						G	REACTIVATE -2 PER EC 0020-637-96	10 JUN 96	DLK



21.56 [.849]	12.62 [.497]	△ 111451-4
23.57 [.928]	14.63 [.576]	111451-3
20.98 [.826]	12.04 [.474]	111451-2
19.51 [.768]	10.57 [.416]	111451-1
B	A	PART NO

△ OBSOLETE PART NUMBER.

DO NOT SCALE PRINT. UNLESS SPECIFIED DIMENSIONS IN mm [INCHES] TOLERANCES ON: 2 PLC DEC ± 0.13(.005) 3 PLC DEC ± - ANGLES ± -		DR 3-6-90 C. OBERMAN	PART NO	
MATERIAL POLYESTER, BLACK	CHK 3-7-90 R. STONE	APPD 3-7-90 F. N. HEINEY	AMP INCORPORATED Harrisburg, Pa. 17105	
FINISH -	APPD 3-8-90 D. HOFFMAN	PRODUCT SPEC 108-1336	NAME EJECTOR LATCH, UNIV PIN CONN, AMP-LATCH™	
	APPLICATION SPEC 114-7011	SIZE B	CAGE CODE 00779	DRAWING NO 111451
	WEIGHT -	SCALE 5:1	SHEET 1 OF 1	

AMP 1470-15 REV 6-89

10-JUN-96 09:43:29 amp38585 /home/ssr/v026d/dsk01/dept4023/amp38585/edmod

CUSTOMER DRAWING